



Made in Germany since 1925

2.

Transport

Maximum safety in food transport – with the Rieber thermoport® system. The stackable thermoports® made of plastic and stainless steel can be cleverly combined and securely placed on transport or serving trolleys – for slip-resistant, stable, and hygienic transport.

Space-saving loading with GN containers or GN-thermoplates®, complemented by the waterproof plug lid or the vaculid® lid for vacuum-sealed storage – for optimal freshness and flexibility on the go.

thermoport® Premium stainless steel

Program Overview



thermoport® stainless steel Top loader portable - heated

Heated food transport box with insulated lid, self-regulating silicone foil heating fix +86°C max. +95°C, only wet heatable. Hygienic double-walled & tightly welded. For stacking GN containers/thermoplates® with watertight plug-in lids, for reliable & insulated food transport. All thermoport® models can be stacked in combination with each other. Rated voltage 1N AC 230V 50/60Hz.



Can be used directly as a scoop dispenser via the removable thermoport® lid. Transport & dispensing in one. Max. Capacity with GN: Size 100: 26L



thermoport® stainless steel Front loader mobile - unheated

Unheated food transport trolleys with insulated door, interior hygienic design H3. Hygienic double-walled & tightly welded. For insertion of GN containers/thermoplates® with watertight plug-in lid, for reliable & insulated food transport. All thermoport® models, plastic & stainless steel are stackable in combination. Optimally mobile with 2 fixed & 2 swivel stop castors, safely protected by 4 bumper corners.



Safe cold & hot holding with matching GN cooling/heating pellets. Max. Capacity with GN: Size 1000: 38L | 1400: 63.7L | 1600: 70.4L | 2000: 89.7L | 3000: 130L



thermoport® stainless steel Front loader mobile - convection heated

Circulating air heated food transport box with insulated door, digitally adjustable circulating air heating max. +100°C. Interior hygienic design H3. Hygienic double-walled & tightly welded. For insertion of GN containers/thermoplates® with watertight plug-in lid. All thermoport® plastic & stainless steel can be stacked together. Rated voltage 1N AC 230V 50/60Hz. Optimally mobile with 2 fixed & 2 swivel stop castors, safely protected by 4 bumper corners.



Precise to the degree, powerful digital convection heating, up to max. +100 °C. Max. Capacity with GN: Size 1000: 38L | 1400: 63.7L | 1600: 70.4L | 2000: 89.7L | 3000: 130L



hybrid kitchen - models 140 °C with lid | 200 °C thermoport® canteen

The special hybrid door with separately digitally controllable heaters & fans, max. 140°C. Functional programmes: Cold & hot holding simultaneously/separately, regeneration, cooking, with individually adjustable time, humidification, setpoint chamber/core temperature. Removable lid, with stacking embossing & seal. Interior H2 tightly welded, jointless support beads. Rated voltage 1N AC 230V 50Hz. Optimum mobility with 2 fixed & 2 swivel castors, safely protected by 4 bumper corners.



Auto prog. function can be stored for a 100% guarantee of success. Usable w/o high volt. curr. (230V), structural measures, extractor hood, water connections, etc.

Digital HACCP documentation - safe & time-saving

Digital documentation with our CHECK HACCP system. Automatic room temperature recording in the thermoport®, via retrofittable sensors. Paper- & seamless HACCP during transport, in real time, viewable from anywhere in your dashboard.



Automatic room temp. sensor - can be retrofitted any time - order no. 94020138



thermoport® stainless steel Front loader portable - unheated



Unheated food transport box with insulated door, interior hygienic design H3. Hygienic double-walled & tightly welded. For inserting GN containers/thermoplates® with watertight plug-in lid, for reliable & insulated food transport. All thermoport® models, plastic & stainless steel are stackable in combination.

+ Max. Capacity with GN: Size 1000: 38L

thermoport® stainless steel Front loader portable - convection heated



Circulating-air heated food transport box with insulated door, digitally adjustable circulating-air heating max. +90°C. Interior hygienic design H3. Hygienic double-walled & tightly welded. For inserting GN containers/thermoplates® with watertight plug-in lid. All thermoport® plastic & stainless steel can be stacked together. Rated voltage 1N AC 230V 50/60Hz.

+ Max. Capacity with GN: Size 1000: 38L

thermoport® stainless steel Front loader mobile - cooled



Refrigerated food transport trolley with insulated door and digitally controllable refrigerating machine, interior hygienic design H3. Double-walled & tightly welded. For inserting GN containers/thermoplates® with watertight plug-in lid. Thermoport® plastic & stainless steel can be stacked together. Rated voltage 1N AC 230V 50/60Hz. Optimum mobility, safely protected by 4 bumper corners.

+ Hygienic, as cooling meanders in the side walls, no germs in the interior. Max. Capacity with GN: Size 1000: 38L | 1600: 70.4L | 2000: 89.7L | 3000: 130L

thermoport® stainless steel Front loader mobile - hybrid



Hybrid food transport trolley with 2 insulated compartments, digital convection heating at the top, cooling compartment (active/passive) at the bottom. Interior hygienic design H3. Hygienic double-walled & tightly welded. For inserting GN containers/thermoplates® with watertight plug-in lid. Thermoport® plastic & stainless steel can be stacked together. Rated voltage 1N AC 230V 50/60Hz. Optimum mobility with 2 fixed & 2 swivel castors, safely protected by 4 bumper corners.

+ Auto prog. function can be stored for a 100% guarantee of success. Usable w/o high volt. curr. (230V), structural measures, extractor hood, water connections, etc.

thermoport® stainless steel Top loader portable - heated

Heated food transport box with insulated lid, self-regulating silicone foil heating fix +86°C max. +95°C, only wet heatable. Hygienic double-walled & tightly welded. For stacking GN containers/thermoplates® with watertight plug-in lids, for reliable & insulated food transport. All thermoport® models can be stacked in combination with each other. Rated voltage 1N AC 230V 50/60Hz.



More info



thermoport® CNS 105 heated

Connected load: 500 W | Plug type: Safety switch (type F) | Cable type: plain cable | Cable length: 200 mm | Ambient temperature: -20°C to +100°C

Dimensions mm	Capacity max. L	Weight kg	Function	Order no.
600 x 400 x 306	26	13,2	statically heated	85010302



thermoport® stainless steel Front loader mobile - unheated

Unheated food transport trolleys with insulated door, interior hygienic design H3. Hygienic double-walled & tightly welded. For insertion of GN containers/thermoplates® with watertight plug-in lid, for reliable & insulated food transport. All thermoport® models, plastic & stainless steel are stackable in combination. Optimally mobile with 2 fixed & 2 swivel stop castors, safely protected by 4 bumper corners.



More info



thermoport® CNS 1400 unheated

Jet-proof | support distance: 37 mm | ambient temperature: -20°C to +100°C | 2 fixed-; 2 swivel castors with brakes | Castor Ø: 75 mm | Max. Load capacity: 75 kg | 4 corner bumpers

Dimensions	Capacity	Weight	Support rails	Order no.
mm	max. L	kg		
492 x 769 x 793	64	39,0	14	85011101



thermoport® CNS 1600 unheated

Jet-proof | support distance: 37 mm | ambient temperature: -20°C to +100°C | 2 fixed-; 2 swivel castors | Castor Ø: 125 mm | Max. Load capacity: 150 kg | 4 corner bumpers

Dimensions	Capacity	Weight	Support rails	Order no.
mm	max. L	kg		
492 x 769 x 930	70	43,0	16	85010608



thermoport® CNS 2000 unheated

Jet-proof | support distance: 37 mm | ambient temperature: -20°C to +100°C | 2 fixed-; 2 swivel castors | Castor Ø: 125 mm | Max. Load capacity: 150 kg | 4 corner bumpers

Dimensions	Capacity	Weight	Support rails	Order no.
mm	max. L	kg		
492 x 769 x 1078	90	49,0	20	85010707



thermoport® CNS 3000 unheated

Jet-proof | support distance: 37 mm | ambient temperature: -20°C to +100°C | 2 fixed-; 2 swivel castors | Castor Ø: 125 mm | Max. Load capacity: 150 kg | 4 corner bumpers

Dimensions	Capacity	Weight	Support rails	Order no.
mm	max. L	kg		
592 x 769 x 1448	130	71,0	30	85010807



thermoport® stainless steel Front loader mobile - convection heated

Circulating air heated food transport box with insulated door, digitally adjustable circulating air heating max. +100°C. Interior hygienic design H3. Hygienic double-walled & tightly welded. For insertion of GN containers/thermoplates® with watertight plug-in lid. All thermoport® plastic & stainless steel can be stacked together. Rated voltage 1N AC 230V 50/60Hz. Optimally mobile with 2 fixed & 2 swivel stop castors, safely protected by 4 bumper corners.



More info



Thermoport® CNS 1400 circ.heated

Heating range: max. +95°C | Connected load: 765 W | Plug type: Safety switch (type F) | Cable type: spiral cable | Cable length: 1500 mm | Protection class: IPX5 | Suitable for water jets (if heating element removed) | Support distance: 37 mm | Ambient temperature: -20°C to +100°C | 2 fixed-; 2 swivel castors with brakes | Castor Ø: 75 mm | Max. Load capacity: 75 kg | 4 corner bumpers

Dimensions mm	Capacity max. L	Weight kg	Support rails	Order no.
492 x 769 x 793	64	42,0	14	85011102



thermoport® CNS 1600 circulating heated

Heating range: max. +95°C | Connected load: 763 W | Plug type: Safety switch (type F) | Cable type: spiral cable | Cable length: 1500 mm | Protection class: IPX5 | Suitable for water jets (if heating element removed) | Support distance: 37 mm | Ambient temperature: -20°C to +100°C | 2 fixed-; 2 swivel castors | Castor Ø: 125 mm | Max. Load capacity: 150 kg | 4 corner bumpers

Dimensions mm	Capacity max. L	Weight kg	Support rails	Order no.
492 x 769 x 930	70	46,0	16	85010609



thermoport® CNS 1600-D circ.heated

Heating range: max. +95°C | Connected load: 763 W | Plug type: Safety switch (type F) | Cable type: plain cable | Cable length: 1500 mm | Protection class: IPX5 | Suitable for water jets (if heating element removed) | Support distance: 37 mm | Ambient temperature: -20°C to +100°C | 2 fixed-; 2 swivel castors | Castor Ø: 125 mm | Max. Load capacity: 150 kg | 4 corner bumpers

Dimensions mm	Capacity max. L	Weight kg	Support rails	Order no.
492 x 769 x 963	78	40,4	16	85010903

thermoport® CNS 2000 circulating heat

Heating range: max. +95°C | Connected load: 763 W | Plug type: Safety switch (type F) | Cable type: spiral cable | Cable length: 1500 mm | Protection class: IPX5 | Suitable for water jets (if heating element removed) | Support distance: 37 mm | Ambient temperature: -20°C to +100°C | 2 fixed-; 2 swivel castors | Castor Ø: 125 mm | Max. Load capacity: 150 kg | 4 corner bumpers



Dimensions	Capacity	Weight	Support rails	Order no.
mm	max. L	kg		
492 x 769 x 1078	90	52,0	20	85010708

thermoport® CNS 3000 circulating heat

Heating range: max. +95°C | Connected load: 763 W | Plug type: Safety switch (type F) | Cable type: spiral cable | Cable length: 1500 mm | Protection class: IPX5 | Suitable for water jets (if heating element removed) | Support distance: 37 mm | Ambient temperature: -20°C to +100°C | 2 fixed-; 2 swivel castors | Castor Ø: 125 mm | Max. Load capacity: 150 kg | 4 corner bumpers



Dimensions	Capacity	Weight	Support rails	Order no.
mm	max. L	kg		
592 x 769 x 1448	130	73,0	30	85010808



hybrid kitchen - models 140 °C with lid | 200 °C thermoport® canteen

The special hybrid door with separately digitally controllable heaters & fans, max. 140°C. Functional programmes: Cold & hot holding simultaneously/ separately, regeneration, cooking, with individually adjustable time, humidification, setpoint chamber/core temperature. Removable lid, with stacking embossing & seal. Interior H2 tightly welded, jointless support beads. Rated voltage 1N AC 230V 50Hz. Optimum mobility with 2 fixed & 2 swivel castors, safely protected by 4 bumper corners.



More info



hybrid kitchen 140°C-D mobile

Plug type: Safety switch (type F) | Cable type: spiral cable | Cable length: 1500 mm | Protection class: IPX4 | Support beads: 16 | Support distance: 37 mm | Ambient temperature: +5°C to +40°C

Dimensions	Connected load	Weight	Order no.
mm	W	kg	
592 x 769 x 963	3.300	55,0	85010904



hybrid kitchen 140°C built-in

Plug type: Safety switch (type F) | Cable type: spiral cable | Cable length: 1500 mm | Protection class: IPX5 | Support beads: 16 | Support distance: 37 mm | Ambient temperature: +5°C to +40°C

Dimensions	Connected load	Weight	Order no.
mm	W	kg	
584 x 715 x 745	3.300	61,0	85010906



hybrid kitchen 200°C mobile

Plug type: Safety switch (type F) | Cable type: spiral cable | Cable length: 1500 mm | Protection class: IPX4 | Support beads: 16 | Support distance: 37 mm | Ambient temperature: +5°C to +40°C

Dimensions	Connected load	Weight	Order no.
mm	W	kg	
662 x 870 x 981	3.300	67,5	85010911



hybrid kitchen 200°C built-in

Plug type: Safety switch (type F) | Cable type: spiral cable | Cable length: 1500 mm | Protection class: IPX5 | Support beads: 16 | Support distance: 37 mm | Ambient temperature: +5°C to +40°C

Dimensions	Connected load	Weight	Order no.
mm	W	kg	
594 x 834 x 810	3.300	61,0	85010912

thermoport® canteen

Support beads: 16 | Support distance: 37 mm | Ambient temperature: -20°C to +100°C

Dimensions	Connected load	Weight	Order no.
mm	W	kg	
592 x 788 x 959	-	44,0	85010917



thermoport® canteen (100°C)

Plug type: Safety switch (type F) | Cable type: spiral cable | Cable length: 1500 mm | Protection class: IPX5 | Support beads: 16 | Support distance: 37 mm | Ambient temperature: -20°C to +140°C

Dimensions	Connected load	Weight	Order no.
mm	W	kg	
592 x 788 x 959	763	47,1	85010918



thermoport® canteen (hybrid 140°C)

Plug type: Safety switch (type F) | Cable type: spiral cable | Cable length: 1500 mm | Protection class: IPX5 | Support beads: 16 | Support distance: 37 mm | Ambient temperature:

Dimensions	Connected load	Weight	Order no.
mm	W	kg	
592 x 788 x 959	3.300	56,8	85010919



thermoport® stainless steel Front loader portable - unheated

Unheated food transport box with insulated door, interior hygienic design H3. Hygienic double-walled & tightly welded. For inserting GN containers/ thermoplates® with watertight plug-in lid, for reliable & insulated food transport. All thermoport® models, plastic & stainless steel are stackable in combination.



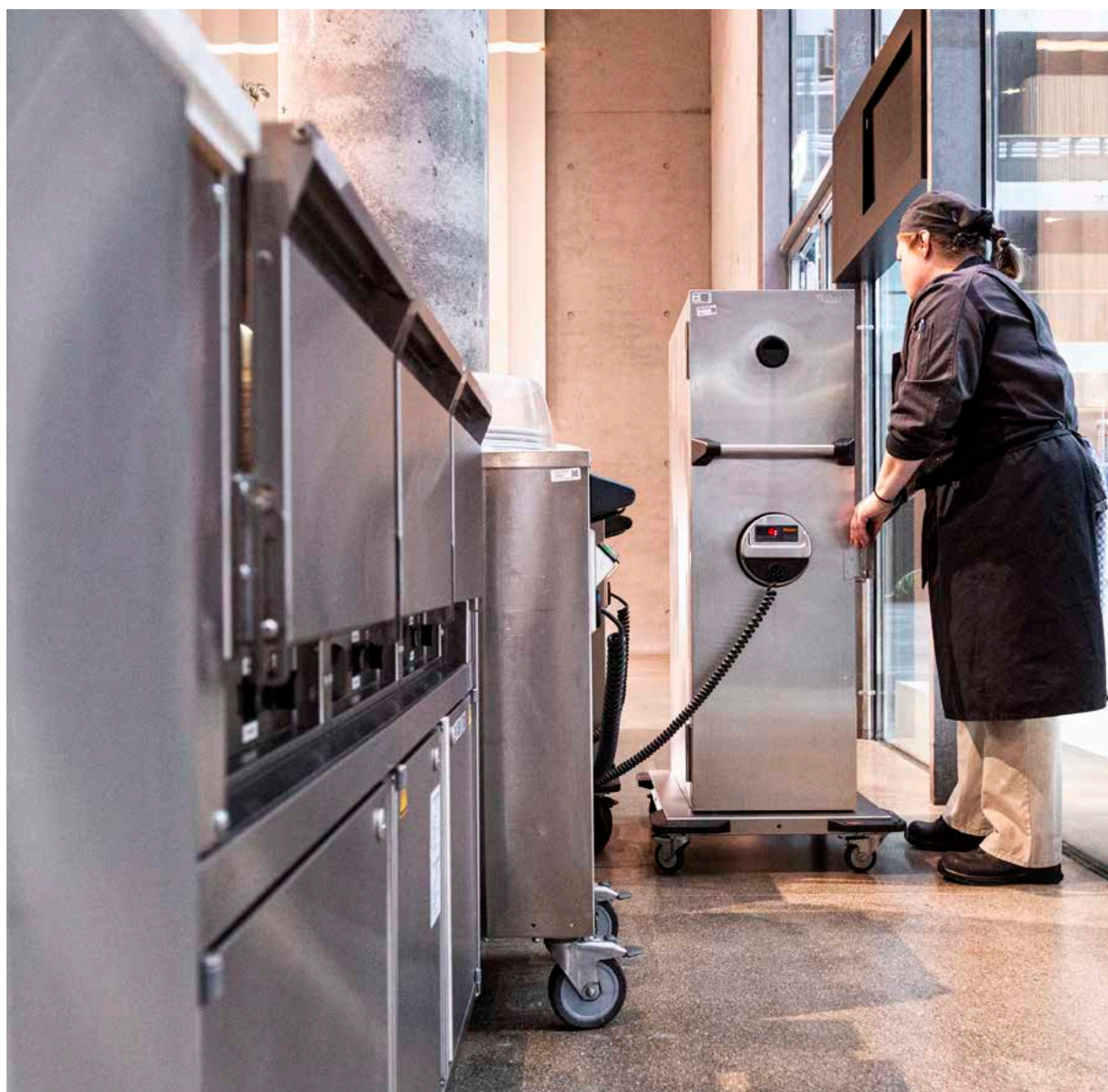
More info

thermoport® CNS 1000 unheated

Support distance: 36 mm | Ambient temperature: -20°C to +100°C



Dimensions mm	Capacity max. L	Weight kg	Support rails	Order no.
410 x 665 x 470	38	19,0	8	85010404



thermoport® stainless steel Front loader portable - convection heated

Circulating-air heated food transport box with insulated door, digitally adjustable circulating-air heating max. +90°C. Interior hygienic design H3. Hygienic double-walled & tightly welded. For inserting GN containers/ thermoplates® with watertight plug-in lid. All thermoport® plastic & stainless steel can be stacked together. Rated voltage 1N AC 230V 50/60Hz.



More info



thermoport® CNS 1000 circulating heat

Connected load: 810 W | Plug type: Safety switch (type F) | Cable type: spiral cable | Cable length: 1500 mm | Protection class: IPX5 | Support distance: 36 mm | Ambient temperature: -20°C to +100°C

Dimensions	Capacity	Weight	Support rails	Order no.
mm	max. L	kg		
410 x 655 x 470	38	23,0	8	85010405



thermoport® CNS 1000-D circulating heat

Connected load: 810 W | Plug type: Safety switch (type F) | Cable type: spiral cable | Cable length: 1500 mm | Protection class: IPX3 | Support distance: 55 mm | Ambient temperature: -20°C to +100°C

Dimensions	Capacity	Weight	Support rails	Order no.
mm	max. L	kg		
410 x 645 x 530	52	30,0	7	85010503



thermoport® stainless steel Front loader mobile - cooled

Refrigerated food transport trolley with insulated door and digitally controllable refrigerating machine, interior hygienic design H3. Double-walled & tightly welded. For inserting GN containers/thermoplates® with watertight plug-in lid. Thermoport® plastic & stainless steel can be stacked together. Rated voltage 1N AC 230V 50/60Hz. Optimum mobility, safely protected by 4 bumper corners.



More info



thermoport® s/s 1000 refrigerated R290

Connected load: 250 W | Cooling range: +2°C to +10°C | Weight: 45 kg | Plug type: Safety switch (type F) | Cable type: spiral cable | Cable length: 2000 mm | Protection class: IPX3 | Hygienic design: H3 | Splashproof | Support distance: 37 mm | 4 swivel castors with brakes | Cator Ø: 75 mm | Max. Load capacity: 75 kg | 4 corner bumpers

Dimensions mm	Capacity max. L	Support rails	Refrigerant	Order no.
492 x 769 x 770	44	8	R290	85010411



thermoport® s/s 1600 refrigerated R290

Connected load: 265 W | Cooling range: +2°C to +8°C | Weight: 62 kg | Plug type: Safety switch (type F) | Cable type: spiral cable | Cable length: 2000 mm | Protection class: IPX3 | Hygienic design: H3 | Splashproof | Support distance: 37 mm | 2 fixed-; 2 swivel castors | Cator Ø: 125 mm | Max. Load capacity: 62 kg | 4 corner bumpers

Dimensions mm	Capacity max. L	Support rails	Refrigerant	Order no.
492 x 769 x 1130	70	16	R290	85010616



thermoport® s/s 2000 refrigerated R290

Connected load: 265 W | Cooling range: +2°C to +8°C | Weight: 67 kg | Plug type: Safety switch (type F) | Cable type: spiral cable | Cable length: 2000 mm | Protection class: IPX3 | Hygienic design: H3 | Splashproof | Support distance: 37 mm | 2 fixed-; 2 swivel castors | Cator Ø: 125 mm | Max. Load capacity: 85 kg | 4 corner bumpers

Dimensions mm	Capacity max. L	Support rails	Refrigerant	Order no.
492 x 769 x 1276	90	20	R290	85010718



thermoport® s/s 3000 refrigerated R290

Connected load: 265 W | Cooling range: +2°C to +8°C | Weight: 85 kg | Plug type: Safety switch (type F) | Cable type: spiral cable | Cable length: 2000 mm | Protection class: IPX3 | Hygienic design: H3 | Splashproof | Support distance: 37 mm | 2 fixed-; 2 swivel castors | Cator Ø: 125 mm | Max. Load capacity: 130 kg | 4 corner bumpers

Dimensions mm	Capacity max. L	Support rails	Refrigerant	Order no.
492 x 769 x 1646	130	30	R290	85010820

thermoport® stainless steel Front loader mobile - hybrid

Hybrid food transport trolley with 2 insulated compartments, digital convection heating at the top, cooling compartment (active/passive) at the bottom. Interior hygienic design H3. Hygienic double-walled & tightly welded. For inserting GN containers/thermoplates® with watertight plug-in lid. Thermoport® plastic & stainless steel can be stacked together. Rated voltage 1N AC 230V 50/60Hz. Optimum mobility with 2 fixed & 2 swivel castors, safely protected by 4 bumper corners.



More info



thermoport® CNS 3000 hybrid ak-W & pa-K

Connected load: 763 W | Plug type: Safety switch (type F) | Cable type: plain cable | Cable length: 1500 mm | Protection type: IPX4 | Hygienic design: H3 | Suitable for water jets (if heating element removed) | Support distance: 37 mm | Ambient temperature: +2°C to +100°C | 2 fixed-; 2 swivel castors | Castor Ø: 125 mm | Max. Load capacity: 150 kg | 4 corner bumpers

Dimensions mm	Capacity max. L	Weight kg	Support rails	Order no.
592 x 769 x 1448	114	66,0	16 (warm), 8 (neutral)	85010816



thermoport® 3000 hybr.hot/cold act. R290

Connected load: 834 W | Plug type: Safety switch (type F) | Cable type: plain cable | Cable length: 2000 mm | Protection type: IPX4 | Hygienic design: H3 | Suitable for water jets (if heating element removed) | Support distance: 37 mm | Ambient temperature: +2°C to +100°C | 2 fixed-; 2 swivel castors | Castor Ø: 125 mm | Max. Load capacity: 150 kg | 4 corner bumpers

Dimensions mm	Capacity max. L	Weight kg	Support rails	Order no.
492 x 769 x 1645	114	78,0	16 (warm), 8 (cold)	85010823



hybrid kitchen & thermoport® can- teen Accessories

Suitable accessories for all hybrid kitchen models - for safe and shock-protected transport, the transport box made of sturdy wood for retracting the hybrid kitchen or the stainless steel GN cooling or heating pellets for additional passive cold / hot holding for sliding onto the support ledges.



More info



Protective screen front thermop. canteen

Accessory set for the thermoport® canteen consisting of an acrylic glass panel with glass mounts and hinges. Easy to install at the existing fold-out shelf mounting points. For the safe serving of food.

Weight

kg

9,2

Order no.

[85011718](#)



Door thermoport® canteen (100°C)

A perfect option for the thermoport® canteen is the thermoport® canteen 100°C heatable door with active circulating air heating. Suitable for actively keeping food hot. Easy to mount. Additional cooling option is possible with the insertion of GN 1/1 cooling pellets; the cold air is distributed evenly in the interior in pure circulating air mode.

Weight

kg

8,7

Order no.

[85011720](#)



Door thermoport® canteen (hybrid 140°C)

A perfect option for the thermoport® canteen is the heatable thermoport® canteen Hybrid 140°C door. For mobile and fully functional regeneration/preparation, with 2 separate, digitally controllable circulating air heating systems, a choice of programs for keeping food cold and hot at the same time or separately, as well as for regenerating and cooking food. In addition, a refrigeration function through the pure circulating air program and with the insertion of GN 1/1 cooling pellets.

Weight

kg

18,8

Order no.

[85011721](#)



Door thermoport® canteen (unheated)

Weight

kg

6,0

Order no.

[85011719](#)

GN cooling pellet CNS 1/1 - 12,5mm

Stainless steel GN 1/1 cooling plate for pre-heating and passive cooling during the transportation of food in Rieber thermoport® models, can be inserted horizontally on the support rails.

Weight

kg

3,2

Order no.

[85012015](#)

GN cooling pellet CNS 1/1 - 30mm

Stainless steel GN 1/1 cooling plate for pre-heating and passive cooling during the transportation of food in Rieber thermoport® models, can be inserted horizontally on the support rails.

Weight

kg

5,6

Order no.

[85012002](#)



Transport-Box - hybrid kitchen

Weight

kg

63,0

Order no.

[85011717](#)



thermoport® stainless steel Accessories

Matching accessories for all thermoport® stainless steel models - such as slide-in frames for various smaller GN container sizes, stainless steel GN cooling or heating pellets for passive cold / warm holding, up to the transport protection with all-round gallery so that further thermoport® models can be stacked without slipping or the chassis for portable stainless steel thermoport® models. Can also be extended with all-round impact protection for robust protection.



More info



Insert frame - 1/6, 1/9

Stainless steel GN 1/1 insert frame with 2 cross supports - for the insertion of smaller GN sizes, such as 6x 1/6 or 9x 1/9.

Weight

kg

0,7

Order no.

[85012010](#)



Insert frame - 1/4, 1/6, 2/4

Stainless steel GN 1/1 insert frame with 1 longitudinal supports - for the insertion of smaller GN sizes, such as 4x 1/4, 6x 1/6 or 2x 2/4.

Weight

kg

0,5

Order no.

[85012009](#)

Chassis - thermoport® stainless steel

Stainless steel mobile frame with 4 corner bumpers, 2 swivel castors with brakes and 2 fixed castors for the transport of portable plastic thermoport® models.

Weight

kg

7,7

Order no.

[88140107](#)



gallery with locking device

All-round gallery for extending the attachable lorry transport securing system on all stainless steel thermoport® models, for non-slip transport of stacked thermoports and for optimum impact protection.

Weight

kg

1,8

Order no.

[85100202](#)

All-round bumper - thermoport®3000

Weight

kg

2,3

Order no.

[85012054](#)

All-round bumper - TH 1400, 1600, 2000

Weight

kg

2,2

Order no.

[85012055](#)

Transp.secur.device - thermoport® CNS

Truck transport protection for placing on all stainless steel thermoport® models, for optimum impact protection - can be extended with all-round gallery for non-slip transport of stacked thermoports.

Weight

kg

5,2

Order no.

[85012053](#)



GN cooling pellet CNS 1/1 - 30mm

Stainless steel GN 1/1 cooling plate for pre-heating and passive cooling during the transportation of food in Rieber thermoport® models, can be inserted horizontally on the support rails.

Weight

kg

5,6

Order no.

[85012002](#)



GN cooling pellet CNS 1/1 - 12,5mm

Stainless steel GN 1/1 cooling plate for pre-heating and passive cooling during the transportation of food in Rieber thermoport® models, can be inserted horizontally on the support rails.

Weight

kg

3,2

Order no.

[85012015](#)

Heating pellet CNS GN 1/1

The stainless steel heating plate GN 1/1 for pre-tempering and passive keeping warm via the food transport in Rieber thermoport® models can be inserted horizontally via the support ledges.

Weight

kg

2,9

Order no.

[89080172](#)



thermoport® Plastic

Program Overview



thermoport® plastic Top loader portable - unheated / passively cooled

Unheated food transport box with lid, made of sturdy, lightweight & non-porous plastic. Hygienic double-walled & tightly welded, dishwasher-safe (up to +90°C). For stacking GN containers/thermoplates® with watertight plug-in lid, for reliable & insulated food transport. All thermoport® models, plastic & stainless steel can be stacked in combination. Passively cooled version with GN 1/1 cooling plate made of plastic integrated in the lid.



Easy to clean, dishwasher safe up to +90 °C. Max. Capacity with GN: Size 50: 11, 7L | 100: 26L



thermoport® plastic Top loader portable - heated

Heated food transport box with lid & self-regulating PTC heating fix +86°C max. +95°C, wet & dry heatable, hygienic double-walled & seal-welded. For stacking GN containers/thermoplates® with watertight plug-in lids, for reliable & insulated food transport. All thermoport® models can be stacked in combination with each other. Rated voltage 1N AC 230V 50/60Hz.



Easy to clean, dishwasher safe up to +90 °C without heating. Max. Capacity with GN: Size 50: 11, 7L | 100: 26L



thermoport® plastic Top loader portable - unheated with hybrid function

Unheated food transport box with lid & passive cold/warm area separable by Isosteg. Made of sturdy, lightweight & non-porous plastic. Hygienically double-walled & tightly welded. For space-efficient stacking of GN containers/thermoplates® with watertight plug-in lid. All thermoport® models can be stacked in combination with each other.



Separable interior in hot & cold, efficient GN stacking in various sizes/depths. Sizes/depths. Dishwasher safe up to +90 °C. Max. Max. capacity with GN: Size 100: 26L



thermoport® plastic Front loader portable - unheated

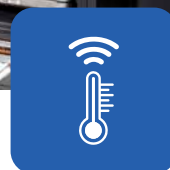
Unheated food transport box with door, made of sturdy, lightweight & non-porous plastic. Hygienically double-walled & tightly welded. For inserting GN containers/thermoplates® with watertight plug-in lid, for reliable & insulated food transport. All thermoport® models, plastic & stainless steel can be stacked in combination.



Easy to clean, dishwasher safe up to +90 °C. Max. Capacity with GN: Size 230: 26L | 500: 26L | 600: 33L | 1000: 52L | 6000: 104L

Digital HACCP documentation - safe & time-saving

Digital documentation with our CHECK HACCP system. Automatic room temperature recording in the thermoport®, via retrofittable sensors. Paper- & seamless HACCP during transport, in real time, viewable from anywhere in your dashboard.



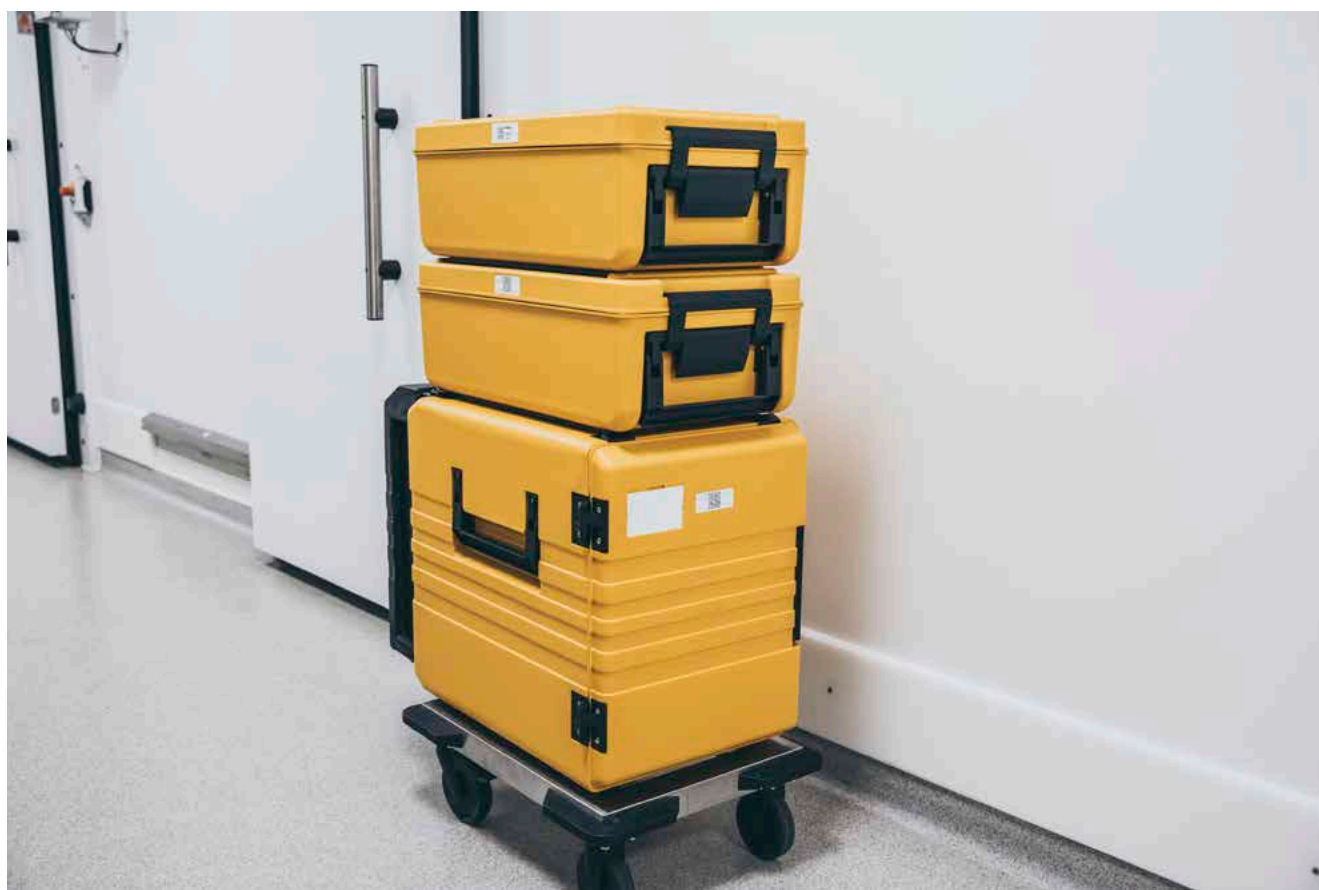
Automatic room temp. sensor - can be retrofitted any time - order no. 94020138



thermoport® plastic Front loader portable - convection heated

Circulating-air heated food transport box with door, digital temperature setting accurate to the degree from +20°C to +85°C. Hygienic double-walled & tightly welded, dishwasher-safe without heating (up to +90°C). For inserting GN containers/thermoplates® with watertight plug-in lid. All thermoport® synthetic & stainless steel containers & stainless steel can be stacked in combination. Rated voltage 1N AC 230V 50/60Hz.

**+ Easy cleaning, dishwasher safe up to +90 °C without heating. Max. Capacity with GN:
Size 600: 33L | 1000: 52L | 6000: 104L**



thermoport® plastic Top loader portable - unheated / passively cooled

Unheated food transport box with lid, made of sturdy, lightweight & non-porous plastic. Hygienic double-walled & tightly welded, dishwasher-safe (up to +90°C). For stacking GN containers/thermoplates® with watertight plug-in lid, for reliable & insulated food transport. All thermoport® models, plastic & stainless steel can be stacked in combination. Passively cooled version with GN 1/1 cooling plate made of plastic integrated in the lid.



More info

thermoport® K 50 neutral

Max. capacity 11,7 L | Ambient temperature: -20°C to +100°C | Weight: 6,5 kg



Dimensions mm	Function	Colour	Order no.
645 x 370 x 240	neutral	orange	85020201
645 x 370 x 240	neutral	black	85020216

thermoport® K 100 unheated

Max. capacity 26 L | Ambient temperature: -20°C to +100°C | Weight: 7,5 kg



Dimensions mm	Function	Colour	Order no.
645 x 370 x 308	neutral	orange	85020301
645 x 370 x 308	neutral	black	85020328
645 x 370 x 334	passive cooled	orange	85020346
645 x 370 x 334	passive cooled	black	85020347



thermoport® plastic

Top loader portable - heated

Heated food transport box with lid & self-regulating PTC heating fix +86°C max. +95°C, wet & dry heatable, hygienic double-walled & seal-welded. For stacking GN containers/thermoplates® with watertight plug-in lids, for reliable & insulated food transport. All thermoport® models can be stacked in combination with each other. Rated voltage 1N AC 230V 50/60Hz.



More info



thermoport® K 50 heated

Connected load: 240 W | Plug type: Safety switch (type F) | Cable type: plain cable | Cable length: 2000 mm | Protection class: IPX4 | Suitable for water jets (if heating element removed) | Ambient temperature: -20°C to +100°C

Dimensions	Capacity	Weight	Colour	Order no.
mm	max. L	kg		
645 x 370 x 240	12	7,5	orange	85020206



thermoport® K 100 heated

Connected load: 240 W | Plug type: Safety switch (type F) | Cable type: plain cable | Cable length: 2000 mm | Protection class: IPX4 | Suitable for water jets (if heating element removed) | Ambient temperature: -20°C to +100°C

Dimensions	Capacity	Weight	Colour	Order no.
mm	max. L	kg		
645 x 370 x 308	26	8,3	orange	85020313
645 x 370 x 308	26	8,3	black	85020329



thermoport® plastic Top loader portable - unheated with hybrid function

Unheated food transport box with lid & passive cold/warm area separable by Isosteg. Made of sturdy, lightweight & non-porous plastic. Hygienically double-walled & tightly welded. For space-efficient stacking of GN containers/thermoplates® with watertight plug-in lid. All thermoport® models can be stacked in combination with each other.



More info

thermoport® K 100 hybrid passive

Ambient temperature: -20°C to +100°C | Dishwasher safe up to +90 ° C



Dimensions mm	Capacity max. L	Weight kg	Colour	Order no.
700 x 425 x 368	26	7,3	orange	85020353
700 x 425 x 368	26	7,3	black	85020354



thermoport® plastic Front loader portable - unheated

Unheated food transport box with door, made of sturdy, lightweight & non-porous plastic. Hygienically double-walled & tightly welded. For inserting GN containers/thermoplates® with watertight plug-in lid, for reliable & insulated food transport. All thermoport® models, plastic & stainless steel can be stacked in combination.



More info



thermoport® K 600 unheated

Support distance: 36 mm | Ambient temperature: -20°C to +100°C | Dishwasher safe up to +90 ° C

Dimensions mm	Capacity max. L	Weight kg	Support rails	Colour	Order no.
610 x 435 x 385	33	8,2	7	orange	85020505
610 x 435 x 385	33	8,2	7	black	85020518



thermoport® K 1000 unheated

Support distance: 36 mm | Ambient temperature: -20°C to +100°C | Dishwasher safe up to +90 ° C

Dimensions mm	Capacity max. L	Weight kg	Support rails	Colour	Order no.
610 x 435 x 561	52	12,0	12	orange	85020401
610 x 435 x 561	52	12,0	12	black	85020412



thermoport® K 6000 unheated

Support distance: 36 mm | Ambient temperature: -20°C to +100°C | Dishwasher safe up to +90 ° C

Dimensions mm	Capacity max. L	Weight kg	Support rails	Colour	Order no.
779 x 644 x 562	104	20,5	12	orange	85020801



thermoport® plastic Front loader portable - convection heated

Circulating-air heated food transport box with door, digital temperature setting accurate to the degree from +20°C to +85°C. Hygienic double-walled & tightly welded, dishwasher-safe without heating (up to +90°C). For inserting GN containers/thermoplates® with watertight plug-in lid. All thermoport® synthetic & stainless steel containers & stainless steel can be stacked in combination. Rated voltage 1N AC 230V 50/60Hz.



More info



thermoport® K 600 KB D heated

Heating control: digital | Connected load: 500 W | Plug type: Safety switch (type F) | Cable type: plain cable | Cable length: 2000 mm | Protection class: IPX4 | Support distance: 36 mm | Ambient temperature: -20°C to +100°C

Dimensions mm	Capacity max. L	Weight kg	Support rails	Colour	Order no.
435 x 639 x 385	33	10,7	7	orange	85020526
435 x 639 x 385	33	10,7	7	black	85020527



thermoport® K 600 KB A heated

Heating control: analogue | Connected load: 500 W | Plug type: Safety switch (type F) | Cable type: plain cable | Cable length: 2000 mm | Protection class: IPX4 | Support distance: 36 mm | Ambient temperature: -20°C to +100°C

Dimensions mm	Capacity max. L	Weight kg	Support rails	Colour	Order no.
435 x 639 x 385	33	10,7	7	orange	85020524
435 x 639 x 385	33	10,7	7	black	85020525



thermoport® K 1000 circul.heated

Heating control: digital | Connected load: 810 W | Plug type: Safety switch (type F) | Cable type: plain cable | Cable length: 2000 mm | Protection class: IPX4 | Support distance: 36 mm | Ambient temperature: -20°C to +100°C

Dimensions mm	Capacity max. L	Weight kg	Support rails	Colour	Order no.
688 x 435 x 561	52	17,6	12	orange	85020423
688 x 435 x 561	52	17,6	12	black	85020424



thermoport® K 1000 KB D heated

Heating control: digital | Connected load: 500 W | Plug type: Safety switch (type F) | Cable type: plain cable | Cable length: 2000 mm | Protection class: IPX5 | Support distance: 36 mm | Ambient temperature: -20°C to +100°C

Dimensions mm	Capacity max. L	Weight kg	Support rails	Colour	Order no.
435 x 634 x 561	52	14,8	12	orange	85020436
435 x 634 x 561	52	14,8	12	black	85020437

thermoport® K 1000 KB A heated

Heating control: analogue | Connected load: 500 W | Plug type: Safety switch (type F) | Cable type: plain cable | Cable length: 2000 mm | Protection class: IPX4 | Support distance: 36 mm | Ambient temperature: -20°C to +100°C



Dimensions mm	Capacity max. L	Weight kg	Support rails	Colour	Order no.
435 x 634 x 561	52	14,8	12	orange	85020434
435 x 634 x 561	52	14,8	12	black	85020435



thermoport® plastic Accessories

Matching accessories for all thermoport® plastic models - such as slide-in frames for various smaller GN container sizes, synthetic GN cooling or heating pellets for passive cold / warm holding, through to the chassis and rolliport for non-slip transport of all thermoport® models.



More info



Insert frame - 1/6, 1/9

Stainless steel GN 1/1 insert frame with 2 cross supports - for the insertion of smaller GN sizes, such as 6x 1/6 or 9x 1/9.

Weight

kg

0,7

Order no.

[85012010](#)



Insert frame - 1/4, 1/6, 2/4

Stainless steel GN 1/1 insert frame with 1 longitudinal supports - for the insertion of smaller GN sizes, such as 4x 1/4, 6x 1/6 or 2x 2/4.

Weight

kg

0,5

Order no.

[85012009](#)



Chassis - thermoport® plastic

Stainless steel mobile frame with 4 corner bumpers, 2 swivel stop and 2 fixed castors Ø125mm for the transportation of portable plastic thermoport® models.

Weight

kg

5,2

Order no.

[88140106](#)



Mobile frame - thermoport® K 1000

Mobile frame with a stainless steel plate and stainless steel castors for fixed mounting on the thermoport® K 1000.

Weight

kg

6,3

Order no.

[88140105](#)



GN bridge piece - thermoport® 50K/100K

Cross support without a spring for dividing thermoport® 50/100K - to accommodate smaller GN sizes.

Weight

kg

0,1

Order no.

[84190202](#)

ISO divider 1/1 - TH K 1000 - black

Plastic insulated divider in a GN size for the insulated separation of a cold and hot zone - when transporting food in the thermoport® K 1000.

Weight

kg

1,1

Order no.

[85022069](#)

Insulated divider plastic - orange

Plastic insulated divider - for the thermal separation of a cold and hot zone in plastic thermoports.

Weight

kg

1,1

Order no.

[85022012](#)

Iso divider - thermoport® K 100.

Plastic insulated drawer for the insulated separation of a cold and hot zone - when transporting food in the thermoport® K 100.

Weight

kg

1,6

Order no.

[85022042](#)

Trolley - thermoport® K 6000

Suitable transport trolley for the plastic thermoport® 6000.

Weight

kg

11,3

Order no.

[88140201](#)



Rolliport plastic - thermoport® K

The universal transport trolley for all portable thermoport® models without castors.

Weight

kg

8,6

Order no.

[88070601](#)



Stacking catch - thermoport® K 1000

Stack locking mechanism for mounting on the base of the plastic thermoport® 1000 - for the safe and non-slip stacking of boxes.

Weight

kg

1,0

Order no.

[85022061](#)



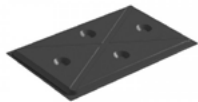
Plug for heating TP 50KB/100KB



Weight	Order no.
kg	
0,0	37130841

GN cooling pellet 1/1 plastic - black

Plastic GN 1/1 cooling plate for pre-heating and passive cooling during the transportation of food in Rieber thermoport® models, can be inserted horizontally on the support rails.



Weight	Order no.
kg	
2,7	85022067

GN cooling pellet plastic 1/1 - orange

Plastic GN 1/1 cooling plate for pre-heating and passive cooling during the transportation of food in Rieber thermoport® models, can be inserted horizontally on the support rails.



Weight	Order no.
kg	
2,6	85022038

Heating pellet CNS GN 1/1

The stainless steel heating plate GN 1/1 for pre-tempering and passive keeping warm via the food transport in Rieber thermoport® models can be inserted horizontally via the support ledges.



Weight	Order no.
kg	
2,9	89080172

Heating pellet CNS GN 1/2 - asymmetrical

The stainless steel heating plate GN 1/2 for pre-tempering and passive keeping warm via the food transport in Rieber thermoport® models can be inserted horizontally via the support ledges.



Weight	Order no.
kg	
1,4	89080171

Tap hinge cpl. for door TP 1000K/KB



Weight	Order no.
kg	
0,1	37138914

Transport / dispensing trolley for portable plastic & stainless steel thermoport® models

Robust stainless steel trolley, for transporting portable thermoport® plastic/ stainless steel boxes 50, 100, 600 or 1000. On sturdy shelf with non-slip embossing for 1-3 thermoport® boxes. Can also be used for mobile food serving, by direct scooping from thermoport® top-loading models. All-round impact protection, practical additional storage space on the lower shelf.



More info



Transp./serv.trolley 3 x thermoport®

2fixed-; 1 swivel-; 1 swivel castors with brakes | Castor Ø: 125 mm | 4 corner bumpers

Dimensions	Weight	Max. loading capacity	Order no.
mm	kg	kg	
1775 x 706 x 840	28,0	210	88150301



Transp./serv.trolley 2 x thermoport®

2fixed-; 1 swivel-; 1 swivel castors with brakes | Castor Ø: 125 mm | 4 corner bumpers

Dimensions	Weight	Max. loading capacity	Order no.
mm	kg	kg	
1271 x 706 x 840	22,0	130	88150201



Transp./serv.trolley 1 x thermoport®

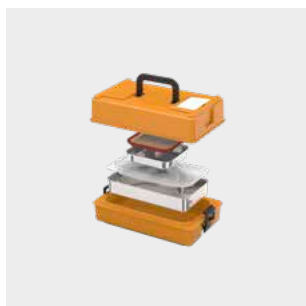
2fixed-; 1 swivel-; 1 swivel castors with brakes | Castor Ø: 125 mm | 4 corner bumpers

Dimensions	Weight	Max. loading capacity	Order no.
mm	kg	kg	
706 x 705 x 840	13,5	80	88150101



Single portion thermoport® plastic

Program Overview



thermoport® 10 - plastic for 1 x menu with soup

Unheated insulation box, double-walled & tightly welded, dishwasher-safe up to +90 °C. Set with 1x 3-piece food tray latent heat storage, 1/6 32mm side dish, each incl. matching lid. For safe transport & keeping single-serving meals warm/cold. Models of 10 (10, 10D, 10KW) are standardised & the food/side dish trays can be used in a compatible way.

- + Simple embossing in the lid - for 1 x menu (3 or 1 part) with soup. Dishwasher safe up to +90 °C



thermoport® 10 D - plastic for 1 x menu and 2 x side dishes

Unheated insulation box, double-walled & tightly welded, dishwasher-safe up to +90 °C. Set with 1x 3-piece food tray latent heat storage, 2x 1/6 32mm side dish, each incl. matching lid. For safe transport & keeping single-serving meals warm/cold. Models of 10 (10, 10D, 10KW) are standardised & the food/supplement trays can be used in a compatible way.

- + Double embossing in the lid - for 1 x menu (3- or 1-part) and 2 x side dishes. Dishwasher safe up to +90 °C



thermoport® 10 KW - plastic with cold comp. & w/o cooling pellet - for food, side dish & cold dish

Insulation box with extra cold compartment, double-walled & tightly welded, dishwasher-safe up to +90 °C. Set equipment: 1x 3-piece food tray latent heat sp., 1x 1/6 22mm & 2x 1/9 22mm side dish tray, each incl. matching lid & 1x 1/6 cooling pellet. For transporting cold/hot meals. Models of 10 (10, 10D, 10KW) are standardised & the food/supplement trays can be used in a compatible way.

- + Additional separate cold compartment in the lid on top - for 1 x meal and 1 x cold dish (dessert/salad) with matching food trays. Dishwasher-safe up to +90 °C



Serving and side dish bowls for thermoport® 10

Different food tray variants for single portioning in GN standard format, practical and efficient. Made of high-quality stainless steel - rustproof, heat-resistant, food-safe, odourless, antibacterial, dishwasher-safe, hygienic, very durable and 100% recyclable. Depending on the type of food, in 3-piece / 1-piece version. From 0.3 to 1.4 litres filling volume for side dishes & main meals, can be closed absolutely safe for transport with matching waterproof or vacuumable lids.

- + Flexibly combinable GN food tray system from 0.3 to 1.4 L for single-portion side dishes & main meals - in 3-section / 1-section design

Digital HACCP documentation - safe & time-saving

Digital HACCP documentation with the CHECK HACCP system. App temperature measurement with Bluetooth-capable core temperature sensor. From goods receipt, production to output. Paper & complete HACCP in real time, visible everywhere in your dashboard.



Core temperature sensor - can be retrofitted at any time - order no. 94 01 01 05



GN lid for side dishes

Versatile GN lid system with high-quality sealing lips, for absolutely reliable transport without leakage and to protect the food for perfect hygiene, quality and durability. Compatible and interchangeable applicable on all matching GN containers. The number one in transport the waterproof plug-in lid also heat-resistant up to 180 °C or the practical, coloured or transparent dome lid versions with or without manual vacuum function perfect for to go (up to +95 °C).

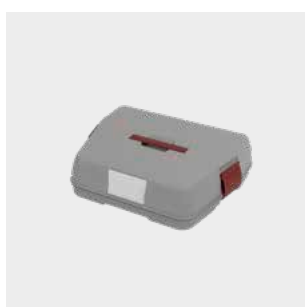
- + Functional GN lid system, compatible change on the matching GN sizes. Our No. 1 in transport the waterproof plug-in lid, heat-resistant up to 180 °C**



thermoport® 20 - Plastic

Unheated insulation box, completely equipped with porcelain system dishes: 1x square menu bowl + heat pellet, 1x round soup bowl and 2x square side dish, each incl. matching plastic lid. Double-walled & tightly welded, dishwasher-safe up to +90°C. Weight loaded approx. 5 kg

- + With porcelain system dishes: 1x square menu bowl + heat pellet, 1x round soup bowl & 2x square side dishes, each + lid. Dishwasher safe up to +90°C**



thermoport® 21 - plastic with menu plate 1 or 2 pcs, heat pellet, 1x soup, 2x side dish

Unheated insulation box, completely equipped with porcelain system dishes: 1x round plate 1tlg (Ø230mm) + heat pellet, 1x round soup bowl and 2x square side dishes (small&large), each incl. matching plastic lid. Double-walled & tightly welded, dishwasher-safe up to +90°C. Weight when loaded approx. 5 kg.

- + With porcelain system dishes: 1x round plate 1tlg (Ø230mm) + heat pellet, 1x round soup bowl & 2x square side dishes, each with lid. Dishwasher safe up to +90°C**

thermoport® 10 - plastic for 1 x menu with soup

Unheated insulation box, double-walled & tightly welded, dishwasher-safe up to +90 °C. Set with 1x 3-piece food tray latent heat storage, 1/6 32mm side dish, each incl. matching lid. For safe transport & keeping single-serving meals warm/cold. Models of 10 (10, 10D, 10KW) are standardised & the food/side dish trays can be used in a compatible way.



More info



thermoport® K 10

Unheated single-portion insulation box made of plastic with a single recess in the lid, double-walled and tightly welded, dishwasher-safe (up to +90°C) - for the transport of 1 x meal and soup through „meals on wheels“.

Dimensions	Weight	Colour	Order no.
mm	kg		
380 x 220 x 153	1,3	orange	85020101



thermoport® 10 set 1

Set consisting of 1x unheated plastic single-portion insulation box + lid, 1x 3-compartment, stainless steel food tray + lid, 1x GN 1/6 side dish tray, 32 mm deep + press-in lid.

Dimensions	Weight	Colour	Order no.
mm	kg		
380 x 220 x 153	3,2	orange	85022705



thermoport® 10 D - plastic for 1 x menu and 2 x side dishes

Unheated insulation box, double-walled & tightly welded, dishwasher-safe up to +90 °C. Set with 1x 3-piece food tray latent heat storage, 2x 1/6 32mm side dish, each incl. matching lid. For safe transport & keeping single-serving meals warm/cold. Models of 10 (10, 10D, 10KW) are standardised & the food/supplement trays can be used in a compatible way.



More info



thermoport® K 10 D

Unheated single-portion insulation box made of plastic with a double recess in the lid, double-walled and tightly welded, dishwasher-safe (up to +90°C) - for the transport of 1 x meal and 2 side dishes through „meals on wheels“.

Dimensions	Weight	Colour	Order no.
mm	kg		
377 x 221 x 158	1,2	orange	85020102



thermoport® 10 D set 1

Set consisting of 1x unheated plastic single-portion insulation box with a double recess in the lid + lid, 1x 3-compartment, stainless steel food tray + lid, 2x GN 1/6 side dish tray, 32 mm deep + press-in lid.

Dimensions	Weight	Colour	Order no.
mm	kg		
380 x 220 x 153	3,4	orange	85022706



thermoport® 10 KW - plastic with cold comp. & w/o cooling pel- let - for food, side dish & cold dish

solation box with extra cold compartment, double-walled & tightly welded, dishwasher-safe up to +90 °C. Set equipment: 1x 3-piece food tray latent heat sp., 1x 1/6 22mm & 2x 1/9 22mm side dish tray, each incl. matching lid & 1x 1/6 cooling pellet. For transporting cold/hot meals. Models of 10 (10, 10D, 10KW) are standardised & the food/supplement trays can be used in a compatible way.



More info



thermoport® K 10 KW - orange

Unheated single-portion insulation box made of plastic with an additional cold compartment, double-walled and tightly welded, dishwasher-safe (up to +90°C) - for the transport of 1 x meal and 1 cold dish with suitable food trays through „meals on wheels“.

Dimensions	Weight	Order no.
mm	kg	
380 x 220 x 165	1,5	85020103



thermoport® 10 KW set 1

Set consisting of 1x unheated plastic single-portion insulation box with a cold compartment + intermediate compartment and lid, 1x 3-compartment, stainless steel food tray + lid, 2x GN 1/6 side dish tray, 32 mm deep + press-in lid.

Dimensions	Weight	Order no.
mm	kg	
380 x 220 x 165	3,7	85022702



thermoport® 10 KW set 2

Set with a cooling pellet consisting of 1x unheated plastic single-portion insulation box with a cold compartment + intermediate compartment and lid, 1x 3-compartment, stainless steel food tray + lid, 1x GN 1/6 side dish tray, 32 mm deep + press-in lid, 1x cooling pellet, 2x GN1/9 side dish tray, 22 mm.

Dimensions	Weight	Order no.
mm	kg	
380 x 220 x 165	4,2	85022703



thermoport® 10 KW set 3

Set consisting of 1x unheated plastic single-portion insulation box with a cold compartment + intermediate compartment and lid, 1x 3-compartment, stainless steel food tray + lid, 1x GN 1/6 side dish tray, 32 mm deep + press-in lid and 2x GN1/9 side dish tray, 32 mm.

Dimensions	Weight	Order no.
mm	kg	
380 x 220 x 165	3,8	85022704

Serving and side dish bowls for thermoport® 10

Different food tray variants for single portioning in GN standard format, practical and efficient. Made of high-quality stainless steel - rustproof, heat-resistant, food-safe, odourless, antibacterial, dishwasher-safe, hygienic, very durable and 100% recyclable. Depending on the type of food, in 3-piece / 1-piece version. From 0.3 to 1.4 litres filling volume for side dishes & main meals, can be closed absolutely safe for transport with matching waterproof or vacuumable lids.



More info



GN tray 1/6 22mm

Dimensions	Weight	Order no.
mm	kg	
159,5 x 146 x 22	0,2	85022018



GN dish cont. 1/6 32mm - without lid

GN bowl made of stainless steel - for filling thermoport® 10 models or for individual portioning (0,4 L). Hygienic, food-safe, odorless, antibacterial, tight corner radii for more stability and volume.

Dimensions	Weight	Order no.
mm	kg	
159,5 x 146 x 32	0,2	85022022



GN dish cont.1/6 32mm + press-in lid

GN bowl including watertight press-in lid made of stainless steel - for food / side dishes to fill thermoport® 10 models or for individual portioning (0,6 L). Hygienic, food-safe, odorless, antibacterial, tight corner radii for more stability and volume.

Dimensions	Weight	Order no.
mm	kg	
159,5 x 146 x 35,5	0,3	85022001



GN dish cont. 1/6 48mm - without lid

GN bowl made of stainless steel - for food / side dishes to fill thermoport® 10 models or for individual portioning (0,7 L). Hygienic, food-safe, odorless, antibacterial, tight corner radii for more stability and volume, high-quality stacking shoulder for perfect stackability and air circulation.

Dimensions	Weight	Order no.
mm	kg	
159,5 x 146 x 48	0,2	85022035





GN dish cont.1/6 48mm + press-in lid

GN bowl including watertight press-in lid made of stainless steel - for food / side dishes to fill thermoport® 10 models or for individual portioning (0,7 L). Hygienic, food-safe, odorless, antibacterial, tight corner radii for more stability and volume.

Dimensions	Weight	Order no.
mm	kg	
159,5 x 146 x 51,5	0,4	85022002



GN dish cont.1/6 60mm - without lid

GN bowl made of stainless steel - for food / side dishes for individual portioning (0,9 L). Hygienic, food-safe, odorless, antibacterial, tight corner radii for more stability and volume, high-quality stacking shoulder for perfect stackability and air circulation.

Dimensions	Weight	Order no.
mm	kg	
159,5 x 146 x 60	0,2	85022092

GN dish cont.1/6 60mm + press-in lid

GN bowl made of stainless steel including waterproof press-in lid - for food / side dishes for individual portioning (0,9 L). Hygienic, food-safe, odorless, antibacterial, tight corner radii for more stability and volume, high-quality stacking shoulder for perfect stackability and air circulation.

Dimensions	Weight	Order no.
mm	kg	
159,5 x 146 x 63,5	0,3	85022091



GN dish cont. 1/9 32mm - without lid

GN bowl made of stainless steel - for food / side dishes to fill thermoport® 10 models or for individual portioning (0,3 L). Hygienic, food-safe, odorless, antibacterial, tight corner radii for more stability and volume, high-quality stacking shoulder for perfect stackability and air circulation.

Dimensions	Weight	Order no.
mm	kg	
159,5 x 92 x 32	0,1	85022066



GN dish cont.1/9 32mm + press-in lid

GN bowl made of stainless steel including watertight press-in lid - for food / side dishes to fill thermoport® 10 models or for individual portioning (0,3 L). Hygienic, food-safe, odorless, antibacterial, tight corner radii for more stability and volume.

Dimensions	Weight	Order no.
mm	kg	
159,5 x 92 x 35	0,3	85022024

GN cold food tray 1/9 22mm + poly lid

GN-Cold food tray made of stainless steel including a polypropylene lid - for equipping thermoport® 10 models.

Dimensions mm	Weight kg	Order no.
160,3 x 91,7 x 44	0,2	85022028



GN multi-portion tray 1/6 91mm

Stainless steel multi-portion tray - for equipping thermoport® 10 models.

Dimensions mm	Weight kg	Order no.
159,5 x 146 x 91	0,3	85022009



GN multi-portion cont. 1/6 91mm + lid

Multi-portion tray including a watertight press-in lid made of stainless steel - for equipping thermoport® 10 models.

Dimensions mm	Weight kg	Order no.
159,5 x 146 x 94,5	0,5	85022008



Menu plate, 1-comp., s/s - without lid

3-compartment food tray made of stainless steel with a latent/heating agent - for equipping thermoport® 10 models.

Dimensions mm	Weight kg	Order no.
288,2 x 163 x 51	1,2	85022062



Menu plate, 3-comp. - without lid

3-compartment food tray made of stainless steel with a latent/heating agent - for equipping thermoport® 10 models.

Dimensions mm	Weight kg	Order no.
288,2 x 163 x 51	1,4	85022060



1 compartment s/s meal tray - polyc. lid

Single-part stainless steel food tray with latent heat storage including polypropylene lid - for use with thermoport® 10 models.

Dimensions mm	Weight kg	Order no.
288,2 x 163 x 51	1,6	85022004



3 compartment s/s meal tray - polyc. lid

Three-compartment stainless steel food tray with latent heat storage, including polypropylene lid - for loading thermoport® 10 models.



Dimensions	Weight	Order no.
mm	kg	
288,2 x 163 x 51	1,8	85022003



GN lid for side dishes

Versatile GN lid system with high-quality sealing lips, for absolutely reliable transport without leakage and to protect the food for perfect hygiene, quality and durability. Compatible and interchangeable applicable on all matching GN containers. The number one in transport the waterproof plug-in lid also heat-resistant up to 180 °C or the practical, coloured or transparent dome lid versions with or without manual vacuum function perfect for to go (up to +95 °C).



More info



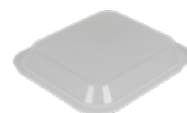
GN press-in lid 1/6 for dish tray

Dimensions mm	Colour	Order no.
160 x 146 x 12,5	-	85022007



GN domed lid 1/6 - without seal transp.

Dimensions mm	Colour	Order no.
162 x 176 x 28,5	transparent	84200101



GN domed lid 1/6 - with seal

Dimensions mm	Colour	Order no.
162 x 176	black	84200162
162 x 176	transparent	84200129
162 x 176	orange	84200160
162 x 176	green	84200161



GN domed lid 1/9 - without seal

Dimensions mm	Colour	Order no.
108 x 176	orange	84200158
108 x 176	transparent	84200102



thermoport® 20 - Plastic

Unheated insulation box, completely equipped with porcelain system dishes: 1x square menu bowl + heat pellet, 1x round soup bowl and 2x square side dish, each incl. matching plastic lid. Double-walled & tightly welded, dishwasher-safe up to +90°C. Weight loaded approx. 5 kg



More info



thermoport® K 20 with handle variant S4

Unheated single-serving isolation box made of plastic equipped with system dishes, double-walled and tightly welded, dishwasher safe (up to +90 °C) - for „meals on wheels“ transport. Set includes 1 x 3-fluted CNS menu tray with latent heat storage, 1 x porcelain soup bowl, 2 x porcelain cold bowls.



Dimensions	Weight	Order no.
mm	kg	
454 x 364 x 111	5,2	85020704

thermoport® K 20 neutral V. P3.1-orange

Unheated single-portion insulation box made of plastic, equipped with systemware, double-walled and tightly welded, dishwasher-safe (up to +90°C) - for the transport of „meals on wheels“. Set contains 1 x heating pellet and 1 x undivided meal tray, 1 x soup bowl and 2 x cold food trays, each made of porcelain.



Dimensions	Weight	Order no.
mm	kg	
454 x 364 x 111	4,5	85020716

thermoport® K 20 neutral V. P3.2-orange

Unheated single-portion insulation box made of plastic, equipped with systemware, double-walled and tightly welded, dishwasher-safe (up to +90°C) - for the transport of „meals on wheels“. Set contains 1 x heating pellet and 1 x 3-compartment meal tray, 1 x soup bowl and 2 x cold food trays, each made of porcelain.



Dimensions	Weight	Order no.
mm	kg	
454 x 364 x 111	4,3	85020717

thermoport® K 20 unheated unload.-orange

Unheated single-portion insulation box made of plastic, without any equipment, double-walled and tightly welded, dishwasher-safe (up to +90°C) - for the transport of „meals on wheels“.



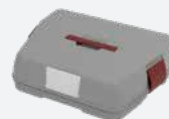
Dimensions	Weight	Order no.
mm	kg	
454 x 364 x 111	2,0	85020705

thermoport® 21 - plastic with menu plate 1 or 2 pcs, heat pellet, 1x soup, 2x side dish

Unheated insulation box, completely equipped with porcelain system dishes: 1x round plate 1tlg (Ø230mm) + heat pellet, 1x round soup bowl and 2x square side dishes (small&large), each incl. matching plastic lid. Double-walled & tightly welded, dishwasher-safe up to +90°C. Weight when loaded approx. 5 kg.



More info



thermoport® K 21 unheated V.1.1 - grey

Unheated single-portion insulation box made of plastic, equipped with systemware, double-walled and tightly welded, dishwasher-safe (up to +90°C) - for the transport of 1 x meal on an undivided plate, 1x soup and 2x side dishes through „meals on wheels“.

Dimensions

mm

454 x 364 x 111

Weight

kg

4,5

Order no.

[85020711](#)



thermoport® K 21 unheated V.1.2 - grey

Unheated single-portion insulation box made of plastic, equipped with systemware, double-walled and tightly welded, dishwasher-safe (up to +90°C) - for the transport of 1 x meal on an undivided plate, 1x soup and 2x side dishes through „meals on wheels“.

Dimensions

mm

454 x 364 x 111

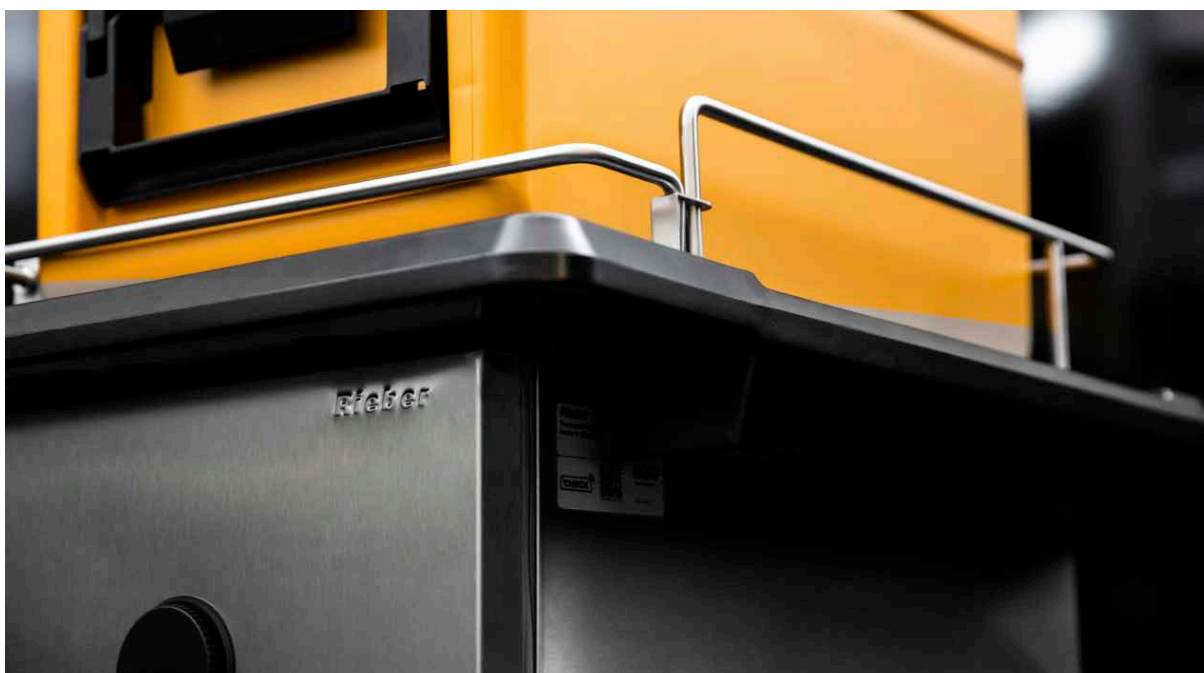
Weight

kg

3,9

Order no.

[85020712](#)



Beverage containers - thermi

Program Overview



Beverage container - thermi stainless steel - heated

Beverage container made of hygienic stainless steel, with fixed heater 230V/80W, rear connection cable 2m. Double-walled insulated, deep-drawn inside & seamlessly welded. Outside 2 tension locks & 1 carrying handle, silicone seal, vent plug & shock-proof, easy-to-clean drain cock. For transporting 7-24 litres of liquid depending on model.



Beverage container - thermi stainless steel - unheated

Beverage container made of hygienic stainless steel, double-walled insulated, inner container deep-drawn & seamlessly welded, suitable for direct filling. Outside with 2 tension locks & 1 carrying handle, silicone seal, vent plug & shock-proof, easy-to-clean drain tap. For transporting 7-24 litres of liquid depending on model.



With deep-drawn & seamlessly welded stainless steel inner container, for direct filling. Very heat-resistant, food-safe, odourless & antibacterial



Beverage container - thermi plastic - unheated

Beverage container made of impact-resistant germ-inhibiting polypropylene, suitable for direct filling, dishwasher safe up to +90°C. Double-walled insulated, with/without drip tray (stackable), integrated drain tap with bayonet lock, easy to carry with 2 U-clips & 3 carrying handles. For 10-40 litres of liquid per model, usable -20°C to +100°C.

Digital HACCP documentation - safe & time-saving

Digital HACCP documentation with the CHECK HACCP system. App temperature measurement with Bluetooth-capable core temperature sensor. From goods receipt, production to output. Paper & complete HACCP in real time, visible everywhere in your dashboard.



Core temperature sensor - can be retrofitted at any time - order no. 94 01 01 05



Beverage container - thermi stainless steel - heated

Beverage container made of hygienic stainless steel, with fixed heater 230V/80W, rear connection cable 2m. Double-walled insulated, deep-drawn inside & seamlessly welded. Outside 2 tension locks & 1 carrying handle, silicone seal, vent plug & shock-proof, easy-to-clean drain cock. For transporting 7-24 litres of liquid depending on model.



More info



Bever. container Thermi CNS 8l heated

Connection value: 110 W | Safety switch (type F) | Cable length: 2000 mm

Dimensions mm	Capacity L	Weight kg	Order no.
219 x 368 x 335	8	7,2	85040101



Bever. container Thermi CNS 12l heated

Connection value: 110 W | Safety switch (type F) | Cable length: 2000 mm

Dimensions mm	Capacity L	Weight kg	Order no.
219 x 368 x 435	12	7,8	85040102



Bever. container Thermi CNS 16l heated

Connection value: 110 W | Safety switch (type F) | Cable length: 2000 mm

Dimensions mm	Capacity L	Weight kg	Order no.
219 x 368 x 535	16	10,2	85040103



Bever. container Thermi CNS 24l heated

Connection value: 110 W | Safety switch (type F) | Cable length: 2000 mm

Dimensions mm	Capacity L	Weight kg	Order no.
219 x 368 x 735	24	14,6	85040104

Beverage container - thermi stainless steel - unheated

Beverage container made of hygienic stainless steel, double-walled insulated, inner container deep-drawn & seamlessly welded, suitable for direct filling. Outside with 2 tension locks & 1 carrying handle, silicone seal, vent plug & shock-proof, easy-to-clean drain tap. For transporting 7-24 litres of liquid depending on model.



More info



Bever. container Thermi CNS 7l unheated

Dimensions	Capacity	Weight	Order no.
mm	L	kg	
147 x 426 x 407	7	5,0	85040107



Bever. container Thermi CNS 8l unheated

Dimensions	Capacity	Weight	Order no.
mm	L	kg	
219 x 368 x 335	8	6,1	85040112



Beverage container - thermi plastic - unheated

Beverage container made of impact-resistant germ-inhibiting polypropylene, suitable for direct filling, dishwasher safe up to +90°C. Double-walled insulated, with/without drip tray (stackable), integrated drain tap with bayonet lock, easy to carry with 2 U-clips & 3 carrying handles. For 10-40 litres of liquid per model, usable -20°C to +100°C.



More info



Bever. container Thermi K 12l unheated



Dimensions mm	Capacity L	Weight kg	Order no.
240 x 620 x 430	12	6,2	85040203



thermi accessories

Matching accessories for the corresponding thermi models, such as the base saucers for placing underneath made of hygienic & robust stainless steel for slip- & drip-proof beverage filling from the thermi drain tap above.



More info

Base - Thermi CNS 8l, 12l, 16l, 24l

Matching stand for the stainless steel Thermis CNS 8 l, 12 l, 16 l and 24 l - with a perforated cup holder and drip tray.

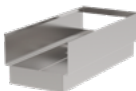
Weight	Order no.
kg	
2,0	85040304



Base - Thermi CNS 7l heated/unheated

Matching base for the stainless steel Thermis CNS 7 l heated/neutral.

Weight	Order no.
kg	
0,8	85040305



GN banquet trolley

Program Overview



GN banquet trolley stainless steel heated - digital with humidification

Banquet trolley, digital convection heating +30°C to +100°C, wet/dry heatable. With base tray, seamless deep-drawn support ledges (115 mm ledge spacing with tip safety) for GN grates/containers (plate Ø max. 310 mm). All-round roof gallery, double-walled insulation, push handle on front. Safe transport, keeping warm ready to serve, simultaneous serving. Rated voltage 1N AC 230V 50/60Hz.



Central control & separate humidification controller. Wet & dry heatable, dry heated significant energy saving & less cleaning effort



GN banquet trolley Stainless steel heated - analog without humidification

Banquet trolley, analogue convection heating +30°C to +90°C. Cabinet compartment with seamless deep-drawn support ledges (115mm ledge spacing with tip safety) for GN grates/containers (plate Ø max. 310mm). Double-walled insulation, low heat loss, push handle on front. For safe transport, keeping warm ready to serve & simultaneous serving. Rated voltage 1N AC 230V 50/60Hz.



GN Banquet Trolley Stainless steel cooled - digital

Banquet trolley, digital convection cooling -12°C to +8°C, 580W at -10°C VT. Seamless deep-drawn support ledges, with tip safety for GN grates/containers (plate Ø max. 310mm). All-round roof gallery, double-walled insulation, push handle on front. Safe transport, ready-to-serve cold holding, simultaneous serving. Rated voltage 1N AC 230V 50/60Hz.



Precise & powerful compressor cooling & circulating air fan. Reliable cooling by evaporator above & cooling machine with condensation evaporation below



GN Banquet Trolley plastic heated and/or unheated - analog/digital

2x banquet transport box, firmly connected on mounted castors, in the combinations heated max. +90°C and/or unheated, with analogue or digitally controllable convection heating from +20°C to max.+85°C. With seamless deep-drawn support ledges for GN grates/containers. Double-walled & tightly welded. For safe transport, ready-to-serve keeping warm & simultaneous serving. Rated voltage 1N AC 230V 50/60Hz.

Digital HACCP documentation - safe & time-saving

Digital documentation with our CHECK HACCP system. Automatic room temperature recording in the banquet trolley, via retrofittable sensors. Paper & complete HACCP during transport, in real time, visible everywhere in your dashboard.



Automatic room temp. sensor - can be retrofitted any time - order no. 94020138



GN banquet trolley stainless steel heated - digital with humidification

Banquet trolley, digital convection heating +30°C to +100°C, wet/dry heatable. With base tray, seamless deep-drawn support ledges (115 mm ledge spacing with tip safety) for GN grates/containers (plate Ø max. 310 mm). All-round roof gallery, double-walled insulation, push handle on front. Safe transport, keeping warm ready to serve, simultaneous serving. Rated voltage 1N AC 230V 50/60Hz.



More info



Banquet trolley 2/1 heated - rails 115mm

Max. Number of GN 2/1 grids: 11 | Connection value: 2.250 W | Cable length: 2000 mm | Protection class: IPX4 | Number of push handle(s): 1 | 2 fixed-; 2 swivel castors | Castor Ø: 200 mm | Max. Load capacity: 120 kg | 4 corner bumpers

Dimensions mm	Weight kg	Support rails	Support distance mm	Order no.
777 x 837 x 1712	107,0	11	115	88230104



Banquet trolley 2/1 heated - rails 70mm

Max. Number of GN 2/1 grids: 18 | Connection value: 2.250 W | Cable length: 2000 mm | Protection class: IPX5 | Number of push handle(s): 1 | 2 fixed-; 2 swivel castors | Castor Ø: 200 mm | Max. Load capacity: 120 kg | 4 corner bumpers

Dimensions mm	Weight kg	Support rails	Support distance mm	Order no.
777 x 837 x 1712	108,0	18	70	88230105



Banquet trolley 2x 2/1 heated - 115 mm

Max. Number of GN 2/1 grids: 22 | Connection value: 2.900 W | Cable length: 2000 mm | Protection class: IPX5 | Number of push handle(s): 2 | 2 fixed-; 2 swivel castors | Castor Ø: 200 mm | Max. Load capacity: 220 kg | 4 corner bumpers

Dimensions mm	Weight kg	Support rails	Support distance mm	Order no.
1490 x 837 x 1712	176,0	22	115	88230203



Banquet trolley 2x 2/1 heated - 70 mm

Max. Number of GN 2/1 grids: 36 | Connection value: 2.900 W | Cable length: 2000 mm | Protection class: IPX4 | Number of push handle(s): 2 | 2 fixed-; 2 swivel castors | Castor Ø: 200 mm | Max. Load capacity: 220 kg | 4 corner bumpers

Dimensions mm	Weight kg	Support rails	Support distance mm	Order no.
1490 x 837 x 1712	183,0	36	70	88230204

GN banquet trolley Stainless steel heated - analog without humidification

Banquet trolley, analogue convection heating +30°C to +90°C. Cabinet compartment with seamless deep-drawn support ledges (115mm ledge spacing with tip safety) for GN grates/containers (plate Ø max. 310mm). Double-walled insulation, low heat loss, push handle on front. For safe transport, keeping warm ready to serve & simultaneous serving. Rated voltage 1N AC 230V 50/60Hz.



More info



Banquet trolley 2/1 light heated -115 mm

Max. Number of GN 2/1 grids: 11 | Connection value: 1.750 W | Cable length: 2000 mm | Protection class: IPX4 | Number of push handle(s): 1 | 2 fixed-; 2 swivel castors | Castor Ø: 200 mm | Max. Load capacity: 120 kg | 4 corner bumpers

Dimensions mm	Weight kg	Support rails	Support distance mm	Order no.
777 x 837 x 1674	101,0	11	115	88230111

Banquet trolley.2/1 light heated - 70 mm

Max. Number of GN 2/1 grids: 18 | Connection value: 1.750 W | Cable length: 2000 mm | Protection class: IPX5 | Number of push handle(s): 1 | 2 fixed-; 2 swivel castors | Castor Ø: 200 mm | Max. Load capacity: 120 kg | 4 corner bumpers

Dimensions mm	Weight kg	Support rails	Support distance mm	Order no.
777 x 837 x 1674	104,0	18	70	88230112

Banquet trolley 2x2/1 light heated - 115

Max. Number of GN 2/1 grids: 22 | Connection value: 2.400 W | Cable length: 2000 mm | Protection class: IPX5 | Number of push handle(s): 1 | 2 fixed-; 2 swivel castors | Castor Ø: 200 mm | Max. Load capacity: 220 kg | 4 corner bumpers

Dimensions mm	Weight kg	Support rails	Support distance mm	Order no.
1490 x 837 x 1674	168,0	22	115	88230211



Banquet trolley 2x2/1 light heated - 70

Max. Number of GN 2/1 grids: 36 | Connection value: 2.400 W | Cable length: 2000 mm | Protection class: IPX5 | Number of push handle(s): 1 | 2 fixed-; 2 swivel castors | Castor Ø: 200 mm | Max. Load capacity: 220 kg | 4 corner bumpers

Dimensions mm	Weight kg	Support rails	Support distance mm	Order no.
1490 x 837 x 1674	172,0	36	70	88230212



GN Banquet Trolley

Stainless steel cooled - digital

Banquet trolley, digital convection cooling -12°C to +8°C, 580W at -10°C VT. Seamless deep-drawn support ledges, with tip safety for GN grates/containers (plate Ø max. 310mm). All-round roof gallery, double-walled insulation, push handle on front. Safe transport, ready-to-serve cold holding, simultaneous serving. Rated voltage 1N AC 230V 50/60Hz.



More info



banquet tr.2x2/1 refrig. R290, rails 115

Max. Number of GN 2/1 grids: 22 | Connection value: 600 W | Cable length: 2000 mm | Protection class: IPX2 | Number of push handle(s): 2 | 2 fixed-; 2 swivel castors | Castor Ø: 200 mm | Max. Load capacity: 220 kg | 4 corner bumpers | Refrigerant: R290

Dimensions mm	Weight kg	Support rails	Support distance mm	Order no.
1482 x 837 x 1771	194,0	22	115	88230405



banquet tr. 2/1 refrig. R290, rails 115

Max. Number of GN 2/1 grids: 11 | Connection value: 600 W | Cable length: 2000 mm | Protection class: IPX2 | Number of push handle(s): 1 | 2 fixed-; 2 swivel castors | Castor Ø: 200 mm | Max. Load capacity: 120 kg | 4 corner bumpers | Refrigerant: R290

Dimensions mm	Weight kg	Support rails	Support distance mm	Order no.
801 x 876 x 1765	143,0	11	115	88230406



GN Banquet Trolley plastic heated and/or unheated - analog/digital

2x banquet transport box, firmly connected on mounted castors, in the combinations heated max. +90°C and/or unheated, with analogue or digital-ly controllable convection heating from +20°C to max.+85°C. With seamless deep-drawn support ledges for GN grates/containers. Double-walled & tightly welded. For safe transport, ready-to-serve keeping warm & simultaneous serving. Rated voltage 1N AC 230V 50/60Hz.



More info



thermoport® K 6000 Maxi D heated

Heating control: digital | Connection value: 500 W | Cable length: 2000 mm | 2 fixed-; 2 swivel castors with brakes | Castor-Ø: 125 mm | Weight: 55 kg

Dimensions	Support rails	Support distance	Colour	Order no.
mm		mm		
766 x 790 x 1280	2 x 12	36	orange	85020825
766 x 790 x 1280	2 x 12	36	black	85020826



thermoport® K 6000 Maxi A heated

Heating control: analogue | Connection value: 500 W | Cable length: 2000 mm | 2 fixed-; 2 swivel castors with brakes | Castor-Ø: 125 mm | Weight: 55 kg

Dimensions	Support rails	Support distance	Colour	Order no.
mm		mm		
766 x 790 x 1280	2 x 12	36	orange	85020823
766 x 790 x 1280	2 x 12	36	black	85020824



thermoport® K 2x6000 unheated

2 fixed-; 2 swivel castors with brakes | Castor Ø: 125 mm | Weight: 53 kg

Dimensions	Support rails	Support distance	Colour	Order no.
mm		mm		
766 x 779 x 1280	2 x 12	36	orange	85020802
766 x 779 x 1280	2 x 12	36	black	85020812

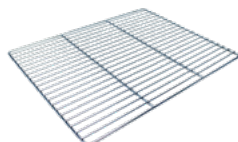


GN banquet trolley stainless steel Accessories

Suitable accessories for banquet trolleys - such as GN grates made of stainless steel, in robust or light design, for flexible insertion on the support ledges, so that plates/cloches/food can be placed and transported safely.



More info



Stainless steel grid GN 2/1 530x650mm

The GN grill - for insertion into cabinets / carts / compartments in Gastronorm dimensions made of stainless steel.

Weight

kg

2,1

Order no.

[84140101](#)

Stainless steel grid GN 2/1 L - 530x650

The GN grill in lightweight design - for insertion into cabinets / carts / compartments in Gastro-norm dimensions made of stainless steel.

Weight

kg

1,4

Order no.

[84140106](#)



GN banquet trolley plastic Accessories

Suitable accessories for banquet trolleys made of plastic.



More info

GN cooling pellet plastic 1/1 - orange

Plastic GN 1/1 cooling plate for pre-heating and passive cooling during the transportation of food in Rieber thermoport® models, can be inserted horizontally on the support rails.

Weight

kg

2,6

Order no.

[85022038](#)



GN cooling pellet 1/1 plastic - black

Plastic GN 1/1 cooling plate for pre-heating and passive cooling during the transportation of food in Rieber thermoport® models, can be inserted horizontally on the support rails.

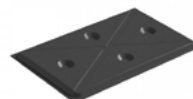
Weight

kg

2,7

Order no.

[85022067](#)



Heating pellet CNS GN 1/1

The stainless steel heating plate GN 1/1 for pre-tempering and passive keeping warm via the food transport in Rieber thermoport® models can be inserted horizontally via the support ledges.

Weight

kg

2,9

Order no.

[89080172](#)



ISO divider 1/1 - TH K 1000 - black

Plastic insulated divider in a GN size for the insulated separation of a cold and hot zone - when transporting food in the thermoport® K 1000.

Weight

kg

1,1

Order no.

[85022069](#)

Insulated divider plastic - orange

Plastic insulated divider - for the thermal separation of a cold and hot zone in plastic thermo-ports.

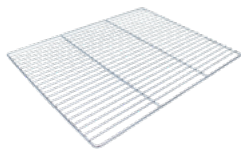
Weight

kg

1,1

Order no.

[85022012](#)



Stainless steel grid GN 2/1 L - 530x650

The GN grill in lightweight design - for insertion into cabinets / carts / compartments in Gastro-norm dimensions made of stainless steel.

Weight

kg

1,4

Order no.

[84140106](#)



Insert frame - 1/4, 1/6, 2/4

Stainless steel GN 1/1 insert frame with 1 longitudinal supports - for the insertion of smaller GN sizes, such as 4x 1/4, 6x 1/6 or 2x 2/4.

Weight

kg

0,5

Order no.

[85012009](#)



Insert frame - 1/6, 1/9

Stainless steel GN 1/1 insert frame with 2 cross supports - for the insertion of smaller GN sizes, such as 6x 1/6 or 9x 1/9.

Weight

kg

0,7

Order no.

[85012010](#)









