



Made in Germany since 1925

4.

Frontcooking

Our mobile ACS front cooking station with integrated three-sided edge extraction technology – the “Air-Cleaning-System” – made entirely of high-quality stainless steel, offers maximum flexibility and mobility in cooking, turning front cooking into an experience – completely free from unwanted odors.

Combined with the varithek® modular system, the ACS gains maximum versatility for all types of food preparation – using the GN cooking pot thermoplates® made from unique SWISS-PLY multi-layer material to ensure the highest food quality. Whether it's grilling, pasta, deep-frying, or using Ceran or induction modules – anything is possible.

acs Frontcooking Stations

Program Overview



acs 600 ec - for 1 varithek® Module with cross suction (ec) - with/without plasma technology

Mobile cooking station with push-and-pull extraction from left to right (ec). Multi-stage filtration system: grease/activated carbon/pollutant filters, with a removable grease collection tray. Featuring splash guards, an enclosed filter compartment, and a fully welded mounting bay for varithek® modules: 400 direct & 1/1 via AST. Includes 1x 230 V and 1x 400 V power outlets.

- + With patented O3 plasma technology, the plasma generator not only neutralises odours but also kills bacteria and microorganisms



acs 1000 ec - for 2 varithek® modules with cross suction (ec) - with/without plasma technology

Mobile cooking station with push-and-pull extraction from left to right (ec). Multi-stage filtration system: grease/activated-carbon/pollutant filters, with a removable grease collection tray. Equipped with splash guards, an enclosed cabinet space, and a fully welded mounting bay for varithek® modules: 400 direct & 1/1 via AST. Includes 2x 230 V and 2x 400 V power outlets.

- + With patented O3 plasma technology, the plasma generator not only neutralises odours but also kills bacteria and microorganisms



acs 1100 d3 - for 2 varithek® modules with 3-sided edge extraction (d3) - with/without plasma techn.

Mobile cooking station with three-sided perimeter extraction (d3). Multi-stage filtration system: grease/activated-carbon/pollutant filters, with a removable grease collection tray. Equipped with splash guards, an enclosed cabinet space, and a fully welded mounting bay for varithek® modules: 400 direct & 1/1 via AST. Includes 2x 230 V and 2x 400 V power outlets.

- + With patented O3 plasma technology, the plasma generator not only neutralises odours but also kills bacteria and microorganisms



acs 1500 d3- for 3 varithek® modules with 3-sided edge extraction (d3) - with/without plasma techn.

Mobile cooking station with push-and-pull extraction from left to right (ec). Features a multi-stage filtration system—grease, activated-carbon, and pollutant filters—with a removable grease collection tray. Equipped with splash guards, an enclosed cabinet compartment, and a fully welded mounting niche for varithek® modules: 400 series direct and 1/1 via AST. Includes 2x 230 V and 2x 400 V power outlets.

- + With patented O3 plasma technology, the plasma generator not only neutralises odours but also kills bacteria and microorganisms

Digital HACCP documentation - safe & time-saving

Digital HACCP documentation with the CHECK HACCP system. App temperature measurement with Bluetooth-capable core temperature sensor. From goods receipt, production to output. Paper & complete HACCP in real time, visible everywhere in your dashboard.



Core temperature sensor - can be retrofitted at any time - order no. 94 01 01 05



acs 1600 O3 - for 3 varithek® modules with 3-sided edge extraction (d3), plasmatech.& compartments

Mobile cooking station with three-sided perimeter extraction (d3) and two H3 functional cabinet compartments offering hot, cold, and neutral configurations. Multi-stage filtration system: grease, activated-carbon, and pollutant filters, with a removable grease collection tray. Fitted with sneeze and splash guards, and a fully welded mounting niche for varithek® modules: 400 series direct and 1/1 via AST.



With patented O3 plasma technology, the plasma generator not only neutralises odours but also kills bacteria and microorganisms



acs 600 ec - for 1 varithek® Module with cross suction (ec) - with/without plasma technology

Mobile cooking station with push-and-pull extraction from left to right (ec). Multi-stage filtration system: grease/activated carbon/pollutant filters, with a removable grease collection tray. Featuring splash guards, an enclosed filter compartment, and a fully welded mounting bay for varithek® modules: 400 direct & 1/1 via AST. Includes 1x 230 V and 1x 400 V power outlets.



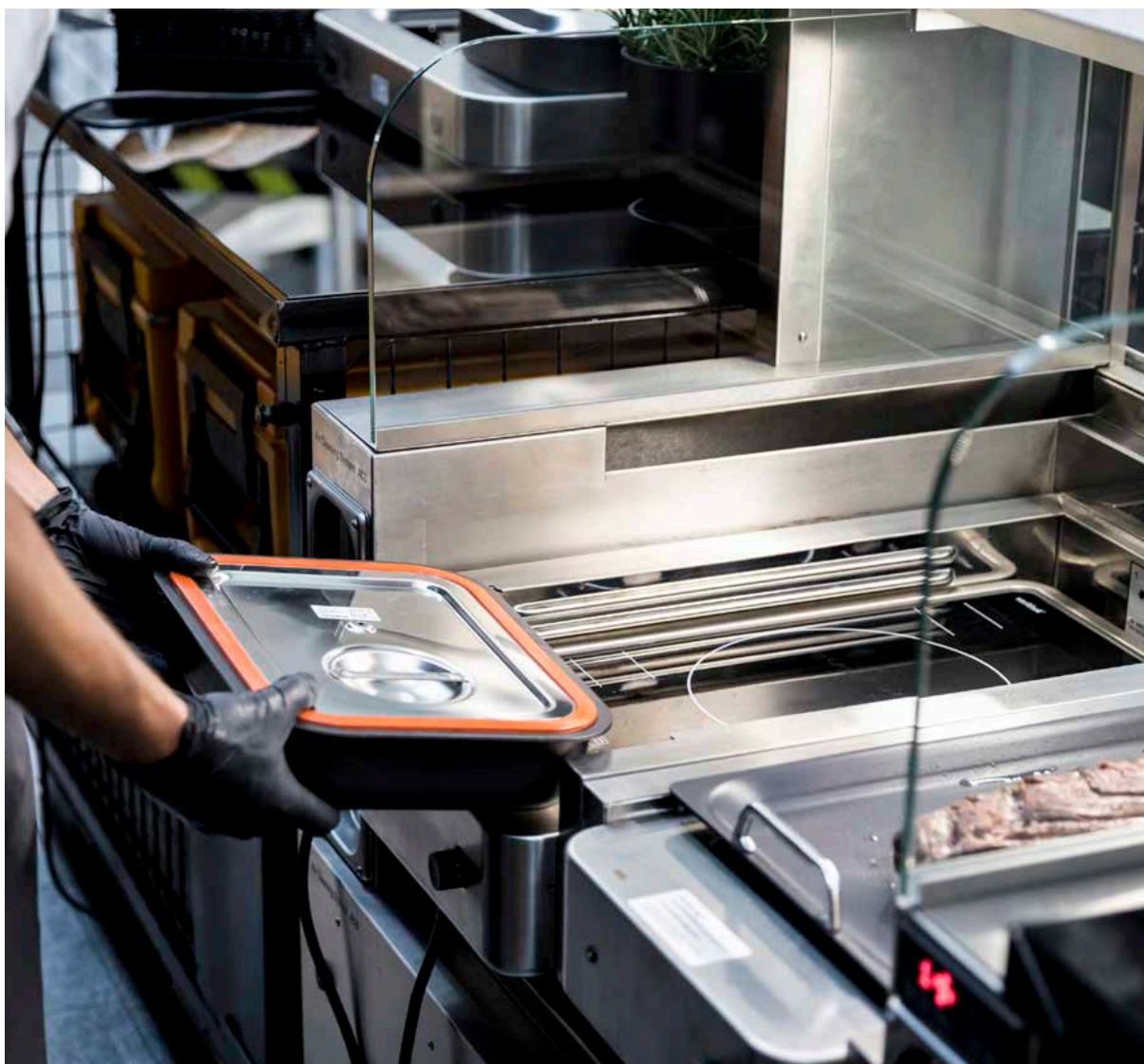
More info



acs 600 ec - 1x varithek®

Rated voltage: 3N AC 400 V 50/60 Hz | Filter system: Activated carbon filter | push & pull extraction | Plug type: CEE-Plug 400V/16A | Cable type: plain cable | Cable length: 2000 mm | Protection class: IPX4 | 2 fixed-; 2 swivel castors | Castor Ø: 80 mm

Dimensions	Weight	Connected load	Order no.
mm	kg	kW	
600 x 760 x 1002	98,0	11,000	91140476



Filter variants for ACS 600

Depending on the duration of use, type of food preparation (frying, steaming, grilling) and intensity of smoke and grease development, there are various filter combinations to choose from, which can be expanded on a modular basis. All 5 filter combinations from Basic, Advanced, Flexible HEPA, Advanced+ to Profi are included: High-performance grease separator, fleece filter & grease collection trays.

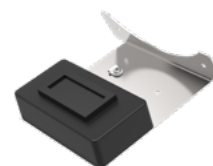


More info



Plasma-Generator Advanced (600)

ADVANCED (with additional plasma filter). Application: For frying and steaming strongly odorous foods, with little fat and low smoke development. Plasma generator in plastic housing on CNS (1.4301) mounting bracket. The plasma generator unit is intended for extending the filter stages of the Rieber acs 600 in the basic version (without electrostatic filter).



Dimensions	Weight	Order no.
mm	kg	
140 x 130 x 34	0,5	91140329

HEPA filter unit (acs 600 ec)

FLEXIBLE HEPA – only suitable for filter combinations without an electrostatic filter. Application: In addition to the Basic or Advanced combination when frying is occasionally more intensive and with more fat. Suitable for frying and steaming strongly odorous foods, with light smoke development. The HEPA filter is used to extend the Basic and Advanced filter levels.



Dimensions	Weight	Order no.
mm	kg	
281 x 451 x 42	-	91140338



acs 1000 ec - for 2 varithek® modules with cross suction (ec) - with/without plasma technology

Mobile cooking station with push-and-pull extraction from left to right (ec). Multi-stage filtration system: grease/activated-carbon/pollutant filters, with a removable grease collection tray. Equipped with splash guards, an enclosed cabinet space, and a fully welded mounting bay for varithek® modules: 400 direct & 1/1 via AST. Includes 2x 230 V and 2x 400 V power outlets.



More info



acs 1000 ec - 2x varithek®

Rated voltage: 3N AC 400 V 50/60 Hz | Filter system: Activated carbon filter | push & pull extraction| Plug type: CEE-Plug 400V/16A | Cable type: plain cable | Cable length: 2000 mm | Protection class: IPX4 | 2 swivel-; 2 swivel castors with brakes | Castor Ø: 80 mm

Dimensions	Weight	Connected load	Order no.
mm	kg	kW	
1000 x 760 x 1002	105,0	11,000	91140474



acs 1000 ec - gantry - 2x varithek®

Rated voltage: 3N AC 400 V 50/60 Hz | Filter system: Activated carbon filter | push & pull extraction| Plug type: CEE-Plug 400V/16A | Cable type: plain cable | Cable length: 2000 mm | Protection class: IPX4 | 2 swivel-; 2 swivel castors with brakes | Castor Ø: 80 mm

Dimensions	Weight	Connected load	Order no.
mm	kg	kW	
1000 x 760 x 1300	125,0	11,000	91140475



Filter variants for ACS 1000

Depending on the duration of use, type of food preparation (frying, steaming, grilling) and intensity of smoke and grease development, there are various filter combinations to choose from, which can be expanded on a modular basis. All 5 filter combinations from Basic, Advanced, Flexible HEPA, Advanced+ to Profi are included: High-performance grease separator, fleece filter & grease collection trays.



More info



Plasma Generator Advanced (1000)

ADVANCED (with additional plasma filter). Application: For frying and steaming strongly odorous foods, with little fat and low smoke development. Neutralises odours and has a disinfecting effect. Bacteria and microorganisms are killed.

Dimensions	Weight	Order no.
mm	kg	
140 x 130 x 34	0,5	91140330



HEPA filter unit (acs 1000 ec)

FLEXIBLE HEPA – only suitable for filter combinations without an electrostatic filter. In combination with 91140330. Application: In addition to the Basic or Advanced combination when frying is occasionally more intensive and involves more fat. Suitable for frying and steaming strongly odorous foods, with light smoke development. The HEPA filter is used to extend the Basic and Advanced filter levels.

Dimensions	Weight	Order no.
mm	kg	
406 x 552 x 29	-	91140339



Electrostatic filter unit (acs1000)

ADVANCED+ (with additional electrostatic filter insert). Application: For frying and steaming with more fat and increased smoke development. Removes smoke. Neutralises odours.

Dimensions	Weight	Order no.
mm	kg	
290 x 287 x 267	6,2	91140328



Plasma-Generator Profi (1000)

PROFI (with additional plasma filter). In combination with 91140328. Application: For frying and grilling with intensive usage over time. High odor and smoke emission. Neutralises odours and has a disinfecting effect. Bacteria and microorganisms are killed.

Dimensions	Weight	Order no.
mm	kg	
287 x 101 x 34	0,5	91140333



acs 1100 d3 - for 2 varithek® modules with 3-sided edge extraction (d3) - with/without plasma techn.

Mobile cooking station with three-sided perimeter extraction (d3). Multi-stage filtration system: grease/activated-carbon/pollutant filters, with a removable grease collection tray. Equipped with splash guards, an enclosed cabinet space, and a fully welded mounting bay for varithek® modules: 400 direct & 1/1 via AST. Includes 2x 230 V and 2x 400 V power outlets.



More info



acs 1100 d3 - 2x varithek®

Rated voltage: 3N AC 400 V 50/60 Hz | Filter system: Activated carbon filter | 3-side edge extraction| Plug type: CEE-Plug 400V/16A | Cable type: plain cable | Cable length: 2000 mm | Protection class: IPX4 | 2 swivel-; 2 swivel castors with brakes | Castor Ø: 80 mm

Dimensions	Weight	Connected load	Order no.
mm	kg	kW	
1100 x 760 x 1103	115,0	11,000	91140470



acs 1100 d3 - gantry - 2x varithek®

Rated voltage: 3N AC 400 V 50/60 Hz | Filter system: Activated carbon filter | 3-side edge extraction| Plug type: CEE-Plug 400V/16A | Cable type: plain cable | Cable length: 2000 mm | Protection class: IPX4 | 2 swivel-; 2 swivel castors with brakes | Castor Ø: 80 mm

Dimensions	Weight	Connected load	Order no.
mm	kg	kW	
1100 x 760 x 1300	145,0	11,000	91140471



acs 1500 d3- for 3 varithek® modules with 3-sided edge extraction (d3) - with/without plasma techn.

Mobile cooking station with push-and-pull extraction from left to right (ec). Features a multi-stage filtration system—grease, activated-carbon, and pollutant filters—with a removable grease collection tray. Equipped with splash guards, an enclosed cabinet compartment, and a fully welded mounting niche for varithek® modules: 400 series direct and 1/1 via AST. Includes 2× 230 V and 2× 400 V power outlets.



More info



acs 1500 d3 - 3x varithek®

Rated voltage: 3N AC 400 V 50/60 Hz | Filter system: Activated carbon filter | 3-side edge extraction| Plug type: CEE-Plug 400V/32A | Cable type: plain cable | Cable length: 2000 mm | Protection class: IPX4 | 2 swivel-; 2 swivel castors with brakes | Castor Ø: 80 mm

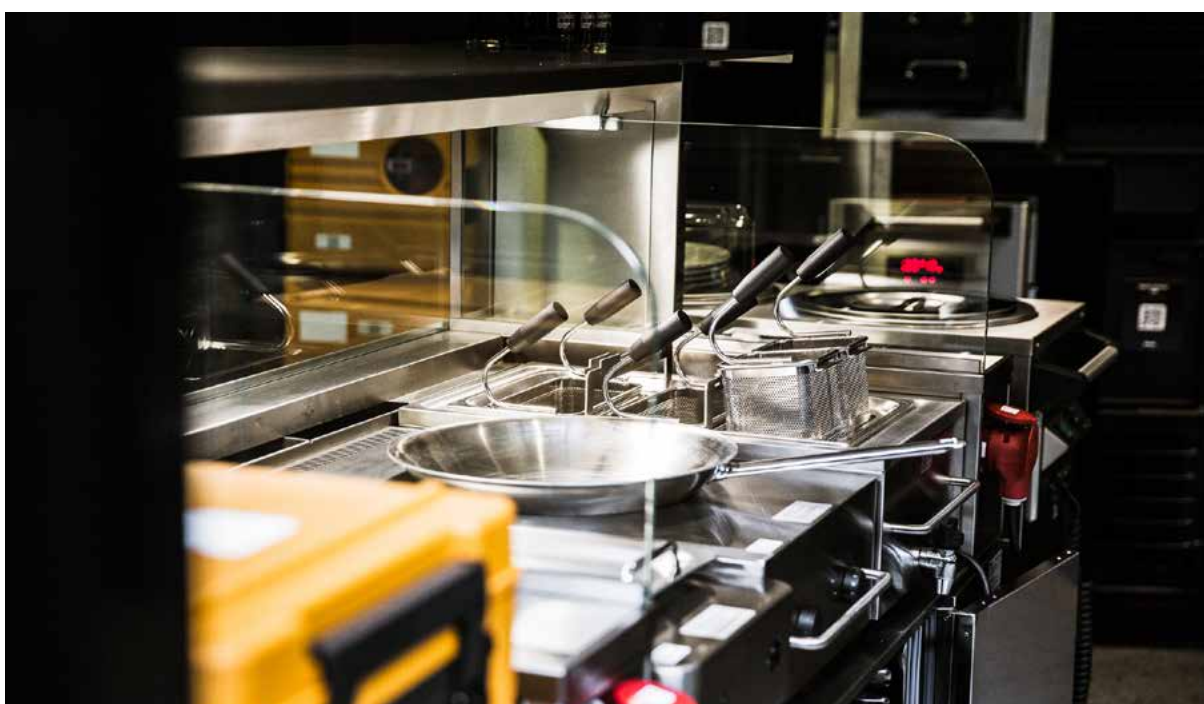
Dimensions mm	Weight kg	Connected load kW	Order no.
1500 x 760 x 1103	-	22,000	91140472



acs 1500 d3 - gantry - 3x varithek®

Rated voltage: 3N AC 400 V 50/60 Hz | Filter system: Activated carbon filter | 3-side edge extraction| Plug type: CEE-Plug 400V/32A | Cable type: plain cable | Cable length: 2000 mm | Protection class: IPX4 | 2 swivel-; 2 swivel castors with brakes | Castor Ø: 80 mm

Dimensions mm	Weight kg	Connected load kW	Order no.
1500 x 760 x 1300	165,0	22,000	91140473

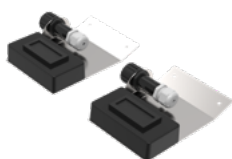


Filter variants for ACS 1100 & 1500

Depending on the duration of use, type of food preparation (frying, steaming, grilling) and intensity of smoke and grease development, there are various filter combinations to choose from, which can be expanded on a modular basis. All 5 filter combinations from Basic, Advanced, Flexible HEPA, Advanced+ to Profi are included: High-performance grease separator, fleece filter & grease collection trays.



More info



Plasma-Generator basic (Kit)

ADVANCED (with additional plasma filter). Application: For frying and steaming strongly odorous foods, with little fat and low smoke development. Plasma generator in plastic housing on CNS (1.4301) mounting bracket. The plasma generator unit is designed to extend the filter stages of the Rieber acs 1100 & 1500 in the basic version (without electrostatic filter).

Dimensions	Weight	Order no.
mm	kg	
140 x 130 x 34	1,0	91140312



HEPA filter unit (acs 1100/1500 d3)

FLEXIBLE HEPA – only suitable for filter combinations without an electrostatic filter. In combination with 91140312. Application: In addition to the Basic or Advanced combination when occasionally frying more intensively and with more fat. For frying and steaming strongly odorous foods, with light smoke development. The HEPA filter is used to extend the Basic and Advanced filter levels.

Dimensions	Weight	Order no.
mm	kg	
936 x 484 x 28	-	91140336



Electostatic filter unit (set)

ADVANCED+ (with additional electrostatic filter insert). Application: For frying and steaming with more fat and increased smoke development. The electrostatic filter unit is designed to extend the filter stages of the Rieber acs 1100 / 1500 units.

Dimensions	Weight	Order no.
mm	kg	
290 x 287 x 267	12,3	91140315



Plasma generator professional (set)

PROFI (with additional plasma filter). In combination with 91140315. Application: For frying and grilling with intensive usage over time. High odor and smoke emission. Plasma generator in plastic housing on CNS (1.4301) mounting bracket. The plasma generator unit is intended for extending the filter stages of the Rieber acs 1100 / 1500 in conjunction with the electrostatic filters (91140315).

Dimensions	Weight	Order no.
mm	kg	
287 x 101 x 34	1,0	91140313

acs 1600 O3 - for 3 varithek® modules with 3-sided edge extraction (d3), plasmatech.& compartments

Mobile cooking station with three-sided perimeter extraction (d3) and two H3 functional cabinet compartments offering hot, cold, and neutral configurations. Multi-stage filtration system: grease, activated-carbon, and pollutant filters, with a removable grease collection tray. Fitted with sneeze and splash guards, and a fully welded mounting niche for varithek® modules: 400 series direct and 1/1 via AST.



More info



acs 1600 O3 - 2x neutral - 3x varithek®

Rated voltage: 3N AC 400 V 50/60 Hz | Filter system: Plasma technology | 3-side edge extraction | Plug type: CEE-Plug 400V/32A | Cable type: plain cable | Cable length: 3000 mm | Protection class: IPX4 | 2 fixed-; 2 swivel castors | Castor Ø: 125 mm

Dimensions	Weight	Connected load	Order no.
mm	kg	kW	
1664 x 850 x 1300	240,0	22,000	91140409



acs 1600 O3 - 2x hot - 3x varithek®

Rated voltage: 3N AC 400 V 50/60 Hz | Filter system: Plasma technology | 3-side edge extraction | Plug type: CEE-Plug 400V/32A | Cable type: plain cable | Cable length: 3000 mm | Protection class: IPX4 | 2 fixed-; 2 swivel castors | Castor Ø: 125 mm

Dimensions	Weight	Connected load	Order no.
mm	kg	kW	
1664 x 850 x 1300	240,0	22,000	91140408



acs 1600 O3 neutral&hot -3x varithek®

Rated voltage: 3N AC 400 V 50/60 Hz | Filter system: Plasma technology | 3-side edge extraction | Plug type: CEE-Plug 400V/32A | Cable type: plain cable | Cable length: 2000 mm | Protection class: IPX4 | 2 fixed-; 2 swivel castors | Castor Ø: 125 mm

Dimensions	Weight	Connected load	Order no.
mm	kg	kW	
1664 x 850 x 1300	240,0	22,000	91140410



acs 1600 O3 - 2x neutral - 3x400V

Rated voltage: 3N AC 400 V 50/60 Hz | Filter system: Plasma technology | 3-side edge extraction | Plug type: CEE-Plug 400V/32A | Cable type: plain cable | Cable length: 3000 mm | Protection class: IPX4 | 2 fixed-; 2 swivel castors | Castor Ø: 125 mm

Dimensions	Weight	Connected load	Order no.
mm	kg	kW	
1664 x 850 x 1300	236,7	22,000	91140434





acs 1600 O3 neutr&cold-3x varithek® R290

Rated voltage: 3N AC 400 V 50/60 Hz | Filter system: Plasma technology | 3-side edge extraction | Plug type: CEE-Plug 400V/32A | Cable type: plain cable | Cable length: 3000 mm | Protection class: IPX4 | 2 fixed-; 2 swivel castors | Castor Ø: 125 mm

Dimensions mm	Weight kg	Connected load kW	Order no.
1664 x 850 x 1300	240,0	22,000	91140461



acs 1600 O3 hot&cold-3xvarithek® R290

Rated voltage: 3N AC 400 V 50/60 Hz | Filter system: Plasma technology | 3-side edge extraction | Plug type: CEE-Plug 400V/32A | Cable type: plain cable | Cable length: 3000 mm | Protection class: IPX4 | 2 fixed-; 2 swivel castors | Castor Ø: 125 mm

Dimensions mm	Weight kg	Connected load kW	Order no.
1664 x 850 x 1300	240,0	22,000	91140459



acs 1600 O3 - 2x cold-3x varithek® R290

Rated voltage: 3N AC 400 V 50/60 Hz | Filter system: Plasma technology | 3-side edge extraction | Plug type: CEE-Plug 400V/32A | Cable type: plain cable | Cable length: 3000 mm | Protection class: IPX4 | 2 swivel-; 2 swivel castors with brakes | Castor Ø: 125 mm

Dimensions mm	Weight kg	Connected load kW	Order no.
1664 x 850 x 1300	240,0	22,000	91140460



acs 1600 O3 - hot&cold - 3x400V R290

Rated voltage: 3N AC 400 V 50/60 Hz | Filter system: Plasma technology | 3-side edge extraction | Plug type: CEE-Plug 400V/32A | Cable type: plain cable | Cable length: 3000 mm | Protection class: IPX4 | 2 fixed-; 2 swivel castors | Castor Ø: 125 mm

Dimensions mm	Weight kg	Connected load kW	Order no.
1664 x 850 x 1300	236,7	22,000	91140462



acs 1600 O3 - 2x cold - 3x400V R290

Rated voltage: 3N AC 400 V 50/60 Hz | Filter system: Plasma technology | 3-side edge extraction | Plug type: CEE-Plug 400V/32A | Cable type: plain cable | Cable length: 3000 mm | Protection class: IPX4 | 2 fixed-; 2 swivel castors | Castor Ø: 125 mm

Dimensions mm	Weight kg	Connected load kW	Order no.
1664 x 850 x 1300	236,7	22,000	91140463

acs accessories

Matching accessories for the acs - for safe and shock-proof transport the transport box made of robust wood, for retracting the acs 1100 with/without attachment. As well as many other functional filter variants, plasma generators or practical spice jar holders. In addition, various cladding options for a stylish look.



More info

adapter odour filter w. carbon filter

Weight

kg

-

Order no.

[61980737](#)

Additional fairing (set) 600 black

For visual enhancement and colour design of the acs unit.

Weight

kg

-

Order no.

[91140332](#)



Additional fairing (set) 1500 black

Weight

kg

-

Order no.

[91140325](#)



Additional fairing (set) 1000 black

For visual enhancement and colour design of the acs unit.

Weight

kg

-

Order no.

[91140327](#)



Additional panelling (set) 1100 black

For visual enhancement and colour design of the acs unit.

Weight

kg

-

Order no.

[91140316](#)



Panelling black 3-sides ACS 1600 O3

Weight	Order no.
kg	
-	91140304

Shelf - hinged guest side, acs 1000ec

Weight	Order no.
kg	
4,0	91140208

Spice shaker left / right 3x GN 1/9



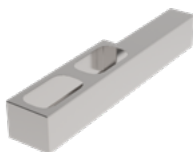
Weight	Order no.
kg	
-	91140255

Spice shaker left / right 2x GN 2/8



Weight	Order no.
kg	
-	91140262

Holder for spice pans, left 2x1/9



Weight	Order no.
kg	
-	91140318

Holder for spice pans, right 2x1/9



Weight	Order no.
kg	
-	91140319

Transport box - acs 1100 with attachment



Weight	Order no.
kg	
97,0	91140310

Transport-Box for acs 1100 without top



Weight	Order no.
kg	
63,0	91140311

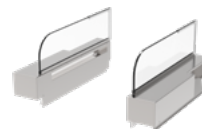
Extraction unit (set) high,w.attachment

Weight
kg

-

Order no.

[91140340](#)



Extract unit height 1100, without attach

Weight
kg

-

Order no.

[91140343](#)



Extract unit height 1500, without attach

Weight
kg

-

Order no.

[91140344](#)



varithek®

Front cooking modules

Program Overview

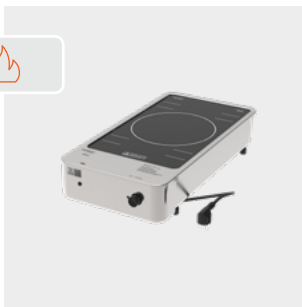


varithek® GN 1/1 module with ceramic hob - for keeping warm

Module for keeping warm at the exact temperature, with infinitely variable & energy-saving ceramic hob (0-800W) with 9 programme levels, recessed for safe operation. Stainless steel housing, with transport-safe, retractable rotary switch. Exact insertion in AST / EST or in GN-port, usually with thermoplates® cooking pots. Splash-proof IPX4. Rated voltage 1N AC 230V 50/60Hz.



Energy-saving ceramic hob (0-800W) with 9 programme levels



varithek® GN 1/1 module with induction hob - for cooking

Module with electronically controllable induction ceramic hob (full-surface / round: Ø230mm surface / 2x square: 220x180mm each), controllable with selectable levels 0-9, recessed for safe operation. With ventilated high-performance induction generator. Exact insertion into AST/EST or GN-port, in use with thermoplates® cooking pots. Splash-proof IPX4. Rated voltage 1N AC 230V 50/60Hz.



Induction ceramic hob (full-surface / round: Ø230mm surface / 2x square: 220x180mm each), controll. w. select. levels 0-9. Ventilated high-performance induc. generator

SWISS | I | PLY



varithek® GN 1/1 module with SWISS-PLY multilayer plate - for grilling

Module with full-surface SWISS-PLY multi-layer material grill plate (280x480mm) for direct grilling, 8mm high edge & non-stick effect. Heat distribution evenly into the corners. Retractable electronically controlled power regulator up to 250°C. Grease drain & plug, drainable grease drip tray. Slide into AST/EST or GN port. Splash-proof IPX4. Rated voltage 1N AC 230V 50/60Hz.



SWISS-PLY multi-layer material grill plate (280x480mm) infinitely variable up to 250°C, for direct grilling, very fast & even heat distribution right into the corners



varithek® 400 module with induction field - for cooking

Module with round induction ceramic hob, Ø250mm surface, electronically controllable via power regulator with 11 selectable levels. With ventilated microprocessor-controlled high-performance induction generator. For precise direct setting in acs-Frontcooking / as table-top unit on worktop. Splash-proof to IPX4.



Round induction ceramic hob, Ø250mm surface, controllable with 11 selectable levels. With ventilated microprocessor-controlled high-performance induction generator

Digital HACCP documentation - safe & time-saving

Digital HACCP documentation with the CHECK HACCP system. App temperature measurement with Bluetooth-capable core temperature sensor. From goods receipt, production to output. Paper & complete HACCP in real time, visible everywhere in your dashboard.



Core temperature sensor - can be retrofitted at any time - order no. 94 01 01 05

varithek® 400 module with induction cuvette - for wokking



Module with round Ceran cuvette Ø300mm, for safe insertion of a round wok pan, for stepless wok with 11 power levels. With ventilated microprocessor-controlled high-performance induction generator. For precise direct setting in acs-Frontcooking / as table-top unit on worktop. Splash-proof to IPX4.

- + Ceran cuvette Ø300mm, for round wok pan, stepless wok with 11 power levels. With ventilated microprocessor-controlled high-performance induction generator**

varithek® 400 module as pasta stove & deep fryer



Pasta fryer module, seamlessly welded GN basin 1/1, 200mm with SWISS-PLY multilayer base, powerful heating field underneath. Ventilated, safety drain cock, integrated temperature sensor adjustable +/-1°C. In use with GN hook-in sets in each case. For direct placement in acs front cooking/as table-top unit on worktop. Splash-proof to IPX4. Rated voltage 3N AC 400 V 50/60 Hz.

- + Hygienic seamlessly welded GN basin with SWISS-PLY multilayer base + Powerful heating field, adjustable +/-1°C**

SWISS||PLY

varithek® 400 module with SWISS-PLY multilayer panel - for grilling



Module with full-surface SWISS-PLY multi-layer grill plate, for direct grilling with non-stick effect. Heat distribution evenly into the corners. Infinitely variable up to 250°C. With grease drain & plug and drainable grease drip tray. For direct placement in acs front cooking/as table-top unit on worktop. Splash-proof. IPX4. Rated voltage 3N AC 400V 50/60Hz.

- + SWISS-PLY multi-layer material grill plate infinitely variable up to 250°C, for direct grilling, very fast & even heat distribution right into the corners**

varithek® GN 1/1 module with ceramic hob - for keeping warm

Module for keeping warm at the exact temperature, with infinitely variable & energy-saving ceramic hob (0-800W) with 9 programme levels, recessed for safe operation. Stainless steel housing, with transport-safe, retractable rotary switch. Exact insertion in AST / EST or in GN-port, usually with thermoplates® cooking pots. Splash-proof IPX4. Rated voltage 1N AC 230V 50/60Hz.



More info

varithek® 1/1-ch-800

Field type: full-surface | Work surface: Ceran | Connector type: Safety switch (type F)



Dimensions mm	Weight kg	Connected load kW	Cable length mm	Order no.
325 x 620 x 63	6,6	0,800	1.000	91010150
325 x 620 x 63	6,8	0,800	2.500	91010153

varithek® 1/1-ck-2800

Field type: full-surface | Work surface: Ceran | Connector type: Safety switch (type F)



Dimensions mm	Weight kg	Connected load kW	Cable length mm	Order no.
325 x 620 x 82	6,9	2,800	1.000	91010151
325 x 620 x 82	6,9	2,800	2.500	91010154

varithek® 1/1-ck-3400-2Z-round

Field type: 2-zone | Work surface: Ceran | Connector type: Safety switch (type F)



Dimensions mm	Weight kg	Connected load kW	Cable length mm	Order no.
325 x 620 x 81	7,0	3,400	1.000	91010152
325 x 620 x 81	7,0	3,400	2.500	91010155

varithek® GN 1/1 module with induction hob - for cooking

Module with electronically controllable induction ceramic hob (full-surface / round: Ø230mm surface / 2x square: 220x180mm each), controllable with selectable levels 0-9, recessed for safe operation. With ventilated high-performance induction generator. Exact insertion into AST/EST or GN-port, in use with thermoplates® cooking pots. Splash-proof IPX4. Rated voltage 1N AC 230V 50/60Hz.



More info



varithek® 1/1-ik-3500

Field type: full-surface | Work surface: induction | Connector type: Safety switch (type F)

Dimensions mm	Weight kg	Connected load kW	Cable length mm	Order no.
325 x 620 x 141	16,7	3,500	1.000	91010253
325 x 620 x 141	16,9	3,500	2.500	91010256



varithek® 1/1-ik-3500-round

Field type: 1-zone | Work surface: induction | Connector type: Safety switch (type F)

Dimensions mm	Weight kg	Connected load kW	Cable length mm	Order no.
325 x 620 x 141	14,1	3,500	1.000	91010254
325 x 620 x 141	14,4	3,500	2.500	91010257



varithek® 1/1-ik-3600-2Z-square

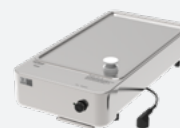
Field type: 2-zone | Work surface: induction | Connector type: Safety switch (type F)

Dimensions mm	Weight kg	Connected load kW	Cable length mm	Order no.
325 x 620 x 81	9,3	3,600	1.000	91010259
325 x 620 x 81	9,5	3,600	2.500	91010258



varithek® GN 1/1 module with SWISS-PLY multilayer plate - for grilling

Module with full-surface SWISS-PLY multi-layer material grill plate (280x480mm) for direct grilling, 8mm high edge & non-stick effect. Heat distribution evenly into the corners. Retractable electronically controlled power regulator up to 250°C. Grease drain & plug, drainable grease drip tray. Slide into AST/EST or GN port. Splash-proof IPX4. Rated voltage 1N AC 230V 50/60Hz.



More info

varithek® 1/1-gp-3400-SP

Field type: full-surface | Work surface: SWISS-PLY | Connector type: Safety switch (type F)



Dimensions mm	Weight kg	Connected load kW	Cable length mm	Order no.
325 x 620 x 144	14,6	3,400	1.000	91030160
325 x 620 x 144	15,0	3,400	2.500	91030162



varithek® 400 module with induction field - for cooking

Module with round induction ceramic hob, Ø250mm surface, electronically controllable via power regulator with 11 selectable levels. With ventilated microprocessor-controlled high-performance induction generator. For precise direct setting in acs-Frontcooking / as table-top unit on worktop. Splash-proof to IPX4.



More info



varithek® 400-ik-3500

Rated voltage: 1N AC 230 V 50/60 Hz | Field type: 1-zone | Work surface: induction | Connector type: Safety switch (type F)

Dimensions mm	Weight kg	Connected load kW	Cable length mm	Order no.
400 x 670 x 138	17,9	3,500	1.000	91010270
400 x 670 x 138	17,9	3,500	2.500	91010271



varithek® 400-ik-5000

Rated voltage: 3N AC 400 V 50/60 Hz | Field type: 1-zone | Work surface: induction | Connector type: CEE-Plug 400V/16A

Dimensions mm	Weight kg	Connected load kW	Cable length mm	Order no.
400 x 670 x 138	17,5	5,000	1.000	91010272
400 x 670 x 138	17,5	5,000	2.500	91010273



varithek® 400 module with induction cuvette - for wokking

Module with round Ceran cuvette Ø300mm, for safe insertion of a round wok pan, for stepless wok with 11 power levels. With ventilated microprocessor-controlled high-performance induction generator. For precise direct setting in acs-Frontcooking / as table-top unit on worktop. Splash-proof to IPX4.



More info



varithek® 400-iw-3000

Rated voltage: 1N AC 230 V 50/60 Hz | Field type: 1-zone | Work surface: Ceran | Connector type: Safety switch (type F)

Dimensions mm	Weight kg	Connected load kW	Cable length mm	Order no.
400 x 656 x 200	19,0	3,000	1.000	91040374
400 x 656 x 200	19,0	3,000	2.500	91040375



varithek® 400-iw-3500

Rated voltage: 1N AC 230 V 50/60 Hz | Field type: 1-zone | Work surface: Ceran | Connector type: Safety switch (type F)

Dimensions mm	Weight kg	Connected load kW	Cable length mm	Order no.
400 x 656 x 200	19,0	3,500	1.000	91040370
400 x 656 x 200	19,0	3,500	2.500	91040371



varithek® 400-iw-5000

Rated voltage: 3N AC 400 V 50/60 Hz | Field type: 1-zone | Work surface: Ceran | Connector type: CEE-Plug 400V/16A

Dimensions mm	Weight kg	Connected load kW	Cable length mm	Order no.
400 x 656 x 200	21,0	5,000	1.000	91040372
400 x 656 x 200	21,0	5,000	2.500	91040373

varithek® 400 module as pasta stove & deep fryer

Pasta fryer module, seamlessly welded GN basin 1/1, 200mm with SWISS-PLY multilayer base, powerful heating field underneath. Ventilated, safety drain cock, integrated temperature sensor adjustable $\pm 1^{\circ}\text{C}$. In use with GN hook-in sets in each case. For direct placement in acs front cooking/as table-top unit on worktop. Splash-proof to IPX4. Rated voltage 3N AC 400 V 50/60 Hz.



More info



varithek® 400-pf-5000-SP

Field type: full-surface | Work surface: SWISS-PLY | Connector type: CEE-Plug 400V/16A

Dimensions mm	Weight kg	Connected load kW	Cable length mm	Order no.
400 x 708 x 212	18,5	8,000	1.000	91100172
400 x 708 x 212	18,5	8,000	2.500	91100173



varithek® 400 module with SWISS-PLY multilayer panel - for grilling

Module with full-surface SWISS-PLY multi-layer grill plate, for direct grilling with non-stick effect. Heat distribution evenly into the corners. Infinitely variable up to 250°C. With grease drain & plug and drainable grease drip tray. For direct placement in acs front cooking/as table-top unit on worktop. Splash-proof. IPX4. Rated voltage 3N AC 400V 50/60Hz.



More info



varithek® 400-gp-4800-SP

Field type: full-surface | Work surface: SWISS-PLY | Connector type: CEE-Plug 400V/16A

Dimensions mm	Weight kg	Connected load kW	Cable length mm	Order no.
400 x 662 x 212	26,5	4,800	1.000	91030172
400 x 662 x 212	22,0	4,800	2.500	91030173



varithek® 400-gp-5000-SP-i

Field type: full-surface | Work surface: SWISS-PLY Induction | Connector type: CEE-Plug 400V/16A

Dimensions mm	Weight kg	Connected load kW	Cable length mm	Order no.
400 x 662 x 212	35,0	5,000	1.000	91030170
400 x 662 x 212	35,0	5,000	2.500	91030171



varithek® 800-gp-9600-SP

Field type: full-surface | Work surface: SWISS-PLY | Connector type: CEE-Plug 400V/16A

Dimensions mm	Weight kg	Connected load kW	Cable length mm	Order no.
800 x 662 x 212	41,0	9,600	1.000	91030176
800 x 662 x 212	43,3	9,600	2.500	91030177



varithek® 800-gp-10000-SP-i

Field type: full-surface | Work surface: SWISS-PLY Induction | Connector type: CEE-Plug 400V/16A

Dimensions mm	Weight kg	Connected load kW	Cable length mm	Order no.
800 x 662 x 212	41,0	10,000	1.000	91030174
800 x 662 x 212	41,0	10,000	2.500	91030175

varithek® Modules Accessories

Matching accessories for the varithek® modules - such as various cooking attachments/utensils, for special preparation methods such as wok, pasta, deep fry, etc. Suitable cleaning scrapers for glass cooktops or specifically for all grill plates, for scratch-free removal of all dirt. Or for hygienic clean use different splash guard variants.



More info

Frying stand set varithek® 1/1-ik-3500

Frying gantry set for functional configuration of the varithek® 1/1-ik-3500 module (full-surface induction) - for the preparations of crispy deep-fried food (1x GN 1/1 container, 200 mm deep with a SWISS-PLY multi-layer base and drop handles, 1x support frame, 2x GN 1/3 frying baskets).

Weight

kg

-

Order no.

91100109



Frying set - varithek® 400-pf-8000-SP

Frying set for functional configuration of the varithek® 400-pf-5000-SP module - for the preparations of crispy deep-fried food (1x support frame, 2x GN 1/3 frying baskets).

Weight

kg

2,6

Order no.

91100107



Pasta stand set varithek® 1/1-ik-3500

Pasta gantry set for functional configuration of the varithek® 1/1-ik-3500 module (full-surface induction) - for the preparations of fresh pasta (1x GN 1/1 container, 200 mm deep with a SWISS-PLY multi-layer base and drop handles, 1x support frame, 2x GN 1/3 pasta baskets, 2x GN 1/6 pasta baskets).

Weight

kg

-

Order no.

91100108



Pasta set - varithek® 400-pf-8000-SP

Pasta set for functional configuration of the varithek® 400-pf-5000-SP module - for the preparations of fresh pasta (1x support frame, 2x GN 1/3 pasta baskets, 2x GN 1/6 pasta baskets).

Weight

kg

3,5

Order no.

91100106



Cleaning scraper made of polyamide

Scraper for cleaning all varithek® 400, 800 and 1/1 grill plates.

Weight

kg

0,1

Order no.

[91030332](#)

Ceran glass cleaning scraper

Scraper for cleaning all varithek® hobs with a 400 and 1/1 glass surface.

Weight

kg

0,1

Order no.

[91020301](#)

Splash guard-varithek® 800-gp

Splash guard for the varithek® 800 grill plate, for use as a table-top variant - for a clean and hygienic worktop (not required for use in the acs®).



Weight

kg

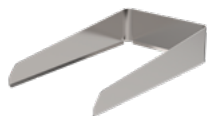
1,9

Order no.

[91030353](#)

Splash guard - varithek® 1/1-gp-3400-SP

Splash guard for the varithek® 1/1 grill plate, for use as a table-top variant - for a clean and hygienic worktop (not required for use in the acs®).



Weight

kg

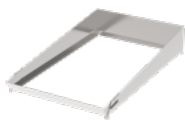
1,3

Order no.

[91030346](#)

Splash guard - varithek® 400-gp

Splash guard for the varithek® 400 grill plate, for use as a table-top variant - for a clean and hygienic worktop (not required for use in the acs®).



Weight

kg

1,5

Order no.

[91030351](#)

Adj. foot extension set (GP400/GP800)

Adjustable foot extension set for the varithek® 400 / 800 grill plate, for integrating a deeper GN 2/4 grease collection tray (40 mm), for longer operating times without changing the grease collection tray.



Weight

kg

0,0

Order no.

[91030349](#)

Wok Aufsatz - varithek®400-ik

Wok gantry for varithek® 400 cooking modules - especially for wok-based cooking with a matching round wok pan.

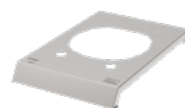
Weight

kg

2,5

Order no.

[91030352](#)



Wok stand - for varithek® 1/1-ik-3500

Wok gantry for varithek® 1/1 cooking modules - especially for wok-based cooking with a matching round wok pan.

Weight

kg

2,4

Order no.

[91040106](#)



Wok 8.5l base flat - varithek®

Wok pan with a flat base for direct use on varithek® 400 or 1/1 cooking modules.

Weight

kg

2,2

Order no.

[91040204](#)

Wok 6l base round - varithek®

Wok pan with a round base for use with a matching wok gantry and varithek® 400 or 1/1 cooking modules.

Weight

kg

1,7

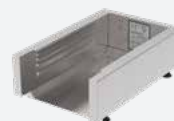
Order no.

[91040203](#)



varithek® GN 1/1 system carrier AST - for acs / fixtures / as table top

The stable tabletop system support with/without front flap (double folding) made of stainless steel, double-walled with base. Hygienically embossed beads in the inner jacket, with optimally balanced bead spacing, for precise insertion of all varithek® 1/1 cooking modules. For installation in serving systems, such as the varithek® acs, for placement in niches / as table-top version. Suitable for all 230 V varithek units.



More info



Dimensions mm	Versions	max. GN size	Order no.
400 x 620 x 200	for ACS 1100d3, 1500d3, 1600o3	1/1 150	91050107
400 x 716 x 260	with front flap	1/1 200	91050102
400 x 680 x 260	without front flap	1/1 200	91050104



varithek® GN 1/1 system carrier EST - for varithek® buffet / fixtures / as table top

Built-in system support, with double hinged front flap & base. Beading embossed in the inner jacket with optimum spacing, for insertion of varithek® 1/1 cooking modules. For insertion into serving units (varithek®Buffet) / for hanging into cover cut-out. Per EST left 1x 230V socket, ready to plug in, with 2m supply cable, for fixed connection by customer. Connected load per system support: 3,500 W. Rated voltage 1N AC 230V 50/60Hz.



More info



Dimensions mm	system modules count	Cover cut-out	Order no.
465 x 736 x 305	1	430 x 704 mm	91050201
890 x 736 x 305	2	855 x 704 mm	91050202
1315 x 736 x 305	3	1.280 x 704 mm	91050203
1740 x 736 x 305	4	1.705 x 704 mm	91050204
2165 x 736 x 305	5	2.130 x 704 mm	91050205



varithek® GN 1/1 system carrier GN-port - for catering kitchen / built-in / as countertop

The mobile system support made of stainless steel. In the inner jacket registers with optimal distances, for insertion of varithek® 1/1 cooking modules. For insertion into serving systems (varithek® Buffet), as tabletop variant, individually or placed on thermoport®, combined with connecting elements to form catering kitchen units. For GN containers with max. 150mm depth.



More info



Dimensions

mm

350 x 555 x 160

Order no.

91050301



