

5.

Meal distribution

Individually tailored options for perfect meal distribution systems. The Regiostation is a versatile unit for transport, distribution, and regeneration – featuring separate cooling and regeneration compartments for complete meal service. It offers flexible, automatic control of holding, regeneration, and cooling cycles.

The stainless steel delivery trolley with an electrically heated GN 1/1 holding basin ensures safe transport and efficient food service – with both wet and dry heating options.

The food transport trolley with heated compartments allows for secure transport, hot and cold holding, and serving of food within the GN system.

ZUB, STW, Regio & Dispensing trolley

Program Overview



delivery trolley - ZUB heated - with warming tubs

Stainless steel ladle trolley with deep-drawn, seamlessly welded-in GN 1/1 warming tray at the top, can be heated wet & dry (significant energy savings when dry), with drain tap, separately adjustable from +30°C to 110°C. Cover embodied on all sides, handle on front/longitudinal side, insulated on all sides, stainless steel shelf welded in at bottom with 4 butt corners, stainless steel castors. Rated voltage 1N AC 230V 50Hz.



Our GN basins can be heated wet & dry. Advantages of dry heating: energy saving, no calcification, better hygiene, faster cleaning & handling



delivery trolley - ZUB cooled - with cooling tubs

Stainless steel ladle trolley with deep-drawn, seamlessly welded-in GN 1/1 cooling trays at the top, cooling machine adjustable from +2°C to 10°C below. Cover embodied on all sides, safety push handle at front, insulated on all sides, with drain cock, welded-in stainless steel shelf with 4 butt corners at bottom, stainless steel castors. VT -10°C, rated voltage 1N AC 230V 50Hz.



delivery trolley - ZUB heated - with warming tubs for daycare & schools

Stainless steel ladle trolley, child-friendly working height of 750 mm, deep-drawn, seamlessly welded GN 1/1 warming tray at the top, can be heated wet & dry (significant energy savings when dry) with drain tap, separately adjustable +30 to 110 °C, insulated on all sides. Top incl. sneeze guard & light, cover cranked on all sides, handle on front side, 2x shelf on long side, closed cabinet space with 4 butt corners, rust-proof castors. Rated voltage 1N AC 230V 50 Hz.



Optimal operation for small children, at working height 750mm. Dry heatable for energy saving, no calcification, better hygiene, cleaning & handling



Food transport trolley - STW with cabinet compartment heated - without warming trays

Stainless steel serving trolley with smooth top cover and all-round gallery. Bottom 2 or 3 heated GN 1/1 compartments in H3 (IPX5), separately adjustable +30°C to 110°C, 14 deep-drawn bead pairs each. Doors double-walled insulated & self-closing, transport lock. Safety push handle at front, 2 fixed & 2 swivel castors with double stops. Rated voltage 1N AC 230V 50/60Hz.



Auto prog. function can be stored for a 100% guarantee of success. Usable w/o high volt. curr. (230V), structural measures, extractor hood, water connections, etc.

Digital HACCP documentation - safe & time-saving

Digital HACCP documentation with the CHECK HACCP system. App temperature measurement with Bluetooth-capable core temperature sensor. From goods receipt, production to output. Paper & complete HACCP in real time, visible everywhere in your dashboard.



Core temperature sensor - can be retrofitted at any time - order no. 94 01 01 05



Food transport trolley - STW with cabinet compartment 1xheated, 1xcooled & warming trays

Top 3 deep-drawn GN 1/1 warming trays wet & dry heatable. Bottom 1xheated & 1xcooled GN 1/1 cabinet compartment in H3 (IPX5). Hot: +30°C to 90°C, cold: +2°C to +10°C, 8 deep-drawn bead pairs each. Doors double-walled insulated, self-closing, transport lock. Safety push handle at front, 2 fixed & 2 swivel castors with double stops. Rated voltage 1N AC 230V 50/60Hz.

- + Our GN basins can be heated wet & dry. Advantages of dry heating: energy saving, no calcification, better hygiene, faster cleaning & handling**



Regystation with 2 large compartments in 230/400V

Various compartment combinations for keeping warm/cool & regenerating, bottom 2 compartments each max. 7x GN 1/1 65mm. Type 3 & 5 neutral drawer in the centre. Heat/light bridge, sneeze guard & 3-sided gallery, removable side controls. Cool: +2°C to +14°C. Regenerating: up to +170°C. Rated voltage 1N AC 230V 50Hz / 3N AC 400V 50Hz.

- + With intelligent electronic control, 7-day programming possible in accordance with meal plans, also for individual portions for diets**



Regystation with 1 large compartment or 2 small compartments in 230/400V

Various compartment combinations for keeping warm/cool & regenerating, bottom 1 compartment max. 7x GN 1/1 65mm or 2 small compartments. Heat/light bridge, sneeze guard & 3-sided gallery, removable side control (not with type 13). Cool: +2°C to +14°C. Regenerating: up to +170°C. Rated voltage 1N AC 230V 50Hz / 3N AC 400V 50Hz.

- + With intelligent electronic control, 7-day programming possible in accordance with meal plans, also for individual portions for diets**



Serving trolley for breakfast & dinner stainless steel

Neutral trolley available closed with deep-drawn inner muffle (H3) of the compartments or in open version. Top with hygienic stainless steel cover, plastic castors, 4 bumper corners, 2 robust push handles. For transporting & serving breakfast and / or evening meal, can be used as an alternative to the tray system.

delivery trolley - ZUB heated - with warming tubs

Stainless steel ladle trolley with deep-drawn, seamlessly welded-in GN 1/1 warming tray at the top, can be heated wet & dry (significant energy savings when dry), with drain tap, separately adjustable from +30°C to 110°C. Cover embodied on all sides, handle on front/longitudinal side, insulated on all sides, stainless steel shelf welded in at bottom with 4 butt corners, stainless steel castors. Rated voltage 1N AC 230V 50Hz.



More info



ZUB 1 well

Capacity: 1 x GN 1/1, 200 mm | Plug type: Safety switch (type F) | Cable type: spiral cable | Cable length: 2500 mm | Protection type: IPX4 | Splashproof | 2 swivel-; 2 swivel castors with brakes | Castor Ø: 125 mm | 4 corner bumpers

Dimensions mm	Weight kg	Connected load kW	Push handle	Order no.
715 x 475 x 900	22,9	0,470	short side	88160101



ZUB 2 wells

Capacity: 2 x GN 1/1, 200 mm | Plug type: Safety switch (type F) | Cable type: spiral cable | Cable length: 2500 mm | Protection type: IPX4 | Splashproof | 2 swivel-; 2 swivel castors with brakes | Castor Ø: 125 mm | 4 corner bumpers

Dimensions mm	Weight kg	Connected load kW	Push handle	Order no.
816 x 677 x 900	33,2	0,940	short side	88160201
816 x 677 x 900	33,2	0,940	long side	88160203



ZUB 3 wells

Capacity: 3 x GN 1/1, 200 mm | Plug type: Safety switch (type F) | Cable type: spiral cable | Cable length: 2500 mm | Protection type: IPX4 | Splashproof | 2 swivel-; 2 swivel castors with brakes | Castor Ø: 125 mm | 4 corner bumpers

Dimensions mm	Weight kg	Connected load kW	Push handle	Order no.
1185 x 678 x 900	44,2	1,410	short side	88160301
1185 x 678 x 900	44,2	1,410	long side	88160303



ZUB 4 wells

Capacity: 4 x GN 1/1, 200 mm | Plug type: Safety switch (type F) | Cable type: spiral cable | Cable length: 2500 mm | Protection type: IPX4 | Splashproof | 2 swivel-; 2 swivel castors with brakes | Castor Ø: 125 mm | 4 corner bumpers

Dimensions mm	Weight kg	Connected load kW	Push handle	Order no.
1520 x 678 x 900	54,9	1,880	short side	88160401
1520 x 717 x 900	56,9	3,060	long side	88160403

delivery trolley - ZUB cooled - with cooling tubs

Stainless steel ladle trolley with deep-drawn, seamlessly welded-in GN 1/1 cooling trays at the top, cooling machine adjustable from +2°C to 10°C below. Cover embodied on all sides, safety push handle at front, insulated on all sides, with drain cock, welded-in stainless steel shelf with 4 butt corners at bottom, stainless steel castors. VT -10°C, rated voltage 1N AC 230V 50Hz.



More info



ZUB 2-wells - refrigerated R290

Capacity: 2 x GN 1/1, 200 mm | Plug type: Safety switch (type F) | Cable type: spiral cable | Cable length: 2500 mm | Protection type: IPX0 | Splashproof | 2 swivel-; 2 swivel castors with brakes | Castor Ø: 125 mm | 4 corner bumpers

Dimensions mm	Weight kg	Connected load kW	Refrigerant	Order no.
854 x 665 x 900	55,0	0,265	R290	88160804



ZUB 3-wells - refrigerated R290

Capacity: 3 x GN 1/1, 200 mm | Plug type: Safety switch (type F) | Cable type: spiral cable | Cable length: 2500 mm | Protection type: IPX0 | Splashproof | 2 swivel-; 2 swivel castors with brakes | Castor Ø: 125 mm | 4 corner bumpers

Dimensions mm	Weight kg	Connected load kW	Refrigerant	Order no.
1190 x 665 x 900	62,0	0,265	R290	88160805



ZUB 4 wells - refrigerated R290

Capacity: 4 x GN 1/1, 200 mm | Plug type: Safety switch (type F) | Cable type: spiral cable | Cable length: 2500 mm | Protection type: IPX0 | Splashproof | 2 swivel-; 2 swivel castors with brakes | Castor Ø: 125 mm | 4 corner bumpers

Dimensions mm	Weight kg	Connected load kW	Refrigerant	Order no.
1507 x 665 x 900	75,0	0,265	R290	88160806



delivery trolley - ZUB heated - with warming tubs for daycare & schools

Stainless steel ladle trolley, child-friendly working height of 750 mm, deep-drawn, seamlessly welded GN 1/1 warming tray at the top, can be heated wet & dry (significant energy savings when dry) with drain tap, separately adjustable +30 to 110 °C, insulated on all sides. Top incl. sneeze guard & light, cover cranked on all sides, handle on front side, 2x shelf on long side, closed cabinet space with 4 butt corners, rustproof castors. Rated voltage 1N AC 230V 50 Hz.



More info



Children buffet trolley 2-h=750 / 800 mm

Capacity: 2 x GN 1/1, 200 mm | Plug type: Safety switch (type F) | Cable type: spiral cable | Cable length: 2500 mm | Protection type: | Splashproof | 2 swivel-; 2 swivel castors with brakes | Castor Ø: 100 mm | 4 corner bumpers

Dimensions mm	Weight kg	Connected load kW	Push handle	Order no.
818 x 679 x 1150	49,8	0,940	short side	88160212



Children buffet trolley 3-h=750 / 800 mm

Capacity: 3 x GN 1/1, 200 mm | Plug type: Safety switch (type F) | Cable type: spiral cable | Cable length: 2500 mm | Protection type: | Splashproof | 2 swivel-; 2 swivel castors with brakes | Castor Ø: 100 mm | 4 corner bumpers

Dimensions mm	Weight kg	Connected load kW	Push handle	Order no.
1187 x 679 x 1150	63,5	1,420	short side	88160312



Children buffet trolley 4- h=750 / 800 m

Capacity: 4 x GN 1/1, 200 mm | Plug type: Safety switch (type F) | Cable type: spiral cable | Cable length: 2500 mm | Protection type: | Splashproof | 2 swivel-; 2 swivel castors with brakes | Castor Ø: 100 mm | 4 corner bumpers

Dimensions mm	Weight kg	Connected load kW	Push handle	Order no.
1522 x 679 x 1150	78,0	1,900	short side	88160412

Delivery trolley accessories

Matching accessories for the ZUB feeder trolleys - such as various attachment variants & combinations of light and/or thermal bridges. Fold-down shelf variants (longitudinal/frontal), as well as practical drain screens for the trays.



More info

Gantry light/heat - ZUB 4

Matching gantry with a lighting/thermal bridge for all ZUB and Bain Marie 4 models - with a germ guard on the guest side, adjustable in 4 ways.

Weight

kg

15,0

Order no.

[88161002](#)



Gantry light/heat - Norm trolley & ZUB 3

Matching gantry with a lighting/thermal bridge for all STW and ZUB 3 models, without a sliding/hinged lid.

Weight

kg

15,5

Order no.

[88132048](#)



Gantry light/heat, Norm trolley & ZUB 2

Matching gantry with a lighting/thermal bridge for all STW and ZUB 2 models, without a sliding/hinged lid.

Weight

kg

8,0

Order no.

[88132046](#)



Gantry light..- ZUB/bain-marie 4

Matching gantry with a lighting bridge for all ZUB and Bain Marie 4 models - with a germ guard on the guest side, adjustable in 4 ways.

Weight

kg

15,0

Order no.

[88161001](#)



Gantry light - Norm trolley & ZUB 3

Matching gantry with a lighting bridge for all STW and ZUB 3 models, without a sliding/hinged lid.

Weight

kg

13,5

Order no.

[88132047](#)





Gantry light - Norm trolley & ZUB 2

Matching gantry with a lighting bridge for all STW and ZUB 2 models, without a sliding/hinged lid.

Weight	Order no.
kg	
8,0	88132045



HING.SHELF F.LONG SIDE OF ZUB 4

Weight	Order no.
kg	
5,0	58161704



HING.SHELF F.LONG SIDE OF ZUB 3

Weight	Order no.
kg	
3,0	58161703



HING.SHELF COMPL.F.LONG SIDE OF ZUB 2

Weight	Order no.
kg	
3,0	58161702



HING.SHELF COMPL. F.NARROW SIDE OF ZUB 3

Weight	Order no.
kg	
2,0	58161701



HING.SHELF COMPL.F.ZUB 1,2,3,4 PARTS

Weight	Order no.
kg	
1,2	58162401



basket strainer in s/s for drainpipe

Weight	Order no.
kg	
0,0	57010301

Food transport trolley - STW with cabinet compartment heated - without warming trays

Stainless steel serving trolley with smooth top cover and all-round gallery. Bottom 2 or 3 heated GN 1/1 compartments in H3 (IPX5), separately adjustable +30°C to 110°C, 14 deep-drawn bead pairs each. Doors double-walled insulated & self-closing, transport lock. Safety push handle at front, 2 fixed & 2 swivel castors with double stops. Rated voltage 1N AC 230V 50/60Hz.



More info



Trolley Norm II-0, heated

Connector type: Safety switch (type F) | Cable type: spiral cable | Cable length: 2000 mm | Protection type: IPX4 | Jet-proof | 2 fixed-; 2 swivel castors | Castor Ø: 125 mm | 4 corner bumpers

Dimensions	Weight	Connected load	Order no.
mm	kg	kW	
905 x 680 x 900	55,0	0,940	88130323



Trolley Norm II-2, heated

Connector type: Safety switch (type F) | Cable type: spiral cable | Cable length: 2000 mm | Protection type: IPX4 | Jet-proof | 2 fixed-; 2 swivel castors | Castor Ø: 125 mm | 4 corner bumpers

Dimensions	Weight	Connected load	Order no.
mm	kg	kW	
905 x 680 x 900	60,0	1,880	88130623



Trolley Norm III - 0, heated

Connector type: Safety switch (type F) | Cable type: spiral cable | Cable length: 2000 mm | Protection type: IPX4 | Jet-proof | 2 fixed-; 2 swivel castors | Castor Ø: 125 mm | 4 corner bumpers

Dimensions	Weight	Connected load	Order no.
mm	kg	kW	
1314 x 680 x 900	81,7	1,410	88131023



Trolley Norm III - 3, heated

Connector type: Safety switch (type F) | Cable type: spiral cable | Cable length: 2000 mm | Protection type: IPX4 | Jet-proof | 2 fixed-; 2 swivel castors | Castor Ø: 125 mm | 4 corner bumpers

Dimensions	Weight	Connected load	Order no.
mm	kg	kW	
1314 x 680 x 900	84,7	2,820	88131423



Food transport trolley - STW with cabinet compartment 1xheated, 1xcooled & warming trays

Top 3 deep-drawn GN 1/1 warming trays wet & dry heatable. Bottom 1xheated & 1xcooled GN 1/1 cabinet compartment in H3 (IPX5). Hot: +30°C to 90°C, cold: +2°C to +10°C, 8 deep-drawn bead pairs each. Doors double-walled insulated, self-closing, transport lock. Safety push handle at front, 2 fixed & 2 swivel castors with double stops. Rated voltage 1N AC 230V 50/60Hz.



More info



Trolley Norm III-1-1K heat., refig.R290

Connector type: Safety switch (type F) | Cable type: spiral cable | Cable length: 2000 mm | Protection type: IPX4 | Splashproof | 2 fixed-; 2 swivel castors | Castor Ø: 125 mm | 4 corner bumpers

Dimensions	Weight	Connected load	Refrigerant	Order no.
mm	kg	kW		
1314 x 680 x 900	89,7	2,820	R290	88131825



STW Accessories

Suitable accessories for the STW food transport trolleys, such as various top versions & combinations of light and/or thermal bridges. Appropriate folding or sliding lid options, an extension with coupling & drawbar or additional fold-down footprint, as well as digital thermometers or practical drainage sieves for the tubs. Up to GN cooling or heating pellets for additional passive cold / hot holding for sliding onto the support ledges in the cabinet space below. Can also be equipped with all-round impact protection for perfect protection.



More info

Gantry light/heat, Norm trolley & ZUB 2

Matching gantry with a lighting/thermal bridge for all STW and ZUB 2 models, without a sliding/hinged lid.

Weight

kg

8,0

Order no.

[88132046](#)



Gantry light/heat - Norm trolley & ZUB 3

Matching gantry with a lighting/thermal bridge for all STW and ZUB 3 models, without a sliding/hinged lid.

Weight

kg

15,5

Order no.

[88132048](#)



Gantry light - Norm trolley & ZUB 2

Matching gantry with a lighting bridge for all STW and ZUB 2 models, without a sliding/hinged lid.

Weight

kg

8,0

Order no.

[88132045](#)



Gantry light - Norm trolley & ZUB 3

Matching gantry with a lighting bridge for all STW and ZUB 3 models, without a sliding/hinged lid.

Weight

kg

13,5

Order no.

[88132047](#)





GN cooling pellet CNS 1/1 - 30mm

Stainless steel GN 1/1 cooling plate for pre-heating and passive cooling during the transportation of food in Rieber thermoport® models, can be inserted horizontally on the support rails.

Weight	Order no.
kg	
5,6	85012002



GN cooling pellet plastic 1/1 - orange

Plastic GN 1/1 cooling plate for pre-heating and passive cooling during the transportation of food in Rieber thermoport® models, can be inserted horizontally on the support rails.

Weight	Order no.
kg	
2,6	85022038



Hinged lid - Norm trolley 2

Extra hinged lid for all STW 2 models - 1/3 on the guest side and 2/3 at the back.

Weight	Order no.
kg	
14,0	88132071



Hinged lid - Norm trolley 3

Extra hinged lid for all STW 3 models - 1/3 on the guest side and 2/3 at the back.

Weight	Order no.
kg	
-	88132072



Drawbar/coupl. - Norm trolley 2-comp.

Drawbar and coupling system suitable for 2-comp. STW models - for transporting with tractor units.

Weight	Order no.
kg	
12,0	88221105



Drawbar/coupl. - Norm trolley 3-comp.

Drawbar and coupling system suitable for 3-comp. STW models - for transporting with tractor units.

Weight	Order no.
kg	
-	88221106

Sliding cover, pull-out - Norm trolley 2

Extra sliding lid for all STW 2 models - insulated, can be pulled out over the face sides, 100 mm locking position, not retrofittable.

Weight

kg

20,0

Order no.

[88132069](#)



Sliding cover, pull-out - Norm trolley 3

Extra sliding lid for all STW 3 models - insulated, can be pulled out over the face sides, 100 mm locking position, not retrofittable.

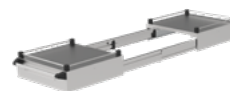
Weight

kg

25,0

Order no.

[88132070](#)



Storage surface CNS hinged - front

Hinged storage surface made of stainless steel on the face side for all STW models - for storing plates and similar items.

Weight

kg

2,0

Order no.

[88132002](#)



All-round bumper - Norm trolley 2

Extra all-round impact protection for all STW 2 models.

Weight

kg

-

Order no.

[88132065](#)



All-round bumper - Norm trolley 3

Extra all-round impact protection for all STW 3 models.

Weight

kg

-

Order no.

[88132066](#)



basket strainer in s/s for drainpipe

Weight

kg

0,0

Order no.

[57010301](#)



Longlife Digital Thermometer 0 - 120°C

Weight

kg

0,0

Order no.

[33070402](#)



Regiostation with 2 large compartments in 230/400V

Various compartment combinations for keeping warm/cool & regenerating, bottom 2 compartments each max. 7x GN 1/1 65mm. Type 3 & 5 neutral drawer in the centre. Heat/light bridge, sneeze guard & 3-sided gallery, removable side controls. Cool: +2°C to +14°C. Regenerating: up to +170°C. Rated voltage 1N AC 230V 50Hz / 3N AC 400V 50Hz.



More info



Bulk regen trolley 5 2xrefrig./reg. 230V

1x cooling and 1x regeneration cupboard | Width tray slide folded out: 944 mm | Height cover: 986 mm | Connector type: Safety switch (type F) | Cable type: spiral cable | Cable length: 2500 mm | 2 steering; 2 steering stop; 1 fixed castor in the middle | Castor Ø: 160 mm | 4 corner bumpers

Dimensions mm	Weight kg	Connected load kW	Order no.
1414 x 712 x 1460,5	183,0	3,600	88270501



Bulk regen trolley 3 refrig./regen., 400V

1x cooling and 1x regeneration cupboard | Width tray slide folded out: 944 mm | Height cover: 986 mm | Connector type: CEE-Plug 400V/16A | Cable type: spiral cable | Cable length: 2500 mm | 2 steering; 2 steering stop; 1 fixed castor in the middle | Castor Ø: 160 mm | 4 corner bumpers

Dimensions mm	Weight kg	Connected load kW	Order no.
1414 x 712 x 1460,5	174,0	7,000	88270302



Bulk regen trolley 5 2xrefrig./reg. 400V

1x cooling and 1x regeneration cupboard | Width tray slide folded out: 944 mm | Height cover: 986 mm | Connector type: CEE-Plug 400V/16A | Cable type: spiral cable | Cable length: 2500 mm | 2 steering; 2 steering stop; 1 fixed castor in the middle | Castor Ø: 160 mm | 4 corner bumpers

Dimensions mm	Weight kg	Connected load kW	Order no.
1414 x 712 x 1460,5	183,0	7,400	88270502



Bulk regen trolley 6 2xrefrig./reg. 400V

2x regeneration cupboard | Width tray slide folded out: 944 mm | Height cover: 986 mm | Connector type: CEE-Plug 400V/16A | Cable type: spiral cable | Cable length: 2500 mm | 2 steering; 2 steering stop; 1 fixed castor in the middle | Castor Ø: 160 mm | 4 corner bumpers

Dimensions mm	Weight kg	Connected load kW	Order no.
1414 x 712 x 1460,5	185,0	7,400	88270403

Bulk regen trolley 7 2xregeneration 400V

2x regeneration cupboard | Width tray slide folded out: 944 mm | Height cover: 986 mm | Connector type: CEE-Plug 400V/16A | Cable type: spiral cable | Cable length: 2500 mm | 2 steering; 2 steering stop; 1 fixed castor in the middle | Castor Ø: 160 mm | 4 corner bumpers



Dimensions	Weight	Connected load	Order no.
mm	kg	kW	
1414 x 712 x 1460,5	165,0	6,400	88270402



Regiostation with 1 large compartment or 2 small compartments in 230/400V

Various compartment combinations for keeping warm/cool & regenerating, bottom 1 compartment max. 7x GN 1/1 65mm or 2 small compartments. Heat/light bridge, sneeze guard & 3-sided gallery, removable side control (not with type 13). Cool: +2°C to +14°C. Regenerating: up to +170°C. Rated voltage 1N AC 230V 50Hz / 3N AC 400V 50Hz.



More info



Bulk regen trolley 11 regeneration 230V

1x regeneration cabinet cupboard | Width tray slide folded out: 944 mm | Height cover: 986 mm | Connector type: CEE-Plug 400V/16A | Cable type: spiral cable | Cable length: 2500 mm | 2 fixed-; 2 swivel castors | Castor Ø: 160 mm | 4 corner bumpers

Dimensions mm	Weight kg	Connected load kW	Order no.
959,5 x 712 x 1460,5	143,0	3,200	88270601



Bulk regen trolley 12 refrig./reg., 230V

| Width tray slide folded out: 944 mm | Height cover: 986 mm | Connector type: Safety switch (type F) | Cable type: spiral cable | Cable length: 2500 mm | 2 fixed-; 2 swivel castors | Castor Ø: 160 mm | 4 corner bumpers

Dimensions mm	Weight kg	Connected load kW	Order no.
959,5 x 712 x 1460,5	155,0	3,400	88270603



Bulk regen trolley 13 ref/reg &ref. 230V

1x cooling & 1x cooling & regeneration cupboard | Width tray slide folded out: 944 mm | Height cover: | Connector type: Safety switch (type F) | Cable type: spiral cable | Cable length: 2500 mm | 2 fixed-; 2 swivel castors | Castor Ø: 160 mm | 4 corner bumpers

Dimensions mm	Weight kg	Connected load kW	Order no.
959,5 x 712 x 1116	150,0	3,200	88270605



Bulk regen trolley 12 refrig./reg. 400V

| Width tray slide folded out: 944 mm | Height cover: 986 mm | Connector type: CEE-Plug 400V/16A | Cable type: spiral cable | Cable length: 2500 mm | 2 fixed-; 2 swivel castors | Castor Ø: 160 mm | 4 corner bumpers

Dimensions mm	Weight kg	Connected load kW	Order no.
959,5 x 712 x 1460,5	155,0	7,100	88270604

Regiostation accessories

Suitable accessories for the Regiostation - such as dispensing tops, fold-down shelves, various integrable tray racks, plastic covers and tray slides. Also logistically expandable with corresponding transfer trolleys. In addition, various panelling options for a stylish look.



More info

Hinged shelf - Regiostation

Fold-down shelf made of stainless steel - on the side for all Regiostation models.

Weight

kg

-

Order no.

[88271112](#)



Removable rack 8xGN1/1, 55- Regiostation

Matching additional removable rack made of stainless steel for all Regiostation models - with 8 support rails for GN 1/1, 55 mm deep.

Weight

kg

-

Order no.

[88271101](#)



Removable rack 7x GN1/1 65- Regiostation

Matching additional removable rack made of stainless steel for all Regiostation models - with 7 support rails for GN 1/1, 65 mm deep.

Weight

kg

7,8

Order no.

[88271104](#)



Transfer trolley - Regiostation

Matching transfer trolley made of stainless steel for all Regiostation models.

Weight

kg

-

Order no.

[88271102](#)



Plastic cover - transfer trolley

Matching plastic cover for the transfer trolley for use with all Regiostation models.

Weight

kg

-

Order no.

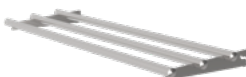
[88271103](#)



Tray slide - Regiostation 2-comp.

Matching tray slide made of stainless steel for all Regiostation models with 2 compartments.

Weight	Order no.
kg	
-	88271012



Tray slide - Regiostation 1-comp.

Matching tray slide made of stainless steel for all Regiostation models with 1 compartment.

Weight	Order no.
kg	
-	88271014

Panelling - Regiostation 2-comp.

Matching formica panelling on 3 sides for all Regiostation models with 2 compartments.

Weight	Order no.
kg	
2,0	88271114

Panelling - Regiostation 1-comp.

Matching formica panelling on 3 sides for all Regiostation models with 1 compartment.

Weight	Order no.
kg	
2,0	88271113

Serving gantry - Regiostation 1-comp.

Matching serving gantry made of stainless steel for all Regiostation models with 1 compartment.

Weight	Order no.
kg	
-	88271010

Serving trolley for breakfast & dinner stainless steel

Neutral trolley available closed with deep-drawn inner muffle (H3) of the compartments or in open version. Top with hygienic stainless steel cover, plastic castors, 4 bumper corners, 2 robust push handles. For transporting & serving breakfast and / or evening meal, can be used as an alternative to the tray system.



More info



Breakfast trolley 2x 1/1 open

2 swivel-; 2 swivel castors with brakes | Castor Ø: 125 mm | 4 corner bumpers

Dimensions	Weight	Connected load	Order no.
mm	kg	kW	
872 x 681 x 1002	35,0	-	88042120



Breakfast trolley 3x 1/1 open

2 swivel-; 2 swivel castors with brakes | Castor Ø: 125 mm | 4 corner bumpers

Dimensions	Weight	Connected load	Order no.
mm	kg	kW	
1237 x 681 x 1002	-	-	88042122



Breakfast trolley 2x 1/1 closed (H3)

2 swivel-; 2 swivel castors with brakes | Castor Ø: 125 mm | 4 corner bumpers

Dimensions	Weight	Connected load	Order no.
mm	kg	kW	
1161 x 775 x 1002	86,4	3,200	88042121



Breakfast trolley 3x 1/1 closed (H3)

2 swivel-; 2 swivel castors with brakes | Castor Ø: 125 mm | 4 corner bumpers

Dimensions	Weight	Connected load	Order no.
mm	kg	kW	
1739 x 775 x 1002	165,0	3,200	88042123



Cold food serving trolley 3x 1/1

2 swivel-; 2 swivel castors with brakes | Castor Ø: 125 mm | 4 corner bumpers

Dimensions	Weight	Connected load	Order no.
mm	kg	kW	
1203 x 850 x 1100	15,0	-	88042401



Bain-Marie made of Stainless steel

Program Overview



Stainless steel bain-marie for serving - for keeping warm

Electrically heatable from +30°C to +90°C. Cover with retracted GN warming tray (for 1x 1/1) or welded-in GN warming tray (for 2x & 3x 1/1). For GN containers max. 1/1 200mm. With offset (only for 1x 1/1 without), with drain tap for each well. Covered on all sides, with switch panel, cable connection 2m. Rated voltage 1N AC 230V 50Hz.



Stainless steel bain-marie for installation in cover - for keeping warm

Electrically heatable with switch panel from +30°C to +110°C, heating underbuilt. Only wet-heatable, deep-drawn GN well for GN containers max. 1/1 200mm. Suitable for cut-out table top: 356x556, R50, -control box: 152x 85 in mm. Circumferential rim 30mm, fixing element, insulating cover & drainage tap 1/2". Rated voltage 1N AC 230V 50Hz.



Stainless steel bain-marie for welding into cover - for keeping warm

Electrically heatable with switch panel from +30°C to +110°C, heating underbuilt. Only wet-heatable, deep-drawn GN well for GN containers max. 1/1 200mm. Suitable for cut-out stainless steel cover: 312x514, R32 in mm. Circumferential rim 30mm, fixing element, insulating cover & drainage tap 1/2". Rated voltage 1N AC 230V 50/60Hz.

SWISS **PLY**



Stainless steel bain-marie with SWISS-PLY multilayer bottom - for cooking & keeping warm

Electrically heatable up to max. +200°C. Can be heated wet & dry, considerable energy saving when dry. GN tray with SWISS-PLY multi-layer base for GN containers max. 1/1 200mm. Digital control & temperature display. With drain tap. Covered on all sides, with switch panel, cable connection 2m. Rated voltage 1N AC 230V 50/60Hz.



Our GN basins can be heated wet & dry. Advantages of dry heating: energy saving, no calcification, better hygiene, faster cleaning



Digital HACCP documentation - safe & time-saving

Digital HACCP documentation with the CHECK HACCP system. App temperature measurement with Bluetooth-capable core temperature sensor. From goods receipt, production to output. Paper & complete HACCP in real time, visible everywhere in your dashboard.



Core temperature sensor - can be retrofitted at any time - order no. 94 01 01 05



Stainless steel bain-marie for serving - for keeping warm

Electrically heatable from +30°C to +90°C. Cover with retracted GN warming tray (for 1x 1/1) or welded-in GN warming tray (for 2x & 3x 1/1). For GN containers max. 1/1 200mm. With offset (only for 1x 1/1 without), with drain tap for each well. Covered on all sides, with switch panel, cable connection 2m. Rated voltage 1N AC 230V 50Hz.



More info

Table-top bain-marie 1x1/1 w. drainage

External dimensions with switch panel and connection cable: 360 x 640 x 290 mm | Niche width with lowered installation: 660 mm



Dimensions mm	Weight kg	Connected load kW	Order no.
360 x 564 x 290	11,7	0,765	87030201

Table-top bain-marie 2x1/1 w. drainage

External dimensions with switch panel and connection cable: 753 x 690 x 290 mm | Niche width with lowered installation: 710 mm



Dimensions mm	Weight kg	Connected load kW	Order no.
753 x 614 x 290	22,7	1,530	87030202

Table-top bain-marie 3x1/1 w. drainage

External dimensions with switch panel and connection cable: 1122 x 690 x 290 mm | Niche width with lowered installation: 710 mm



Dimensions mm	Weight kg	Connected load kW	Order no.
1122 x 614 x 290	29,2	2,295	87030203

Stainless steel bain-marie for installation in cover - for keeping warm

Electrically heatable with switch panel from +30°C to +110°C, heating underbuilt. Only wet-heatable, deep-drawn GN well for GN containers max. 1/1 200mm. Suitable for cut-out table top: 356x556, R50, -control box: 152x 85 in mm. Circumferential rim 30mm, fixing element, insulating cover & drainage tap 1/2". Rated voltage 1N AC 230V 50Hz.



More info



Built-in bain-marie 1/1 - panelling

Switch panel cutout: 152 x 85 mm | Outside dimensions to lower edge of drain cock: 374,5 x 574 x 321,5 mm | Table top cutout: 356 x 556 mm, R50

Dimensions mm	Weight kg	Connected load kW	Order no.
374,5 x 574 x 228	11,3	0,765	87010201



Built-in bain-marie 1/1 - without panel.

Switch panel cutout: 152 x 85 mm | Outside dimensions to lower edge of drain cock: 374,5 x 574 x 321,5 mm | Table top cutout: 356 x 556 mm, R50

Dimensions mm	Weight kg	Connected load kW	Order no.
374,5 x 574 x 228	5,7	0,765	87010202

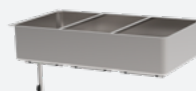


Stainless steel bain-marie for welding into cover - for keeping warm

Electrically heatable with switch panel from +30°C to +110°C, heating underbuilt. Only wet-heatable, deep-drawn GN well for GN containers max. 1/1 200mm. Suitable for cut-out stainless steel cover: 312x514, R32 in mm. Circumferential rim 30mm, fixing element, insulating cover & drainage tap 1/2". Rated voltage 1N AC 230V 50Hz.



More info



WELD-IN HOT WELL BM 311 1/1 B WITH DRAIN

Outer dimensions to lower edge of drain cock: 345 x 549 x 326 mm | Cutout stainless steel cover: 312 x 514, R32

Dimensions mm	Weight kg	Connected load kW	Order no.
345 x 549 x 227	7,2	0,765	87020201

WELD-IN HOT WELL BM 311 2/1 W WITH DRAIN

Outer dimensions to lower edge of drain cock: 669 x 549 x 392 mm | Cutout stainless steel cover: 634 x 514, R32

Dimensions mm	Weight kg	Connected load kW	Order no.
669 x 549 x 231	10,0	1,530	87020202

WELD-IN HOT WELL BM 311 3/1 W WITH DRAIN

Outer dimensions to lower edge of drain cock: 994 x 549 x 392 mm | Cutout stainless steel cover: 959 x 514, R32



Dimensions mm	Weight kg	Connected load kW	Order no.
994 x 549 x 231	15,0	2,295	87020203

Stainless steel bain-marie with SWISS-PLY multilayer bottom - for cooking & keeping warm

Electrically heatable up to max. +200°C. Can be heated wet & dry, considerable energy saving when dry. GN tray with SWISS-PLY multi-layer base for GN containers max. 1/1 200mm. Digital control & temperature display. With drain tap. Covered on all sides, with switch panel, cable connection 2m. Rated voltage 1N AC 230V 50/60Hz.



More info



Table-top bain-marie 1/1-SP with drain.

External dimensions with switch panel and connection cable: 406 x 672,5 x 309 mm

Dimensions	Weight	Connected load	Order no.
mm	kg	kW	
406 x 620 x 309	11,7	2,900	87030209



Bain-marie accessories

Matching accessories for the Bain-Marie - such as various top versions with light bridges or practical drain sieves for the tubs.



More info

basket strainer in s/s for drainpipe



Weight

kg

0,0

Order no.

[57010301](#)

Gantry light - Norm trolley & ZUB 2

Matching gantry with a lighting bridge for all STW and ZUB 2 models, without a sliding/hinged lid.



Weight

kg

8,0

Order no.

[88132045](#)

Gantry light - Norm trolley & ZUB 3

Matching gantry with a lighting bridge for all STW and ZUB 3 models, without a sliding/hinged lid.



Weight

kg

13,5

Order no.

[88132047](#)



Tray transport trolley - TWF

Program Overview



Tray transport trolley - TWF for GN trays - neutral

Made of stainless steel, double-walled insulated GN cabinet compartments & doors. Robust 2-point locking, max. opening angle 270°. 2 continuous impact-protected round-tube push handles on each end. For inserting (lengthwise) GN trays, deep-drawn tray support ledges & safety catches. Can be immersed for transport out of the house, lorry, electric tractor by means of coupling drawbar system.



Tray transport trolley - TWF for GN trays - passively cooled

Double-walled insulated GN cabinet compartments & doors, centrally 2 electric GN cooling plates & defrost water drain. 2-point locking, max. opening angle 270°. 2 full-length round-tube push handles at each end. Sliding in (lengthwise) of GN trays, deep-drawn tray support ledges & safety catches. For transport outside, truck, electric tractor by means of coupling drawbar system.



Tray transport trolley - TWF for GN trays - actively cooled

Evaporator in the centre, refrigerator below incl. defrost water evaporator, double-walled GN cabinet compartments & doors. 2-point locking, max. opening angle 270°. 2 full-length round tube push handles on each end. For inserting (lengthwise) GN trays, deep-drawn tray support ledges & safety catches. For transport outside, truck, electric tractor by means of coupling drawbar system.



Tray transport trolley - TWF for EN trays - neutral

Made of stainless steel, double-walled insulated EN cabinet compartments & doors. Robust 2-point locking, max. opening angle 270°. 2 continuous impact-protected round tube push handles on each end. For insertion (lengthwise) of EN trays, deep-drawn tray support beads & locks. Convenient for transport out of the house, lorry, electric tractor by means of coupling drawbar system.

Digital HACCP documentation - safe & time-saving

Digital documentation with the CHECK HACCP system. App temperature measurement & Bluetooth-capable core temperature sensor. From goods receipt, production to output. Paper & complete HACCP, in real time, centrally viewable everywhere in your dashboard.



Core temperature sensor - can be retrofitted at any time - order no. 94 01 01 05



Tray transport trolley - TWF for EN trays - passively cooled

Double-walled insulated EN cabinet compartments & doors, centrally 2 electric GN cooling plates & defrost water drain. 2-point locking, max. opening angle 270°. 2 full-length round-tube push handles at each end. Sliding in (lengthwise) of EN trays, deep-drawn tray support ledges & safety catches. For transport outside the house, lorry, electric tractor by means of coupling drawbar system.



Tray transport trolley - TWF for EN trays - actively cooled

Evaporator in the centre, refrigerator below incl. defrost water evaporator, double-walled EN cabinet compartments & doors. 2-point locking, max. opening angle 270°. 2 full-length round tube push handles on each end. For inserting (lengthwise) EN trays, deep-drawn tray support beading & securing. For transport outside the house, lorry, electric tractor by means of coupling drawbar system.



Tray transport trolley - TWF for GN/EN trays - neutral

Made of stainless steel, double-walled insulated GN/EN cabinet compartments & doors. Robust 2-point locking, max. opening angle 270°. 2 continuous impact-protected round-tube push handles on each end. For inserting GN/EN trays crosswise, deep-drawn tray support ledges & safety catches. For transport outside the house, lorry, electric tractor by means of coupling drawbar system.



Tray transport trolley - TWF for GN/EN trays - passively cooled

Double-walled insulated EN/GN cabinet compartments & doors, centrally 2 electric GN cooling plates & defrost water drain. 2-point locking, max. opening angle 270°. 2 full-length round-tube push handles on each end. Crosswise insertion of EN/GN trays, deep-drawn tray support ledges & safety catches. For transport outside the house, lorry, electric tractor by means of coupling drawbar system.

Tray transport trolley - TWF

Program Overview



Tray transport trolley - TWF for GN/EN trays - actively cooled

Evaporator in the centre, refrigerator below incl. defrost water evaporator, double-walled GN/EN cabinet compartments & doors. 2-point locking, max. opening angle 270°. 2 full-length round-tube push handles on each end. Crosswise insertion of GN/EN trays, deep-drawn tray support ledges & safety catches. For transport outside the house, lorry, electric tractor by means of coupling drawbar system.



Tray transport trolley - TWF for Veska trays - neutral

Made of stainless steel, double-walled insulated Veska cabinet compartments & doors. Robust 2-point locking, max. opening angle 270°. 2 continuous impact-protected round tube push handles on each end. For inserting Veska trays lengthwise, deep-drawn tray support beads & locks. Can be dipped for transport outside the house, truck, electric tractor by means of coupling drawbar system.

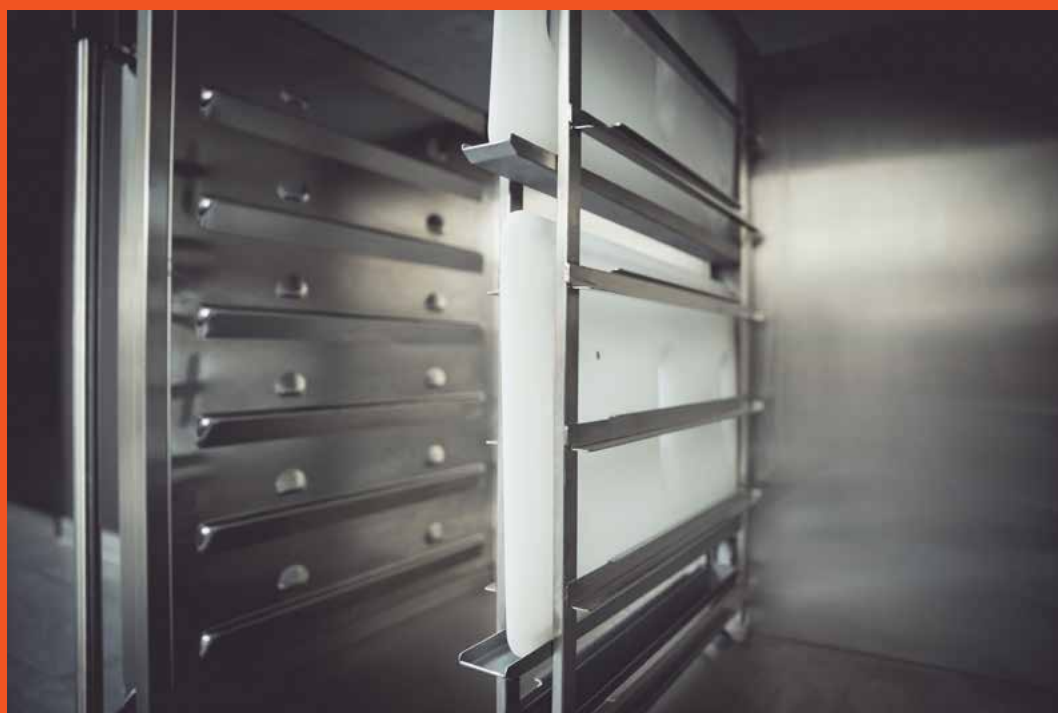


Digital HACCP documentation - safe & time-saving

Digital documentation with the CHECK HACCP system. App temperature measurement & Bluetooth-capable core temperature sensor. From goods receipt, production to output. Paper & complete HACCP, in real time, centrally viewable everywhere in your dashboard.



Core temperature sensor - can be retrofitted at any time - order no. 94 01 01 05



Tray transport trolley - TWF for GN trays - neutral

Made of stainless steel, double-walled insulated GN cabinet compartments & doors. Robust 2-point locking, max. opening angle 270°. 2 continuous impact-protected round-tube push handles on each end. For inserting (lengthwise) GN trays, deep-drawn tray support ledges & safety catches. Can be immersed for transport out of the house, lorry, electric tractor by means of coupling drawbar system.



More info



Tray trolley TWF - 2 x GN lengthways

Push handle short side | tray insert along | 2 fixed-; 2 swivel castors | Castor Ø: 200 mm | U-shaped bumper bar

Dimensions mm	Support rails	Support distance mm	Order no.
1087 x 765 x 1425	2 x 8	115	88440205
1087 x 765 x 1655	2 x 10	115	88440307
1087 x 765 x 1885	2 x 12	115	88440405



Tray trolley TWF - 3 x GN lengthways

Push handle short side | tray insert along | 2 fixed-; 2 swivel castors | Castor Ø: 200 mm | U-shaped bumper bar

Dimensions mm	Support rails	Support distance mm	Order no.
1522 x 765 x 1425	3 x 8	115	88440507
1522 x 765 x 1655	3 x 10	115	88440607
1522 x 765 x 1885	3 x 12	115	88440705



Tray transport trolley - TWF for GN trays - passively cooled

Double-walled insulated GN cabinet compartments & doors, centrally 2 electric GN cooling plates & defrost water drain. 2-point locking, max. opening angle 270°. 2 full-length round-tube push handles at each end. Sliding in (lengthwise) of GN trays, deep-drawn tray support ledges & safety catches. For transport outside, truck, electric tractor by means of coupling drawbar system.



More info



Tray trolley TWF-PK - 2 x GN lengthways

Push handle short side | tray insert along | 2 fixed-; 2 swivel castors | Castor Ø: 200 mm | U-shaped bumper bar

Dimensions mm	Support rails	Support distance mm	Order no.
1087 x 765 x 1425	2 x 8	115	88440207
1087 x 765 x 1655	2 x 10	115	88440309
1087 x 765 x 1885	2 x 12	115	88440407



Tray trolley TWF-PK - 3 x GN lengthways

Push handle short side | tray insert along | 2 fixed-; 2 swivel castors | Castor Ø: 200 mm | U-shaped bumper bar

Dimensions mm	Support rails	Support distance mm	Order no.
1522 x 765 x 1425	3 x 8	115	88440509
1522 x 765 x 1655	3 x 10	115	88440609
1522 x 765 x 1885	3 x 12	115	88440707



Tray transport trolley - TWF for GN trays - actively cooled

Evaporator in the centre, refrigerator below incl. defrost water evaporator, double-walled GN cabinet compartments & doors. 2-point locking, max. opening angle 270°. 2 full-length round tube push handles on each end. For inserting (lengthwise) GN trays, deep-drawn tray support ledges & safety catches. For transport outside, truck, electric tractor by means of coupling drawbar system.



More info



Tray trolley TWF-AK - 2 x GN - length

Connected load: 0,6 kW | Plug type: Safety switch (type F) | Cable type: spiral cable | Cable length: 2000 mm | Cooling range +2°C to +15°C | Refrigerant: R290 | Push handle short side | Tray insert along | 2 fixed-; 2 swivel castors | Castor Ø: 200 mm | U-shaped bumper bar

Dimensions mm	Support rails	Support distance mm	Order no.
1207 x 765 x 1478	2 x 8	115	88450208
1207 x 765 x 1710	2 x 10	115	88450308



Tray transport trolley - TWF for EN trays - neutral

Made of stainless steel, double-walled insulated EN cabinet compartments & doors. Robust 2-point locking, max. opening angle 270°. 2 continuous impact-protected round tube push handles on each end. For insertion (lengthwise) of EN trays, deep-drawn tray support beads & locks. Convenient for transport out of the house, lorry, electric tractor by means of coupling drawbar system.



More info



Tray trolley TWF - 2 x EN lengthways

Push handle short side | tray insert along | 2 fixed-; 2 swivel castors | Castor Ø: 200 mm | U-shaped bumper bar

Dimensions mm	Support rails	Support distance mm	Order no.
1087 x 765 x 1425	2 x 8	115	88440204
1087 x 765 x 1655	2 x 10	115	88440306
1087 x 765 x 1885	2 x 12	115	88440404



Tray trolley TWF - 3 x EN lengthways

Push handle short side | tray insert along | 2 fixed-; 2 swivel castors | Castor Ø: 200 mm | U-shaped bumper bar

Dimensions mm	Support rails	Support distance mm	Order no.
1522 x 765 x 1425	3 x 8	115	88440506
1522 x 765 x 1655	3 x 10	115	88440606
1522 x 765 x 1885	3 x 12	115	88440704



Tray transport trolley - TWF for EN trays - passively cooled

Double-walled insulated EN cabinet compartments & doors, centrally 2 electric GN cooling plates & defrost water drain. 2-point locking, max. opening angle 270°. 2 full-length round-tube push handles at each end. Sliding in (lengthwise) of EN trays, deep-drawn tray support ledges & safety catches. For transport outside the house, lorry, electric tractor by means of coupling drawbar system.



More info



Tray trolley TWF-PK - 2 x EN lengthways

Push handle short side | tray insert along | 2 fixed-; 2 swivel castors | Castor Ø: 200 mm | U-shaped bumper bar

Dimensions mm	Support rails	Support distance mm	Order no.
1087 x 765 x 1425	2 x 8	115	88440206
1087 x 765 x 1655	2 x 10	115	88440308
1087 x 765 x 1885	2 x 12	115	88440406



Tray trolley TWF-PK - 3 x EN lengthways

Push handle short side | tray insert along | 2 fixed-; 2 swivel castors | Castor Ø: 200 mm | U-shaped bumper bar

Dimensions mm	Support rails	Support distance mm	Order no.
1522 x 765 x 1425	3 x 8	115	88440508
1522 x 765 x 1655	3 x 10	115	88440608
1522 x 765 x 1885	3 x 12	115	88440706



Tray transport trolley - TWF for EN trays - actively cooled

Evaporator in the centre, refrigerator below incl. defrost water evaporator, double-walled EN cabinet compartments & doors. 2-point locking, max. opening angle 270°. 2 full-length round tube push handles on each end. For inserting (lengthwise) EN trays, deep-drawn tray support beading & securing. For transport outside the house, lorry, electric tractor by means of coupling drawbar system.



More info



Tray trolley TWF-AK - 2 x EN - length

Connected load: 0,6 kW | Plug type: Safety switch (type F) | Cable type: spiral cable | Cable length: 2000 mm | Cooling range +2°C to +15°C | Refrigerant: R290 | Push handle short side | Tray insert along | 2 fixed-; 2 swivel castors | Castor Ø: 200 mm | U-shaped bumper bar

Dimensions mm	Support rails	Support distance mm	Order no.
1207 x 765 x 1478	2 x 8	115	88450207
1207 x 765 x 1710	2 x 10	115	88450307



Tray transport trolley - TWF for GN/EN trays - neutral

Made of stainless steel, double-walled insulated GN/EN cabinet compartments & doors. Robust 2-point locking, max. opening angle 270°. 2 continuous impact-protected round-tube push handles on each end. For inserting GN/EN trays crosswise, deep-drawn tray support ledges & safety catches. For transport outside the house, lorry, electric tractor by means of coupling drawbar system.



More info



Tray trolley TWF - 2 x EN/GN crossways

Push handle short side | tray insert across | 2 fixed-; 2 swivel castors | Castor Ø: 200 mm | U-shaped bumper bar

Dimensions mm	Support rails	Support distance mm	Order no.
1407 x 875 x 1425	2 x 16	115	88441107
1407 x 875 x 1655	2 x 20	115	88441206



Tray transport trolley - TWF for GN/EN trays - passively cooled

Double-walled insulated EN/GN cabinet compartments & doors, centrally 2 ectical GN cooling plates & defrost water drain. 2-point locking, max. opening angle 270°. 2 full-length round-tube push handles on each end. Crosswise insertion of EN/GN trays, deep-drawn tray support ledges & safety catches. For transport outside the house, lorry, electric tractor by means of coupling drawbar system.



More info



Tray trolley TWF-PK - 2 x EN/GN cross

Push handle short side | tray insert across | 2 fixed-; 2 swivel castors | Castor Ø: 200 mm | U-shaped bumper bar

Dimensions mm	Support rails	Support distance mm	Order no.
1407 x 875 x 1655	2 x 20	115	88441207



Tray transport trolley - TWF for GN/EN trays - actively cooled

Evaporator in the centre, refrigerator below incl. defrost water evaporator, double-walled GN/EN cabinet compartments & doors. 2-point locking, max. opening angle 270°. 2 full-length round-tube push handles on each end. Crosswise insertion of GN/EN trays, deep-drawn tray support ledges & safety catches. For transport outside the house, lorry, electric tractor by means of coupling drawbar system.



More info



Tray trolley TWF-AK - 2 x EN/GN - cross

Connected load: 0,6 kW | Plug type: Safety switch (type F) | Cable type: spiral cable | Cable length: 2000 mm | Cooling range +2°C to +15°C | Refrigerant: R290 | Push handle short side | Tray insert across | 2 fixed-; 2 swivel castors | Castor Ø: 200 mm | U-shaped bumper bar

Dimensions mm	Support rails	Support distance mm	Order no.
1527 x 915 x 1708	2 x 20	115	88450402



Tray transport trolley - TWF for Veska trays - neutral

Made of stainless steel, double-walled insulated Veska cabinet compartments & doors. Robust 2-point locking, max. opening angle 270°. 2 continuous impact-protected round tube push handles on each end. For inserting Veska trays lengthwise, deep-drawn tray support beads & locks. Can be dipped for transport outside the house, truck, electric tractor by means of coupling drawbar system.



More info



Tray trolley TWF - 2 x Veska lengthways

Push handle short side | tray insert along | 2 fixed-; 2 swivel castors | Castor Ø: 200 mm | U-shaped bumper bar

Dimensions mm	Support rails	Support distance mm	Order no.
1087 x 765 x 1425	2 x 8	115	88440208
1087 x 765 x 1655	2 x 10	115	88440310
1087 x 765 x 1885	2 x 12	115	88440408



Tray trolley TWF - 3 x Veska lengthways

Push handle short side | tray insert along | 2 fixed-; 2 swivel castors | Castor Ø: 200 mm | U-shaped bumper bar

Dimensions mm	Support rails	Support distance mm	Order no.
1522 x 765 x 1655	3 x 10	115	88440610
1522 x 765 x 1885	3 x 12	115	88440708



TWF Accessories

Matching accessories for the TWF tray transport trolleys - such as extensions with coupling & drawbar, matching EN or GN trays to slide in, up to GN deep-freeze plates, for additional passive cold storage. The top can be equipped with a corresponding gallery for additional non-slip storage space, the interior can be extended with a Eurotablar for the integration of a Thermi beverage container 7L, as well as additional card holders or castor options for optimum mobility. Can also be fitted with a set of all-round bumpers for perfect protection.



More info

Drawbar/coupl.- troll. TWF 2x20

Drawbar and coupling system suitable for TWF 2x20 - for transporting with tractor units.

Weight	Order no.
kg	
-	88220617

Drawbar/coupl.- troll. TWF 1x20

Drawbar and coupling system suitable for TWF 1x20 - for transporting with tractor units.

Weight	Order no.
kg	
-	88220615

Drawbar/coupl.- troll. TWF 3x8 / 10 / 12

Drawbar and coupling system suitable for TWF models 3x8, 10 and 12 - for transporting with tractor units.

Weight	Order no.
kg	
-	88220618

Drawbar/coupl.- troll. TWF 2x8 / 10 / 12

Drawbar and coupling system suitable for TWF models 2x8, 10 and 12 - for transporting with tractor units.

Weight	Order no.
kg	
-	88220616

EN tray - granite decor 530x370mm

EN-Euro standard tray, granite decor colour, 530x370 mm - for use with all EN tray trolley models.

Weight	Order no.
kg	
0,2	89080272

GN tray - granite decor 530x325mm

GN-Gastronorm tray, granite decor colour, 530x325 mm - for use with all GN tray trolley models.

Weight	Order no.
kg	
0,2	89080281

Euro shelf Thermi 7l s/s, cross

Weight	Order no.
kg	
5,0	88220120

Euro shelf, Thermi 7l s/s, length

Weight	Order no.
kg	
3,6	88220117

Gallery - tray trolley TWF - 2x20 comp.

Gallery complete, all-round the top of the worktop - for all TWF models with 2x20 cupboard compartments (EN/GN).

Weight	Order no.
kg	
-	88442008

Gallery - for tray trolley TWF - 3 comp.

Gallery complete, all-round the top of the worktop - for all TWF models with 3x cupboard compartments (EN/GN/Veska).

Weight	Order no.
kg	
-	88442006

Gallery - for tray trolley TWF - 1 comp.

Gallery complete, all-round the top of the worktop - for all TWF models with 1x cupboard compartment (EN/GN/Veska).

Weight	Order no.
kg	
-	88442007

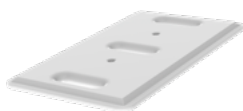
Gallery - for tray trolley TWF - 2 comp.

Gallery complete, all-round the top of the worktop - for all TWF models with 2x cupboard compartments (EN/GN/Veska).

Weight	Order no.
kg	
-	88442005

GN cooling plate 1/1 plastic

Plastic cooling plate in a GN size - to insert for passively keeping food cold in GN containers.



Weight	Order no.
kg	
3,1	85022095

Card holder - DIN A6 - tray trolley TWF

Card holder for normal A6 cards for use with all TWF models.

Weight	Order no.
kg	
0,2	88220205

Card holder - comp.cards- tray troll.TWF

Card holder for computer cards for use with all TWF models.

Weight	Order no.
kg	
0,2	88220206

Set of swivel castors w/ central locking

Set of swivel castors with a central stop, locking on 2 wheels using a foot lever, particularly suitable for trucks transport - for all TWF models.



Weight	Order no.
kg	
-	88442013

Set of swivel castor w/ directional lock

Set of swivel castors with central directional locking using a foot lever - for all TWF models.



Weight

kg

-

Order no.

[88442014](#)

Top all around bumper TWF 2x20

Bumper set, all-round on top for impact protection, in black - for all TWF models with 2x20 cupboard compartments (EN/GN).

Weight

kg

-

Order no.

[88442012](#)

Top all around bumper TWF 1x20

Bumper set, all-round on top for impact protection, in black - for all TWF models with 1x20 cupboard compartments (EN/GN).

Weight

kg

-

Order no.

[88442011](#)

Top all around bumper TWF 3x 8/10/12

Bumper set, all-round on top for impact protection, in black - for all TWF models with 3x8, 10 or 12 cupboard compartments (EN/GN/Veska).

Weight

kg

-

Order no.

[88442010](#)

Top all around bumper TWF 2x 8/10/12

Bumper set, all-round on top for impact protection, in black - for all TWF models with 2x8, 10 or 12 cupboard compartments (EN/GN/Veska).

Weight

kg

-

Order no.

[88442009](#)

Fixed castor Ø200 plate 138x116 65°Shore

Weight

kg

1,6

Order no.

[32262515](#)



Swivel castor S/S Ø200Pl.140x110H=240

Weight

kg

2,0

Order no.

[32261515](#)



Compact tray Thermotray

Thermotray compact tray set, consisting of lower (37mm) & upper part, (68mm) made of polypropylene, double-walled CFC-free, foamed. Color lilac/light gray, total weight 2,2 kg. Equippable with 1x food plate Ø255mm, 1x stew bowl 1L, 3x salad/dessert bowl, 1x soup cup 0,45 L , mug with handle 0,25 L.



More info



Colour	Weight kg	Order no.
lilac	2,2	89080204
light gray	2,2	89080229



Insulated tableware Tray solution Combitray

Various combinable insulating lower & upper parts made of polypropylene, double-wall/single-wall insulated, CFC-free foamed. Color lilac/light gray. For insulation of matching porcelain tableware i.A. with cooling/heating pellets. Versions for plates, soup bowls, stew bowls and ultra bowls.



More info

Heat storage bowl s/s - Ø255mm alu core

Ø mm	Height of 1 pc. mm	Height of 11 pcs. mm	Colour	Order no.
255	30	145	matte	89080130

Ultra bowl CNS - Ø255mm

Ultra bowl made of stainless steel, double-walled, with a wax filling, 255 mm diameter.

Ø mm	Height of 1 pc. mm	Height of 11 pcs. mm	Colour	Order no.
255	34	171	matte	89080141



Bottom part - chafing dish Ultra

Ø mm	Height of 1 pc. mm	Height of 11 pcs. mm	Colour	Order no.
259	34	87	lilac	89080284



Insul. base for soup bowl, lilac, PP

Ø mm	Height of 1 pc. mm	Height of 11 pcs. mm	Colour	Order no.
255	32	144	lilac	89080213
255	32	144	light gray	89080233

Insul. lid for Ultra bowl, lilac, PP

Ø mm	Height of 1 pc. mm	Height of 11 pcs. mm	Colour	Order no.
258	72	262	lilac	89080212
258	72	262	light gray	89080232

Base for cooling plate insert, lilac, PP

Ø mm	Height of 1 pc. mm	Height of 11 pcs. mm	Colour	Order no.
255	34	144	lilac	89080266
255	34	144	light gray	89080282

Cool.pellet for PP plate base, dark blue

Ø mm	Height of 1 pc. mm	Height of 11 pcs. mm	Colour	Order no.
185	10	-	light gray	89080269

Base for cooling plate insert, lilac, PP

Ø mm	Height of 1 pc. mm	Height of 11 pcs. mm	Colour	Order no.
255	34	144	lilac	89080266

Cooling cloche IS-OTEL dark

Ø mm	Height of 1 pc. mm	Height of 11 pcs. mm	Colour	Order no.
258	70	305	blue	89080207

LID FOR STEW BOWL IS-OE, LAVENDER

Ø mm	Height of 1 pc. mm	Height of 11 pcs. mm	Colour	Order no.
229	36	116	lilac	89080216

Insul. base for soup bowl, lilac, PP

Ø mm	Height of 1 pc. mm	Height of 11 pcs. mm	Colour	Order no.
162	56	190	lilac	89080211
162	56	190	light gray	89080231

Insul. lid for soup cups Ø162m lilac, PP

Ø mm	Height of 1 pc. mm	Height of 11 pcs. mm	Colour	Order no.
164	37	201	lilac	89080210
164	37	201	light gray	89080230

Insul. base for soup cup Ø162mm,

Insulated bottom part made of polypropylene, double-walled, lilac colour, 162 mm diameter, for insulating 130 mm diameter spill-proof porcelain soup bowls - for use with the matching insulated lid.

Ø mm	Height of 1 pc. mm	Height of 11 pcs. mm	Colour	Order no.
162	56	216	lilac	89080511
162	56	216	light gray	89080513

Ins. top part Soup PP Ø168

Insulated top part made of polypropylene, double-walled, lilac colour, 168 mm diameter, for insulating 130 mm diameter spill-proof porcelain soup bowls.

Ø mm	Height of 1 pc. mm	Height of 11 pcs. mm	Colour	Order no.
168	40	270	lilac	89080512

Soup bowl - CNS Ø132mm

Stainless steel soup bowl, double-walled, 132 mm inner diameter, 136 mm outer diameter, for soups - for use on trays.

Ø mm	Height of 1 pc. mm	Height of 11 pcs. mm	Colour	Order no.
132	61	228	polished	89080308



Lid - CNS - for soup bowl Ø132mm

Stainless steel lid, double-walled, suitable for soup bowls with a 132 mm inner diameter, 136 mm outer diameter, for soups - for use on trays.

Ø mm	Height of 1 pc. mm	Height of 11 pcs. mm	Colour	Order no.
137	10	105	polished	89080309

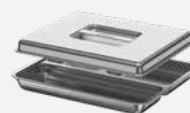


Secure tray solution made of stainless steel for JVA

JVA food tray set in GN 1/2 size, made of hygienic stainless steel 1mm, bottom part 3-divided for 1.25 L, lid with recessed grip, extra safe design, deep-drawn with all-round flanged rim without sharp corners & edges. Bowl & lid optimally stackable separately.



More info



Prison food tray set - 3-pc.

{558}



Dimensions mm	Weight kg	Types	Order no.
325 x 265 x 55	1,4	safe menu set	89080108

prison meal tray - 3-comp.

{558}



Dimensions mm	Weight kg	Types	Order no.
325 x 265 x 55	0,7	safe meal tray	89080164

prison meal tray lid with handle

{558}



Dimensions mm	Weight kg	Types	Order no.
325 x 265	0,5	safe lid	89080165



