



Made in Germany since 1925



# 7.

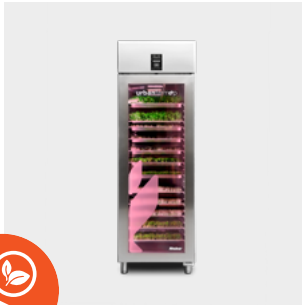
## Cooling

Rieber offers intelligent, energy-efficient cooling systems that are ready for use anywhere – mobile, flexible, and reliable. From the innovative freshpolar® for optimal storage conditions of fresh products to the digital multipolar® sharing fridge with 24/7 self-catering for maximum transparency. Complemented by high-performance freezer models that keep food perfectly fresh and extend shelf life.

Whether in student housing, offices, meeting and conference rooms, staff catering or directly in the kitchen – Rieber delivers smart freshness exactly where it's needed.

# Refrigerators

Program Overview

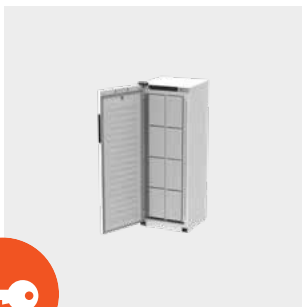


## freshpolar® Climate refrigerator with innovative hygiene filter technology

The freshpolar® is a professional climate refrigerator with innovative hygiene filter technology, an illuminated interior, and a glass door. The Cooling & Clima technology ensures an optimal storage climate for maximum shelf life, freshness, and hygiene of microgreens, herbs, and fresh products. With its GN 2/1 interior dimensions, it allows for space-efficient storage within the GN system, while the illuminated interior and glass door provide an appealing presentation.

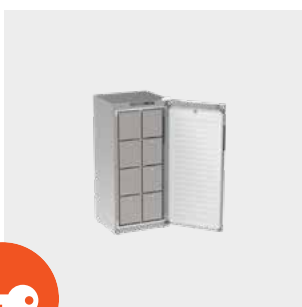


**The Cooling & Clima technology ensures an optimal storage climate for maximum shelf life, freshness, and hygiene of microgreens, herbs, and fresh products.**



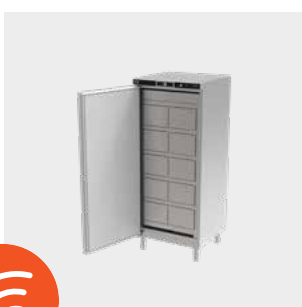
## multipolar® Community refrigerator with compartments

With 4 to 16 lockers, outer casing galvanised sheet steel, electrostatically powder-coated, in white, impact and shock-resistant / made of stainless steel. Inner bowl hygienic, fruit acid resistant polystyrene. Sturdy door hinges, all-round magnetic chamber seal, energy-saving & powerful refrigeration processor, low-noise & low-vibration. Energy consumption reduced by up to 16 times, significantly less cold loss due to opening of the individual compartments, the „refrigerator within the refrigerator“ saves electricity & money.



## multipolar® Community refrigerator with drawers

With 8 to 10 drawers, outer casing galvanised sheet steel, electrostatically powder-coated, in white, impact and shock-resistant / made of stainless steel. Inner bowl hygienic, fruit acid resistant polystyrene. Sturdy door hinges, all-round magnetic chamber seal, energy-saving & powerful refrigeration processor, low-noise & low-vibration.



## multipolar® CONNECT Digital community refrigerator with app based opening system

With digital lockers, hygienic & easy cleaning, compartments made of removable GN containers. Stainless steel outer casing. Inner bowl fruit acid resistant polystyrene. Sturdy door hinges, all-round magnetic chamber seal, door hinges left/right. Energy-saving & powerful cooling processor, low-noise & low-vibration. Energy consumption reduced by up to 16 times, significantly less cold loss due to opening of the individual compartments, the „refrigerator within the refrigerator“ saves electricity & money.



**Simple digital opening system via the Rieber CONNECT app, 24/7 & contactless opening. Energy consumption reduced by up to 16 times, as only individual compartments**

# Digital HACCP documentation - safe & time-saving

Digital documentation with the CHECK HACCP system. Automatic room temperature recording, via retrofittable sensor. Paper & complete HACCP & early warning of failure, viewable in real time from anywhere in your dashboard.



Automatic room temp. sensor - can be retrofitted any time - order no. 94020149



## Polar & multipolar® freezer with static cooling

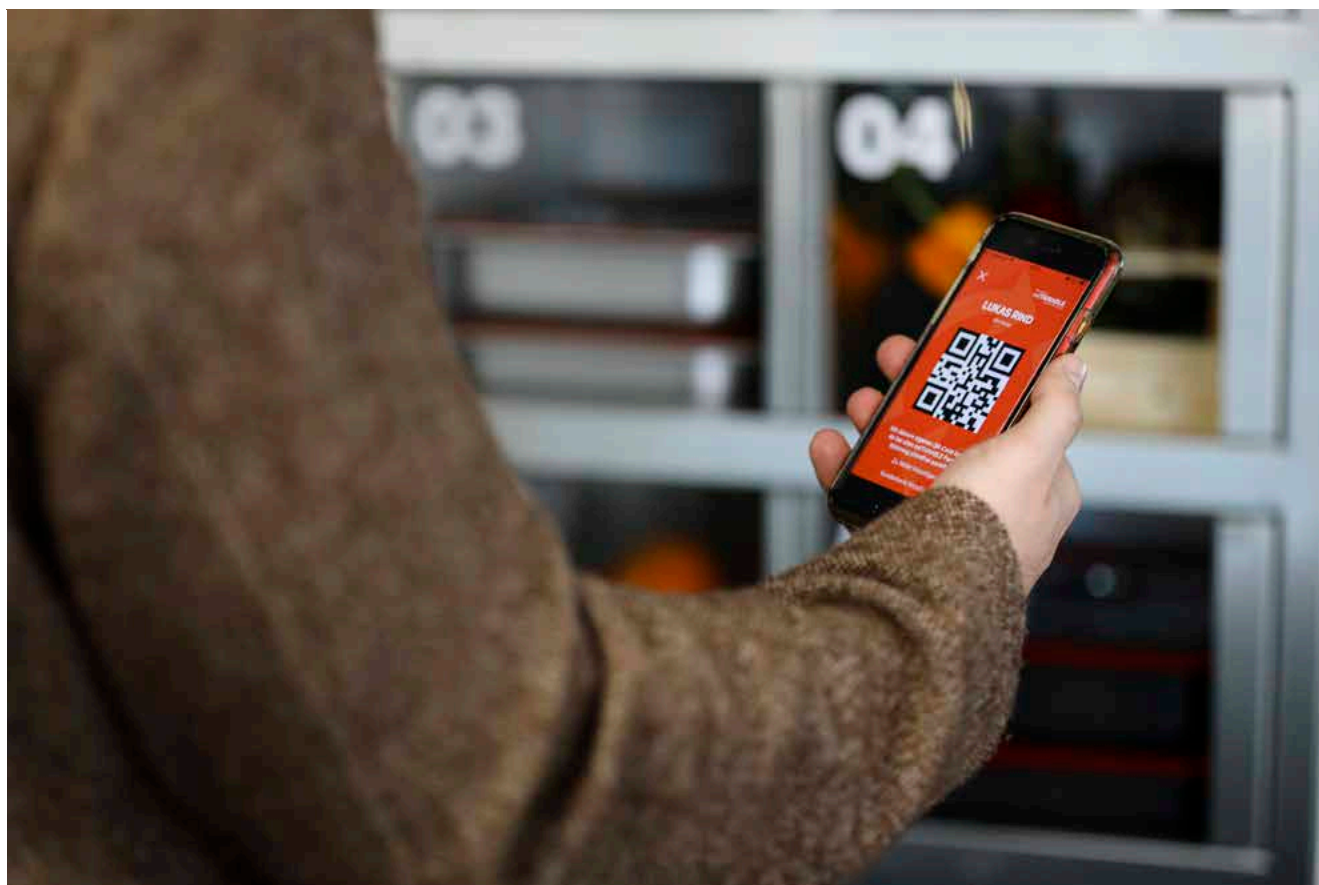
Outer casing galvanised sheet steel, impact/shock resistant powder-coated in white /made of stainless steel. Seamless inner chamber, white plastic with 7 evaporator plates & grid baskets. Lockable door, all-round magnetic chamber seal. Door hinge left/right. Climate class SN-ST.



## TK multipolar® CONNECT Digital Deep Freezing Community Refrigerator with app opening system

With 10 digital lockers, hygienic & easy cleaning. Compartment shelves made of removable GN containers. White steel outer casing. Inner bowl plastic white. Sturdy door hinges, all-round magnetic chamber seal, door hinges left/right. Particularly energy-saving due to adapted compressors and refrigerant R290. Energy consumption reduced by up to 16 times, significantly less cold loss due to opening of the individual compartments, the „refrigerator within the refrigerator“ saves electricity & money.

**+** Simple digital opening system via the Rieber CONNECT app, 24/7 & contactless opening. Energy consumption reduced by up to 16 times, as only individual compartments





# freshpolar®

## Climate refrigerator with innovative hygiene filter technology

The freshpolar® is a professional climate refrigerator with innovative hygiene filter technology, an illuminated interior, and a glass door. The Cooling & Clima technology ensures an optimal storage climate for maximum shelf life, freshness, and hygiene of microgreens, herbs, and fresh products. With its GN 2/1 interior dimensions, it allows for space-efficient storage within the GN system, while the illuminated interior and glass door provide an appealing presentation.



More info



### freshpolar®

Rated voltage: 1N AC 230 V 50/60 Hz | Cooling range: +1°C to +15°C | dynamic cooling | Refrigerant: R290 | Plug type: Schuko plug (Typ A) | Cable type: plain cable | Cable length: 3000 mm | Cleaning with a damp cloth | Ambient temperature: +10°C to +40°C | Energy efficiency class: B | Gross volume: 625 L | Net volume: 486 L | Including 3 x GN 2/1 wire racks

Dimensions	Connected load	Energy consumption	Door hinge	Order no.
mm	kW	kWh per year		
697 x 860 x 2110	0,920	412	right	<a href="#">83020705</a>



# multipolar® Community refrigerator with compartments

With 4 to 16 lockers, outer casing galvanised sheet steel, electrostatically powder-coated, in white, impact and shock-resistant / made of stainless steel. Inner bowl hygienic, fruit acid resistant polystyrene. Sturdy door hinges, all-round magnetic chamber seal, energy-saving & powerful refrigeration processor, low-noise & low-vibration. Energy consumption reduced by up to 16 times, significantly less cold loss due to opening of the individual compartments, the „refrigerator within the refrigerator“ saves electricity & money.



More info



## multipolar® 182 - 4-comp.

Rated voltage: 1N AC 230 V 50/60 Hz | Cooling range: +2°C to +10°C | static cooling | Refrigerant: R600a | Plug type: Schuko plug (Typ A) | Cable type: plain cable | Cable length: 2000 mm | Cleaning with a damp cloth | Ambient temperature: +10°C to +32°C | Energy efficiency class: B | Gross volume: 175 L | Net volume: 136 L

Dimensions	Connected load	Energy consumption	Door hinge	Order no.
mm	kW	kWh per year		
600 x 600 x 850	0,240	204	left	<a href="#">83020101</a>
600 x 600 x 850	0,240	204	right	<a href="#">83020102</a>



## multipolar® 182 - 6-comp.

Rated voltage: 1N AC 230 V 50/60 Hz | Cooling range: +2°C to +10°C | static cooling | Refrigerant: R600a | Plug type: Schuko plug (Typ A) | Cable type: plain cable | Cable length: 2000 mm | Cleaning with a damp cloth | Ambient temperature: +10°C to +32°C | Energy efficiency class: B | Gross volume: 175 L | Net volume: 136 L

Dimensions	Connected load	Energy consumption	Door hinge	Order no.
mm	kW	kWh per year		
600 x 600 x 850	0,240	204	left	<a href="#">83020103</a>
600 x 600 x 850	0,240	204	right	<a href="#">83020104</a>



## multipolar® 380 - 8-comp.

Rated voltage: 1N AC 230 V 50/60 Hz | Cooling range: +2°C to +9°C | dynamic cooling | Refrigerant: R600a | Plug type: Schuko plug (Typ A) | Cable type: plain cable | Cable length: 2000 mm | Cleaning with a damp cloth | Ambient temperature: +10°C to +40°C | Energy efficiency class: C | Gross volume: 327 L | Net volume: 221 L

Dimensions	Connected load	Energy consumption	Door hinge	Order no.
mm	kW	kWh per year		
597 x 654 x 1684	0,480	367	left	<a href="#">83020201</a>
597 x 654 x 1684	0,480	367	right	<a href="#">83020202</a>





### **multipolar® 481 - 8-comp.**

Rated voltage: 1N AC 230 V 50/60 Hz | Cooling range: +2°C to +9°C | dynamic cooling | Refrigerant: R600a | Plug type: Schuko plug (Typ A) | Cable type: plain cable | Cable length: 2000 mm | Cleaning with a damp cloth | Ambient temperature: +10°C to +40°C | Energy efficiency class: B | Gross volume: 544 L | Net volume: 431 L

Dimensions	Connected load	Energy consumption	Door hinge	Order no.
mm	kW	kWh per year		
747 x 769 x 1684	0,480	383	left	<a href="#">83020301</a>
747 x 769 x 1684	0,480	383	right	<a href="#">83020302</a>



### **multipolar® 380 - 10-comp.**

Rated voltage: 1N AC 230 V 50/60 Hz | Cooling range: +2°C to +9°C | dynamic cooling | Refrigerant: R600a | Plug type: Schuko plug (Typ A) | Cable type: plain cable | Cable length: 2000 mm | Cleaning with a damp cloth | Ambient temperature: +10°C to +40°C | Energy efficiency class: C | Gross volume: 327 L | Net volume: 230 L

Dimensions	Connected load	Energy consumption	Door hinge	Order no.
mm	kW	kWh per year		
597 x 654 x 1684	0,480	367	left	<a href="#">83020203</a>
597 x 654 x 1684	0,480	367	right	<a href="#">83020204</a>



### **multipolar® 481 - 10-comp.**

Rated voltage: 1N AC 230 V 50/60 Hz | Cooling range: +2°C to +9°C | dynamic cooling | Refrigerant: R600a | Plug type: Schuko plug (Typ A) | Cable type: plain cable | Cable length: 2000 mm | Cleaning with a damp cloth | Ambient temperature: +10°C to +40°C | Energy efficiency class: B | Gross volume: 544 L | Net volume: 431 L

Dimensions	Connected load	Energy consumption	Door hinge	Order no.
mm	kW	kWh per year		
747 x 769 x 1684	0,480	383	left	<a href="#">83020303</a>
747 x 769 x 1684	0,480	383	right	<a href="#">83020304</a>



### **multipolar® 380 - 12-comp.**

Rated voltage: 1N AC 230 V 50/60 Hz | Cooling range: +2°C to +9°C | dynamic cooling | Refrigerant: R600a | Plug type: Schuko plug (Typ A) | Cable type: plain cable | Cable length: 2000 mm | Cleaning with a damp cloth | Ambient temperature: +10°C to +40°C | Energy efficiency class: C | Gross volume: 327 L | Net volume: 234 L

Dimensions	Connected load	Energy consumption	Door hinge	Order no.
mm	kW	kWh per year		
597 x 654 x 1684	0,480	367	left	<a href="#">83020205</a>
597 x 654 x 1684	0,480	367	right	<a href="#">83020206</a>

### multipolar® 481 - 12-comp.

Rated voltage: 1N AC 230 V 50/60 Hz | Cooling range: +2°C to +9°C | dynamic cooling | Refrigerant: R600a | Plug type: Schuko plug (Typ A) | Cable type: plain cable | Cable length: 2000 mm | Cleaning with a damp cloth | Ambient temperature: +10°C to +40°C | Energy efficiency class: B | Gross volume: 544 L | Net volume: 431 L



Dimensions	Connected load	Energy consumption	Door hinge	Order no.
mm	kW	kWh per year		
747 x 769 x 1684	0,480	383	left	<a href="#">83020305</a>
747 x 769 x 1684	0,480	383	right	<a href="#">83020306</a>

### multipolar® 380 - 14-comp.

Rated voltage: 1N AC 230 V 50/60 Hz | Cooling range: +2°C to +9°C | dynamic cooling | Refrigerant: R600a | Plug type: Schuko plug (Typ A) | Cable type: plain cable | Cable length: 2000 mm | Cleaning with a damp cloth | Ambient temperature: +10°C to +40°C | Energy efficiency class: C | Gross volume: 327 L | Net volume: 229 L



Dimensions	Connected load	Energy consumption	Door hinge	Order no.
mm	kW	kWh per year		
597 x 654 x 1684	0,480	367	left	<a href="#">83020207</a>
597 x 654 x 1684	0,480	367	right	<a href="#">83020208</a>

### multipolar® 481 - 16-comp.

Rated voltage: 1N AC 230 V 50/60 Hz | Cooling range: +2°C to +9°C | dynamic cooling | Refrigerant: R600a | Plug type: Schuko plug (Typ A) | Cable type: plain cable | Cable length: 2000 mm | Cleaning with a damp cloth | Ambient temperature: +10°C to +40°C | Energy efficiency class: B | Gross volume: 544 L | Net volume: 431 L



Dimensions	Connected load	Energy consumption	Door hinge	Order no.
mm	kW	kWh per year		
747 x 769 x 1684	0,480	383	left	<a href="#">83020316</a>
747 x 769 x 1684	0,480	383	right	<a href="#">83020317</a>



# multipolar® Community refrigerator with drawers

With 8 to 10 drawers, outer casing galvanised sheet steel, electrostatically powder-coated, in white, impact and shock-resistant / made of stainless steel. Inner bowl hygienic, fruit acid resistant polystyrene. Sturdy door hinges, all-round magnetic chamber seal, energy-saving & powerful refrigeration processor, low-noise & low-vibration.



More info



## multipolar® 481 - 8 drawers

Rated voltage: 1N AC 230 V 50/60 Hz | Cooling range: +2°C to +9°C | dynamic cooling | Refrigerant: R600a | Plug type: Schuko plug (Typ A) | Cable type: plain cable | Cable length: 2000 mm | Cleaning with a damp cloth | Ambient temperature: +10°C to +40°C | Energy efficiency class: B | Gross volume: 554 L | Net volume: 314 L

Dimensions	Connected load	Energy consumption	Door hinge	Order no.
mm	kW	kWh per year		
747 x 769 x 1684	0,480	383	right	<a href="#">83020308</a>

## multipolar® 481-8 Drawers S/S

Rated voltage: 1N AC 230 V 50/60 Hz | Cooling range: +2°C to +9°C | dynamic cooling | Refrigerant: R600a | Plug type: Schuko plug (Typ A) | Cable type: plain cable | Cable length: 2000 mm | Cleaning with a damp cloth | Ambient temperature: +10°C to +40°C | Energy efficiency class: B | Gross volume: 544 L | Net volume: 314 L

Dimensions	Connected load	Energy consumption	Door hinge	Order no.
mm	kW	kWh per year		
747 x 769 x 1684	0,480	383	left	<a href="#">83020430</a>
747 x 769 x 1684	0,480	388	right	<a href="#">83020428</a>



## multipolar® 481 - 10 drawers

Rated voltage: 1N AC 230 V 50/60 Hz | Cooling range: +2°C to +9°C | dynamic cooling | Refrigerant: R600a | Plug type: Schuko plug (Typ A) | Cable type: plain cable | Cable length: 2000 mm | Cleaning with a damp cloth | Ambient temperature: +10°C to +40°C | Energy efficiency class: B | Gross volume: 554 L | Net volume: 308 L

Dimensions	Connected load	Energy consumption	Door hinge	Order no.
mm	kW	kWh per year		
747 x 769 x 1684	0,480	383	left	<a href="#">83020309</a>
747 x 769 x 1684	0,480	383	right	<a href="#">83020310</a>



**multipolar® 481-10 Drawers S/S**

Rated voltage: 1N AC 230 V 50/60 Hz | Cooling range: +2°C to +9°C | dynamic cooling | Refrigerant: R600a | Plug type: Schuko plug (Typ A) | Cable type: plain cable | Cable length: 2000 mm | Cleaning with a damp cloth | Ambient temperature: +10°C to +40°C | Energy efficiency class: B | Gross volume: 554 L | Net volume: 308 L

Dimensions	Connected load	Energy consumption	Door hinge	Order no.
mm	kW	kWh per year		
747 x 769 x 1684	0,480	388	left	<a href="#">83020431</a>
747 x 769 x 1684	0,480	388	right	<a href="#">83020427</a>

**multipolar® 481-12 Drawers S/S**

Rated voltage: 1N AC 230 V 50/60 Hz | Cooling range: +2°C to +9°C | dynamic cooling | Refrigerant: R600a | Plug type: Schuko plug (Typ A) | Cable type: plain cable | Cable length: 2000 mm | Cleaning with a damp cloth | Ambient temperature: +10°C to +40°C | Energy efficiency class: B | Gross volume: 554 L | Net volume: 442 L

Dimensions	Connected load	Energy consumption	Door hinge	Order no.
mm	kW	kWh per year		
747 x 769 x 1684	0,480	388	left	<a href="#">83020432</a>
747 x 769 x 1684	0,480	388	right	<a href="#">83020426</a>



# multipolar® CONNECT Digital community refrigerator with app based opening system

With digital lockers, hygienic & easy cleaning, compartments made of removable GN containers. Stainless steel outer casing. Inner bowl fruit acid resistant polystyrene. Sturdy door hinges, all-round magnetic chamber seal, door hinges left/right. Energy-saving & powerful cooling processor, low-noise & low-vibration. Energy consumption reduced by up to 16 times, significantly less cold loss due to opening of the individual compartments, the „refrigerator within the refrigerator“ saves electricity & money.



More info



## multipolar® CONNECT 10 Comp.

Rated voltage: 1N AC 230 V 50/60 Hz | Connected load: 0,46 kW | Cooling range: +2°C to +9°C | dynamic cooling | Refrigerant: R600a | Plug type: Schuko plug (Typ A) | Cable type: plain cable | Cable length: 2000 mm | Cleaning with a damp cloth | Ambient temperature: +10°C to +32°C | Energy efficiency class: B | Gross volume: 544 L | Net volume: 326 L

Dimensions	Connected load	Energy consumption	Door hinge	Order no.
mm	kW	kWh per year		
747 x 760 x 1814	0,460	388	right	<a href="#">83020701</a>
747 x 760 x 1814	0,460	388	left	<a href="#">83020702</a>



## multipolar® CONNECT 16 Comp.

Rated voltage: 1N AC 230 V 50/60 Hz | Connected load: 0,46 kW | Cooling range: +2°C to +9°C | dynamic cooling | Refrigerant: R600a | Plug type: Schuko plug (Typ A) | Cable type: plain cable | Cable length: 2000 mm | Cleaning with a damp cloth | Ambient temperature: +10°C to +32°C | Energy efficiency class: B | Gross volume: 544 L | Net volume: 304 L

Dimensions	Connected load	Energy consumption	Door hinge	Order no.
mm	kW	kWh per year		
747 x 760 x 1814	0,460	388	right	<a href="#">83020703</a>
747 x 760 x 1814	0,460	388	left	<a href="#">83020704</a>



## multipolar®CONNECT 10 comp.-Acryl door

Rated voltage: 1N AC 230 V 50/60 Hz | Connected load: 0,46 kW | Cooling range: +2°C to +9°C | dynamic cooling | Refrigerant: R600a | Plug type: Schuko plug (Typ A) | Cable type: plain cable | Cable length: 2000 mm | Cleaning with a damp cloth | Ambient temperature: +10°C to +32°C | Energy efficiency class: B | Gross volume: 544 L | Net volume: 326 L

Dimensions	Connected load	Energy consumption	Door hinge	Order no.
mm	kW	kWh per year		
747 x 760 x 1814	0,460	388	right	<a href="#">83020706</a>
747 x 760 x 1814	0,480	388	left	<a href="#">83020707</a>

**multipolar®CONNECT 16 comp.-Acryldoor**

Rated voltage: 1N AC 230 V 50/60 Hz | Connected load: 0,46 kW | Cooling range: +2°C to +9°C | dynamic cooling | Refrigerant: R600a | Plug type: Schuko plug (Typ A) | Cable type: plain cable | Cable length: 2000 mm | Cleaning with a damp cloth | Ambient temperature: +10°C to +32°C | Energy efficiency class: B | Gross volume: 544 L | Net volume: 304 L



Dimensions	Connected load	Energy consumption	Door hinge	Order no.
mm	kW	kWh per year		
747 x 760 x 1814	0,460	388	right	<a href="#">83020708</a>
747 x 760 x 1814	0,480	388	left	<a href="#">83020709</a>



# Polar & multipolar® freezer with static cooling

Outer casing galvanised sheet steel, impact/shock resistant powder-coated in white /made of stainless steel. Seamless inner chamber, white plastic with 7 evaporator plates & grid baskets. Lockable door, all-round magnetic chamber seal. Door hinge left/right. Climate class SN-ST.



More info



## Freezer Polar

Rated voltage: 1N AC 230 V 50/60 Hz | static cooling | Cooling range: -9°C to -26°C | Refrigerant: R290 | Plug type: Safety switch (type F) | Cable type: plain cable | Cable length: 3000 mm | Cleaning with a damp cloth | Ambient temperature: +10°C to +40°C | Energy efficiency class: | Gross volume: 499 L | Net volume: 289 L

Dimensions	Connected load	Energy consumption	Door hinge	Order no.
mm	kW	kWh per year		
747 x 769 x 1818	0,480	1.233	left	<a href="#">83020419</a>
747 x 769 x 1818	0,480	1.233	right	<a href="#">83020416</a>

## Freezer Polar s/s

Rated voltage: 1N AC 230 V 50/60 Hz | static cooling | Cooling range: -9°C to -26°C | Refrigerant: R290 | Plug type: Safety switch (type F) | Cable type: plain cable | Cable length: 3000 mm | Cleaning with a damp cloth | Ambient temperature: +10°C to +40°C | Energy efficiency class: | Gross volume: 499 L | Net volume: 289 L

Dimensions	Connected load	Energy consumption	Door hinge	Order no.
mm	kW	kWh per year		
747 x 769 x 1818	0,480	1.233	left	<a href="#">83020417</a>
747 x 769 x 1818	0,480	1.233	right	<a href="#">83020414</a>





# TK multipolar® CONNECT Digital Deep Freezing Community Refrigerator with app opening system

With 10 digital lockers, hygienic & easy cleaning. Compartment shelves made of removable GN containers. White steel outer casing. Inner bowl plastic white. Sturdy door hinges, all-round magnetic chamber seal, door hinges left/right. Particularly energy-saving due to adapted compressors and refrigerant R290. Energy consumption reduced by up to 16 times, significantly less cold loss due to opening of the individual compartments, the „refrigerator within the refrigerator“ saves electricity & money.



More info

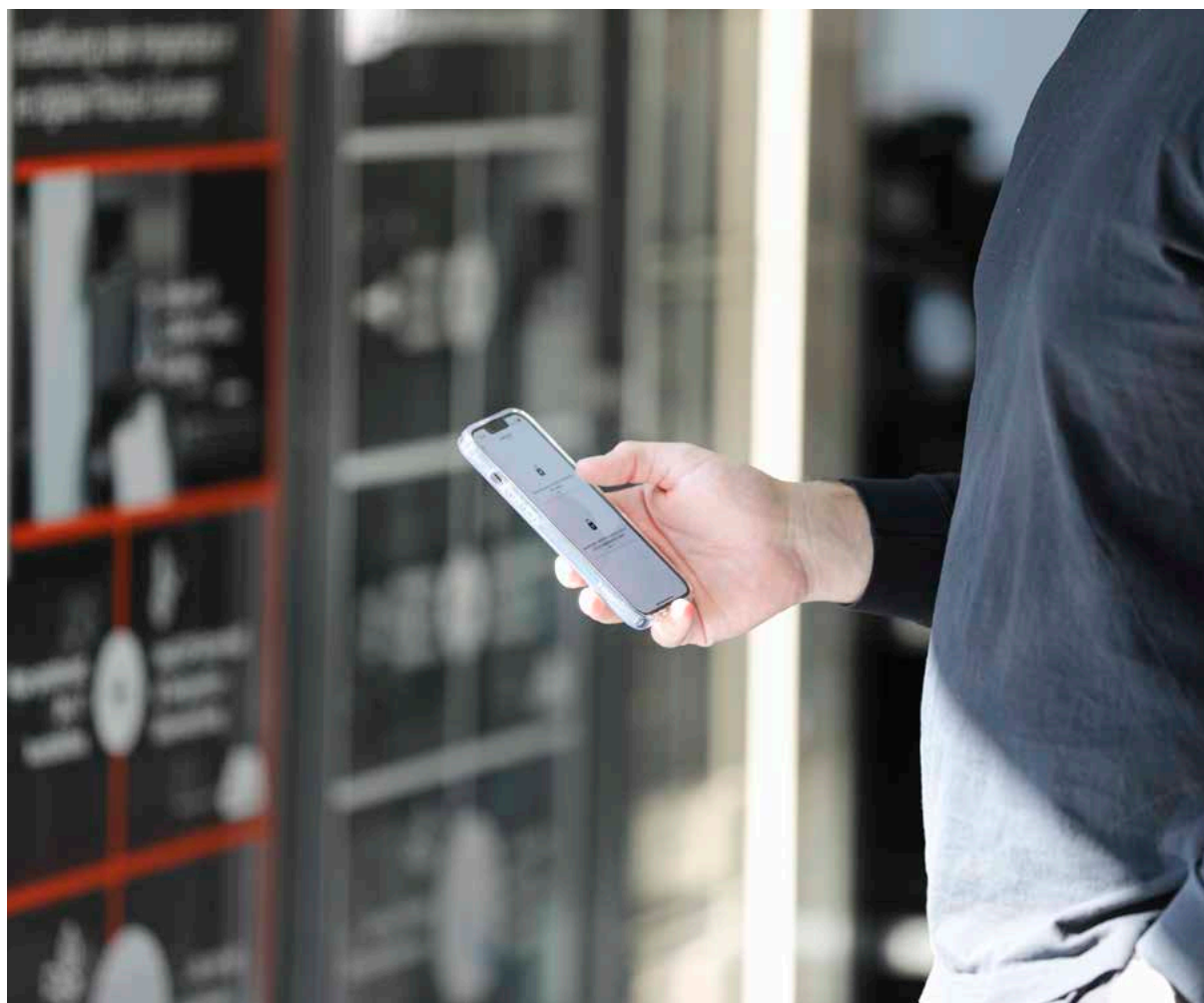


## tk multipolar® CONNECT

Rated voltage: 1N AC 230 V 50/60 Hz | | Cooling range: -14°C to -25°C | Refrigerant: R290 | Plug type: Safety switch (type F) | Cable type: plain cable | Cable length: 2000 mm | Ambient temperature: +10°C to +32°C | Gross volume: 620 L



Dimensions mm	Connected load kW	Energy consumption kWh per year	Door hinge	Order no.
820 x 793 x 1960	0,365	613	left	<a href="#">83020440</a>
820 x 793 x 1960	0,365	613	right	<a href="#">83020441</a>

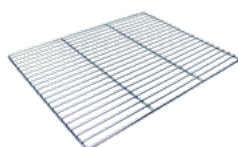


# Cooling accessories

Matching accessories for corresponding refrigerator models - such as the GN receptacle SET for the gastropolar® GN system refrigerator, GN stainless steel grids, to visually stylish glass door, for insight into the interior of the gastropolar®. For the multipolar® communal refrigerator, door decor frames to choose from, master key for secure locking, as well as robust stainless steel base frames.



More info



## Stainless steel grid GN 2/1 530x650mm

The GN grill - for insertion into cabinets / carts / compartments in Gastronorm dimensions made of stainless steel.

Weight	Order no.
kg	
2,1	<a href="#">84140101</a>

## Door frame mounted - multipolar® 182

Weight	Order no.
kg	
-	<a href="#">83020198</a>

## Base frame CNS H=350mm-multipolar® 380

Weight	Order no.
kg	
-	<a href="#">83020297</a>

## Base frame 182 CNS, height max. 350mm

Weight	Order no.
kg	
-	<a href="#">83020197</a>

## Base frame CNS H=350mm-multipolar® 481

Weight	Order no.
kg	
-	<a href="#">83020397</a>

## Master key for multipolar®21 (G)



Weight	Order no.
kg	
0,0	<a href="#">83020200</a>

